

New York State

COVID-19 UPDATE

July 20, 2022



MONKEYPOX UPDATE

CASES STATEWIDE

County	Cases
New York City	639
Westchester County	18
Suffolk County	5
Nassau County	5
Monroe County	4
Erie County	2
Sullivan County	1
Chemung County	1
Rockland County	1
St. Lawrence County	1
Tompkins County	1
Albany County	1
Statewide	679

*Cases as of July 19, 2022

VACCINE ALLOCATION

Phase	NYS Allocation	NYC Allocation
1	2,206	5,989
2A	5,398	14,652
2B	8,822 *We are giving 2,000 doses to NYC	23,963
Total to New York	61,030	

Visit:
health.ny.gov/monkeypox

Text "MONKEYPOX" to 81336 or
 "MONKEYPOXES" to 646-382-1111

MONKEYPOX UPDATE

NYS VACCINE ALLOCATION

Phase	NYS Allocation	Suffolk County	Nassau County	Westchester County	Saratoga County	Rockland County	Sullivan County	Erie County	Monroe County	Albany County	NYSDOH Reserve
1	2,206	750	400	450	300	40	40	-	-	-	226
2A	5,398	1,750	1,240	1,490	620	-	-	-	-	-	218
2B	8,822 *We are giving 2,000 doses to NYC	1,800	1,000	2,600	300 *100 of these doses come from NYSDOH 2A reserve	-	-	600	600	40	22

health.ny.gov/monkeypox

Text "MONKEYPOX" to 81336 or "MONKEYPOXESP" for Spanish

Dr. Ashish Jha
White House COVID-19
Response Coordinator



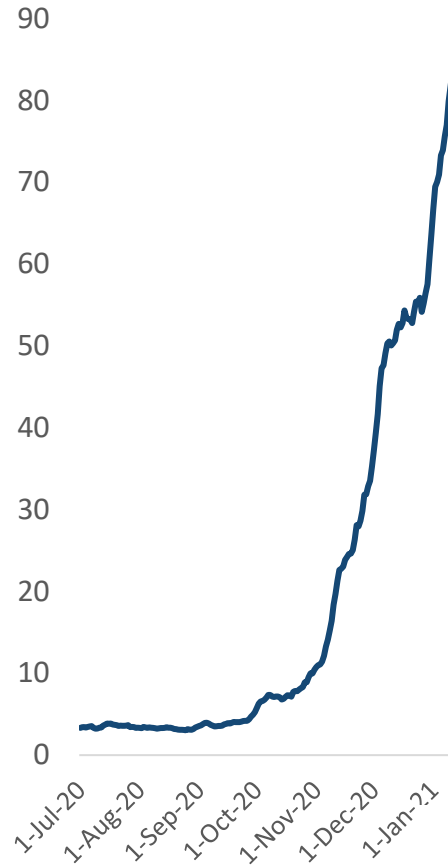
PREPARING FOR THE FUTURE

- ✓ Fall is a vulnerable time
- ✓ We are watching the numbers closely
- ✓ Boosting our Fall and Winter preparedness

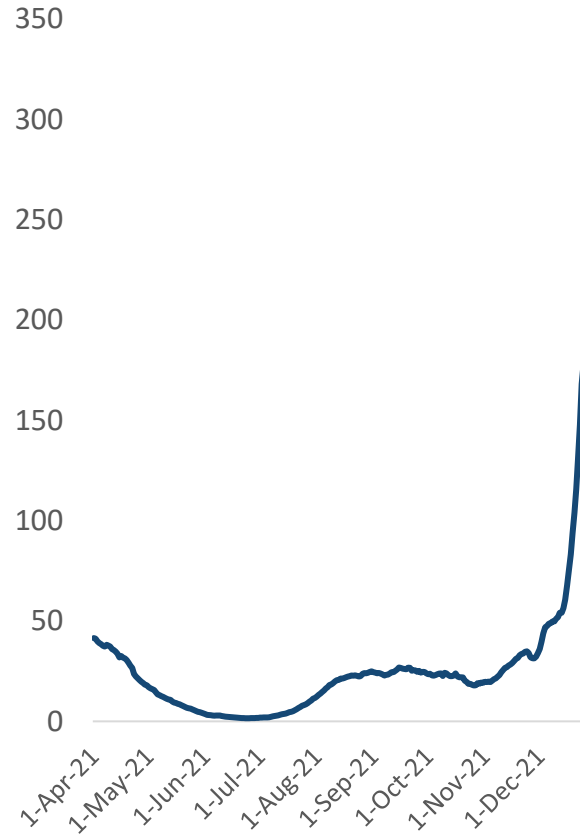
STATEWIDE CASES PER 100,000 – 7 DAY AVERAGE

July 19: 37.36

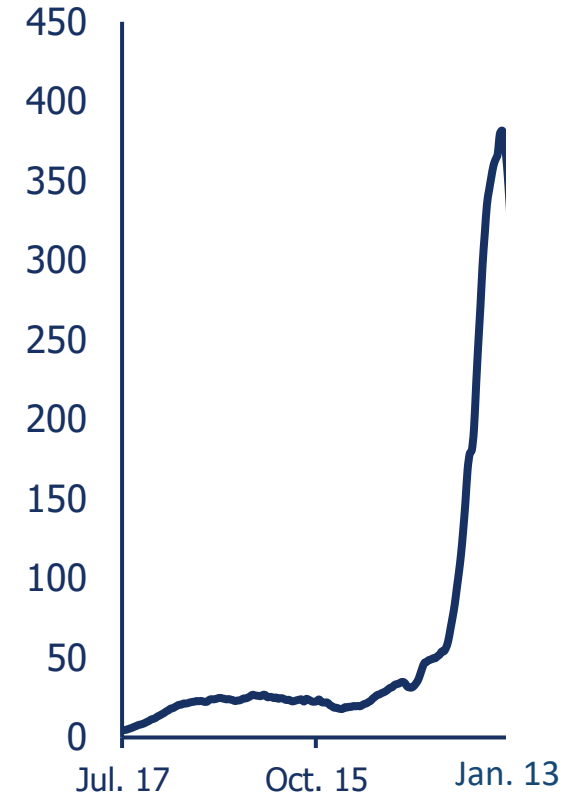
JULY 2020 – JAN. 2021



APRIL 2021 – DEC. 2021



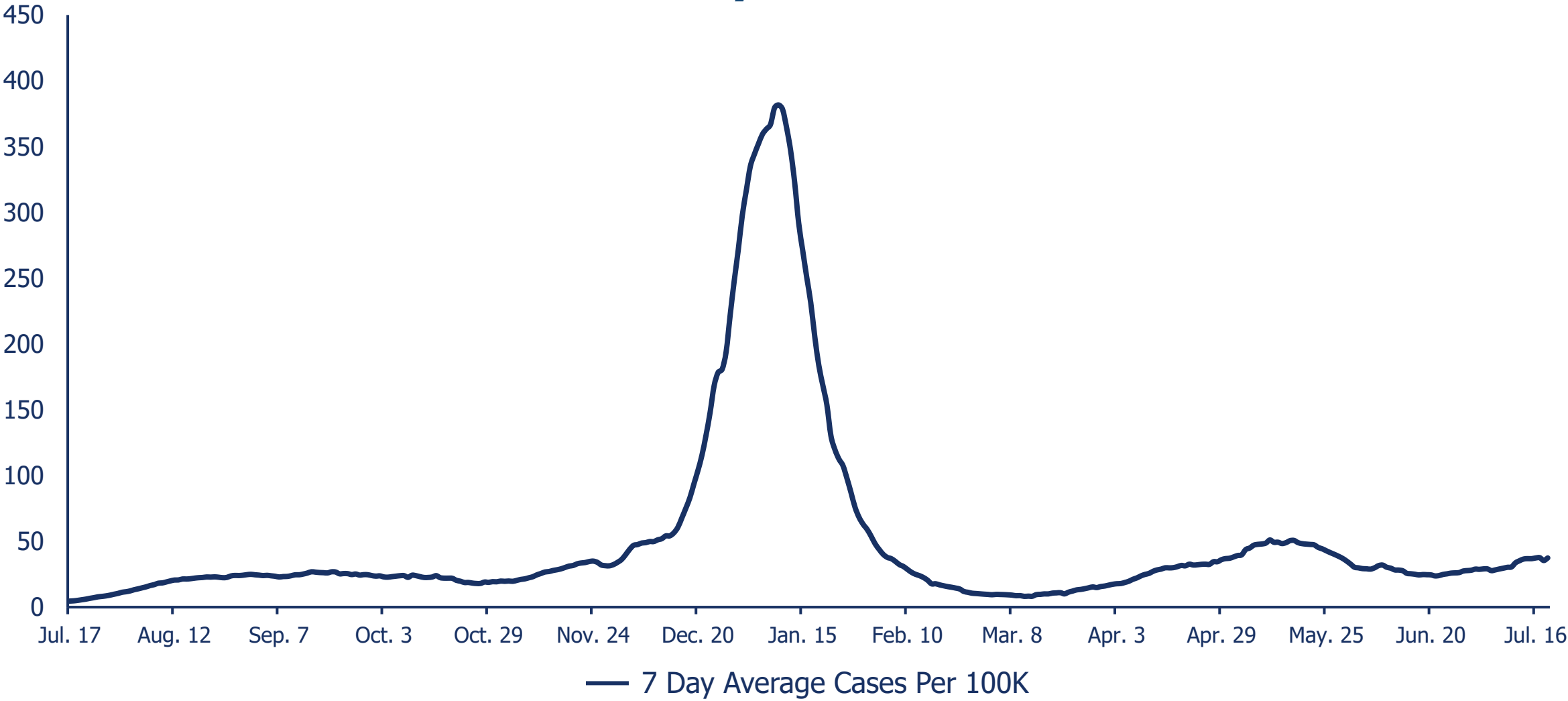
JULY 2021 – JAN. 2022



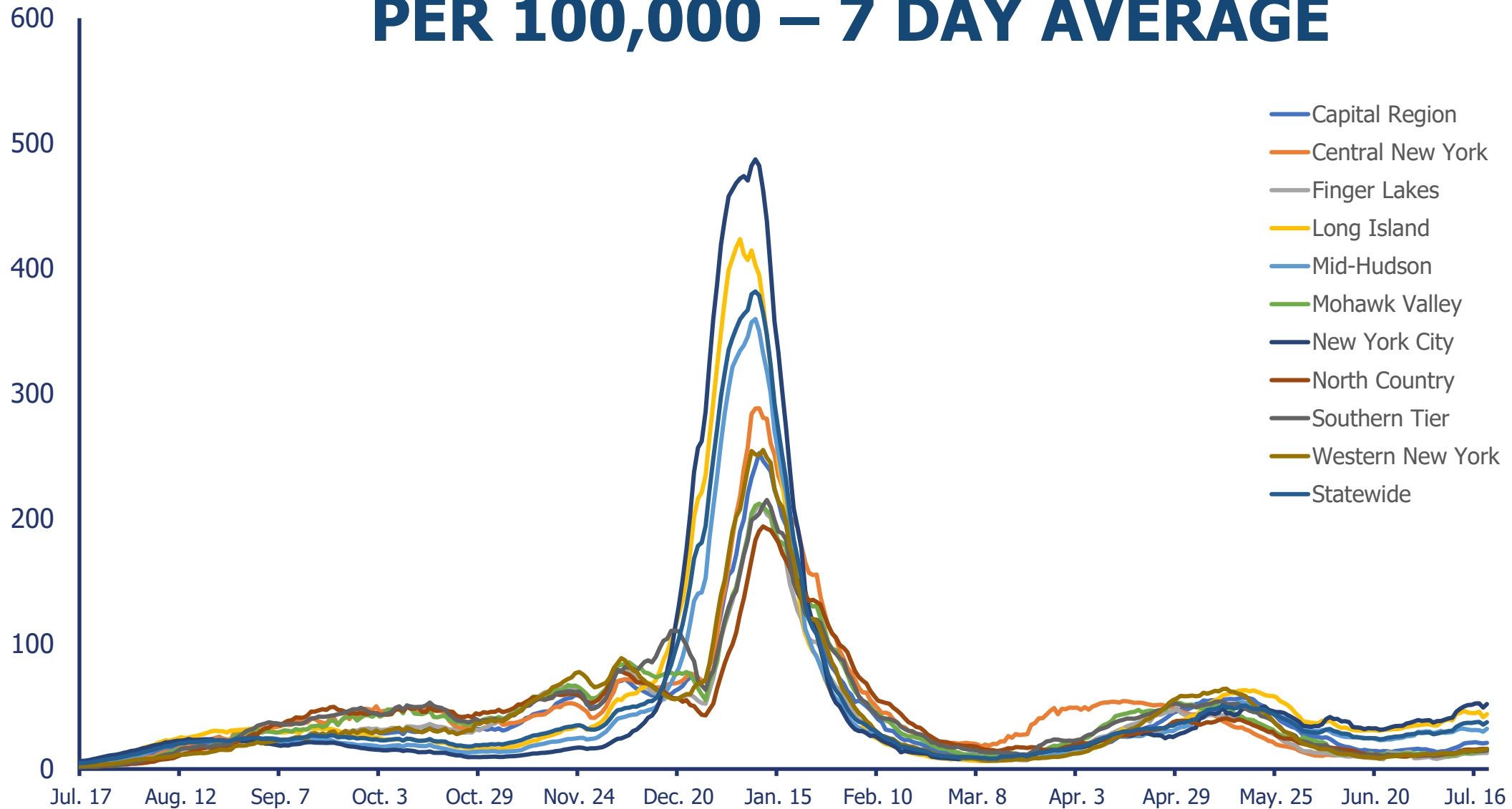
— 7 Day Average Cases Per 100K

STATEWIDE CASES PER 100,000 – 7 DAY AVERAGE

July 19: 37.36



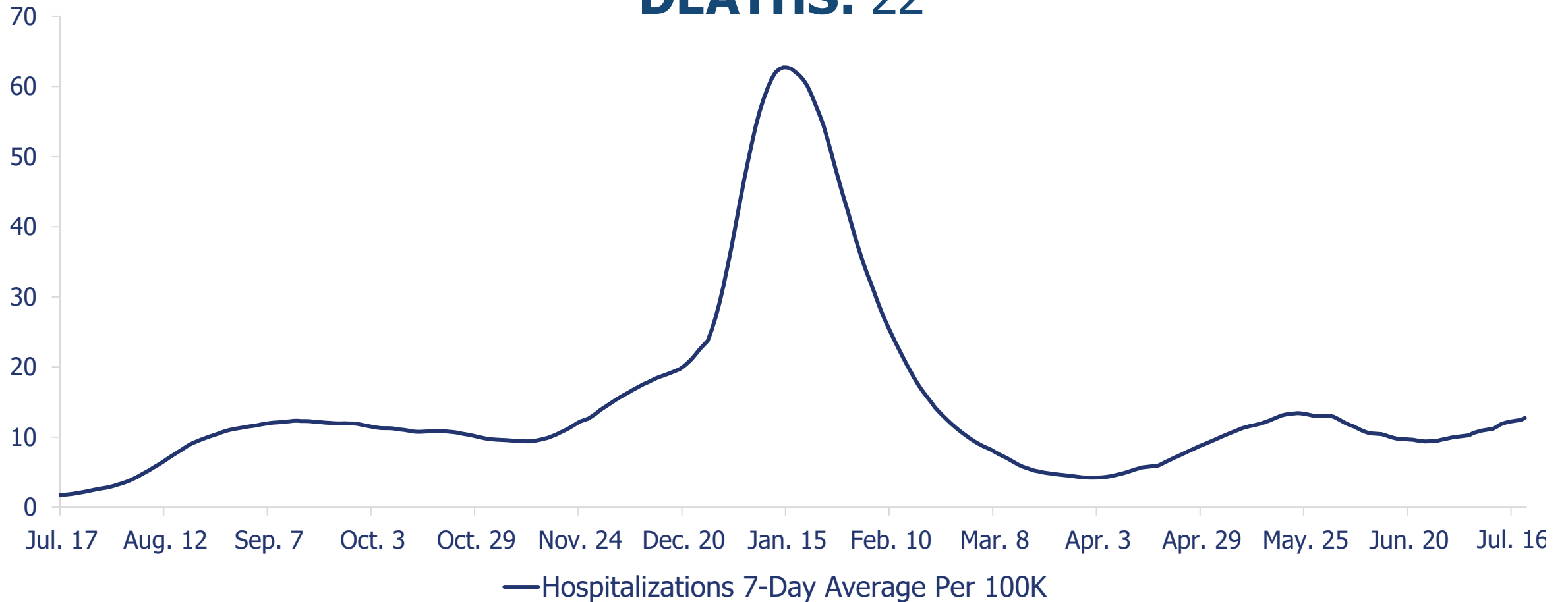
CASES BY REGION PER 100,000 – 7 DAY AVERAGE



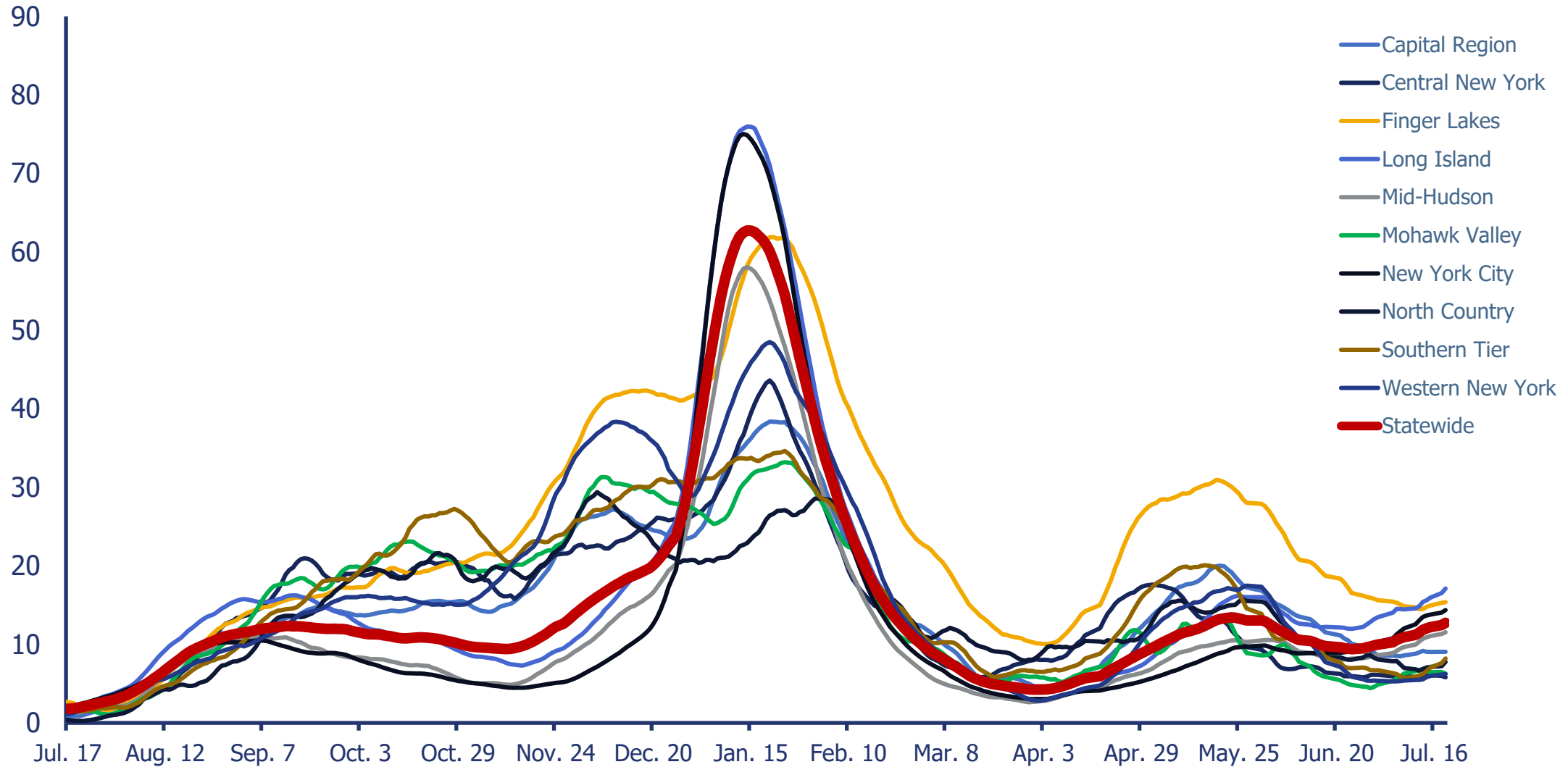
STATEWIDE HOSPITALIZATIONS PER 100K – 7 DAY AVERAGE:

12.74

DEATHS: 22

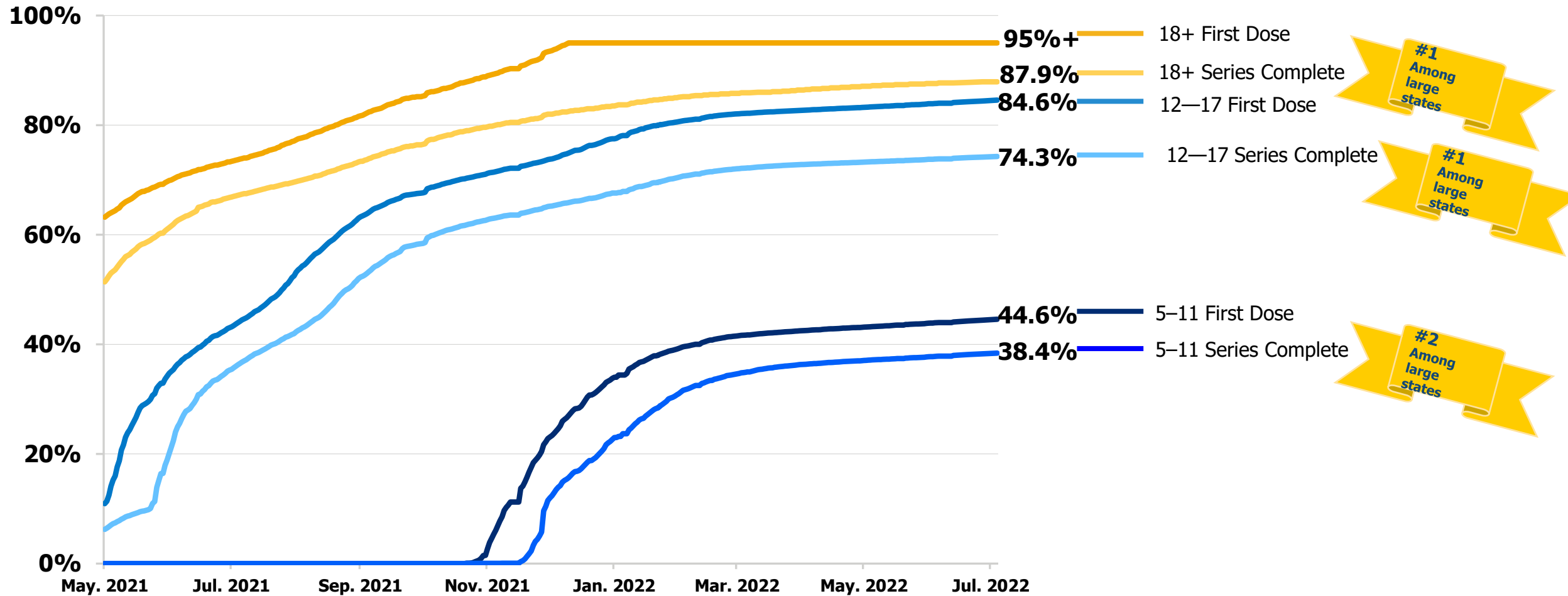


HOSPITALIZATIONS BY REGION PER 100,000 – 7 DAY AVERAGE



*Due to the holiday, HERDS data collection from health care facilities was paused from 4/15/2022-4/17/2022. Data from those days were submitted in Monday's report. Where noted, totals include four days of cumulative data from 4/15/2022-4/18/2022. As a result, some data may appear higher than recent trends.

VACCINATION PROGRESS



Note: CDC began reporting 12+ vaccination data on May 13, 2021. CDC changed vaccine data tracking guidance to cap vaccination rates at 95% on December 9, 2021.

Source: CDC Vaccination Data

BOOSTER UPDATE

Region	Additional Doses
Capital Region	579,548
Central New York	387,710
Finger Lakes	605,589
Long Island	1,386,073
Mid-Hudson	1,089,763
Mohawk Valley	201,905
New York City	3,578,901
North Country	182,365
Southern Tier	274,477
Western New York	643,258
Out of State	146,752
Statewide	9,076,341

+53.4% of eligible New Yorkers have received their first booster.

Who should get a COVID-19 vaccine booster?

AFTER COMPLETING YOUR PRIMARY VACCINE SERIES



Children & teens
ages 5 and older

1 Booster



Adults under 50

1 Booster



Adults ages 50
and older

2 Boosters



People ages 12 years
and older who have a
weakened immune system

2 Boosters



ny.gov/vaccine

FUTURE PREPARATIONS



FUTURE PREPARATIONS

Statewide Coordination & Governance

Ensure cohesive efforts within NYS government stakeholders & with external stakeholders

Disease Monitoring & Scenario Planning

Collect and analyze key data (incl. early warning metrics) understand progression, rapidly identify and respond to surges / enhance understanding of the disease (e.g., clinical impact) through research

Equity & Access

Ensure equity & access across elements of COVID Management, with focus on vulnerable populations

Behavioral & Industry Policy and Guidelines

Manage policy and guidelines & impose restrictions as needed leveraging the right legal mechanisms

Vaccination

Engage providers / partners, maintain broad access, encourage uptake

Testing

Ensure adequate testing access / availability, lab capacity and supplies

Therapeutics

Ensure access through allocation / distribution, develop public education to ensure demand

Healthcare Capacity Management

Ensure adequate hospital capacity and deployment of resources

PPE

Ensure PPE availability for critical workers & vulnerable populations

Contact Tracing

Identify disease clusters in vulnerable settings

Long COVID

Monitor and implement appropriate treatment for chronic long-term health outcomes

Public Communications

Coordinate external communication efforts to the general public for consistent messaging

Budget & Financing

Identify funding sources & ensure ongoing resources in place to support ongoing COVID response

FALL ACTION PLANNING UNDERWAY

Return to school strategy

Getting more New Yorkers vaccinated & boosted

Test early, test often

More access to treatment and therapeutics

Stockpile and ready to deploy personal protective equipment (PPE)

Strengthening our hospital systems

Coordinating with federal and local partners

Public Survey Findings

Future preparedness public survey findings (conducted mid-June):

- Most residents feel that things have gotten better compared to previous surges and currently feel safe about the state of COVID
 - 90% feel neutral to very safe (10% feel unsafe)
- Awareness of antivirals is high (70%), but few people know whether they are eligible and how to access them (only ~30%)
- ~80-90% of residents can easily access both at-home and PCR tests
- However, uninsured residents have a harder time accessing PCR tests, ~40% cannot easily access them
- Most people (75%) believe in the ability of vaccines to prevent transmission and severe illness

A group of children walking away from the camera, carrying backpacks and wearing hats, suggesting a school setting. The image is overlaid with a blue tint.

RETURN TO SCHOOL STRATEGY

**Sending tests to schools ahead of
school year start**

GETTING MORE NEW YORKERS VACCINATED & BOOSTED

- ✓ 99% of residents live within drivable distance to a vaccine provider
- ✓ We have a provider network with the capacity to boost all 65+ residents in 4 weeks



TEST EARLY, TEST OFTEN

- **During the Omicron emergency, procured more than 100 million test kits**
- **We have over 20 million at-home tests stockpiled and ready to distribute**

MORE ACCESS TO TREATMENT AND THERAPEUTICS

- ✓ 44 Active Test-to-Treat Sites
- ✓ Statewide COVID-19 Treatment Hotline

NYC residents: 212-COVID19

Rest of State: 888-TREAT-NY



STOCKPILE AND READY TO DEPLOY PERSONAL PROTECTIVE EQUIPMENT (PPE)

**We have more than 60 days
worth of PPE to address any
upcoming surge**

STRENGTHENING OUR HOSPITAL SYSTEMS

- ✓ Surge Operations Center remains active to help alleviate stress on hospitals



COORDINATING WITH FEDERAL AND LOCAL PARTNERS

**We will continue to coordinate
with federal and local partners**

FALL ACTION PLANNING UNDERWAY

Return to school strategy

Getting more New Yorkers vaccinated & boosted

Test early, test often

More access to treatment and therapeutics

Stockpile and ready to deploy personal protective equipment (PPE)

Strengthening our hospital systems

Coordinating with federal and local partners

FUTURE PREPARATIONS



Pandemic After-Action Review

- Most comprehensive review in the nation

The After-Action Review will:

- Review the State's COVID-19 response
- Identify strengths, best practices, and key lessons to improve public health preparedness and response
- Report the key findings, provide recommendations and prepare a planning guide for future emergencies
 - The Review will serve as a guide for New York State and for other governments to use in order to respond quickly and effectively to significant emergencies whether pandemics, natural disasters or other emergency conditions that create major disruptions to normal life

Pandemic After-Action Review

After-Action Review to cover the following areas:

- The transfer of individuals, particularly the most vulnerable, into congregate settings including homeless shelters, group homes, nursing homes, jails and prisons, and the efficacy of infection controls.
- Policies and guidance related to which medical procedures could and should continue at hospitals and in-patient facilities, in light of the pandemic's demands.
- The pandemic's impact on early childhood, school age, special education and post-secondary educational programs, including the shutdown and reopening of educational institutions, and how best to handle in a future emergency.

Pandemic After-Action Review

After-Action Review to cover the following areas:

- Factors for determining which businesses, industries and functions should be considered essential and for what purposes.
- The securing and procurement of essential goods and services to meet New Yorkers' needs.
- The protection needed for workers, both in the workplace and as a group.

Pandemic After-Action Review

After-Action Review to cover the following areas:

- Coordination among and between the State and its federal and local counterparts, including relationships with mayors, county leaders and other elected officials.
- Effective education and communication with the public, including the sharing of data and other information.
- Staffing and expertise needed to plan and implement emergency procedures and specific functions that must be fulfilled.

Pandemic After-Action Review

- The aim of the Review is to better inform New York State's pandemic response, and is not intended to conflict with other outside ongoing reviews.

Pandemic After-Action Review

- Review to be overseen by **Jackie Bray, Commissioner for the New York State Division of Homeland Security and Emergency Services**

FUTURE PREPARATIONS



