

New York State

COVID-19 UPDATE

February 27, 2022



“Priority Number One:

We get children back to school and protect the environment so they can learn, and everyone is safe.”

- Governor Hochul, Swearing-In Remarks, August 24, 2021

WINTER SURGE ACTIONS TO KEEP KIDS SAFE & IN SCHOOL

MONITOR THE METRICS

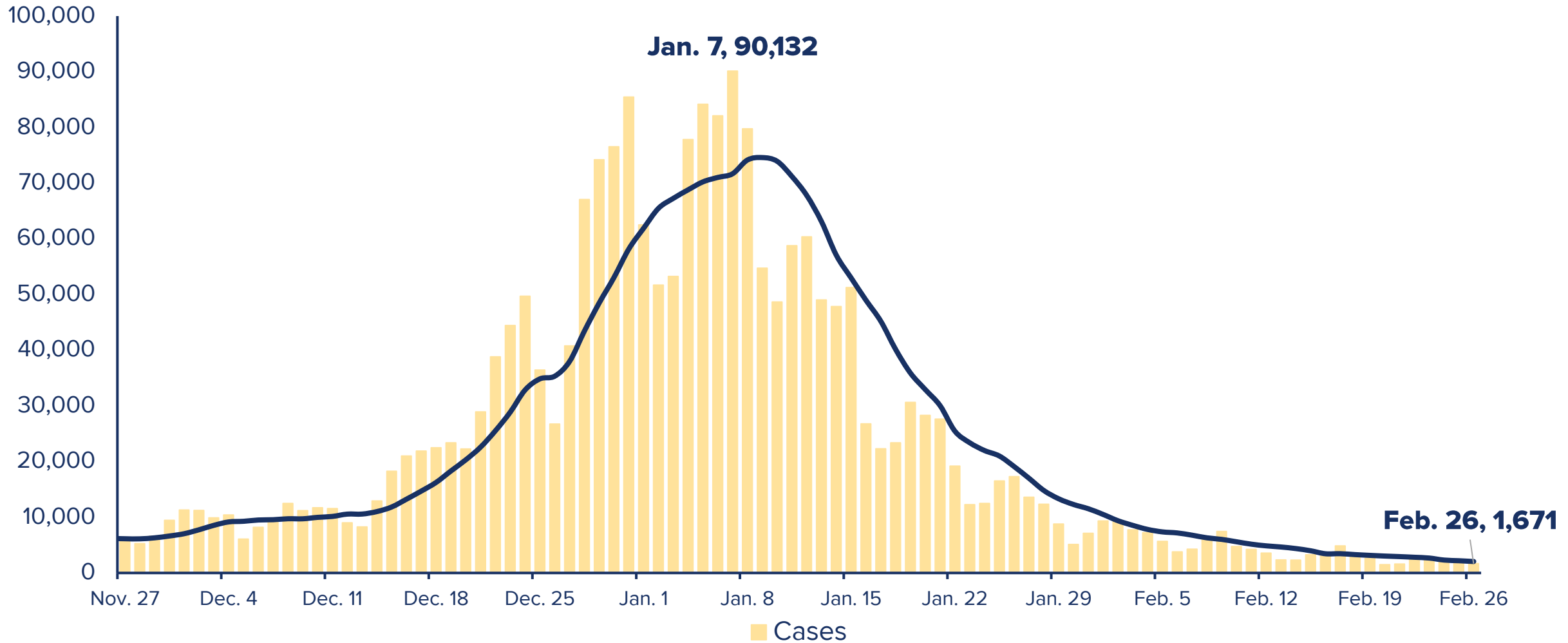
**DISTRIBUTE TESTS TO
SCHOOLS & STUDENTS**

**CONSULT EXPERTS &
SCHOOLS LEADERS**

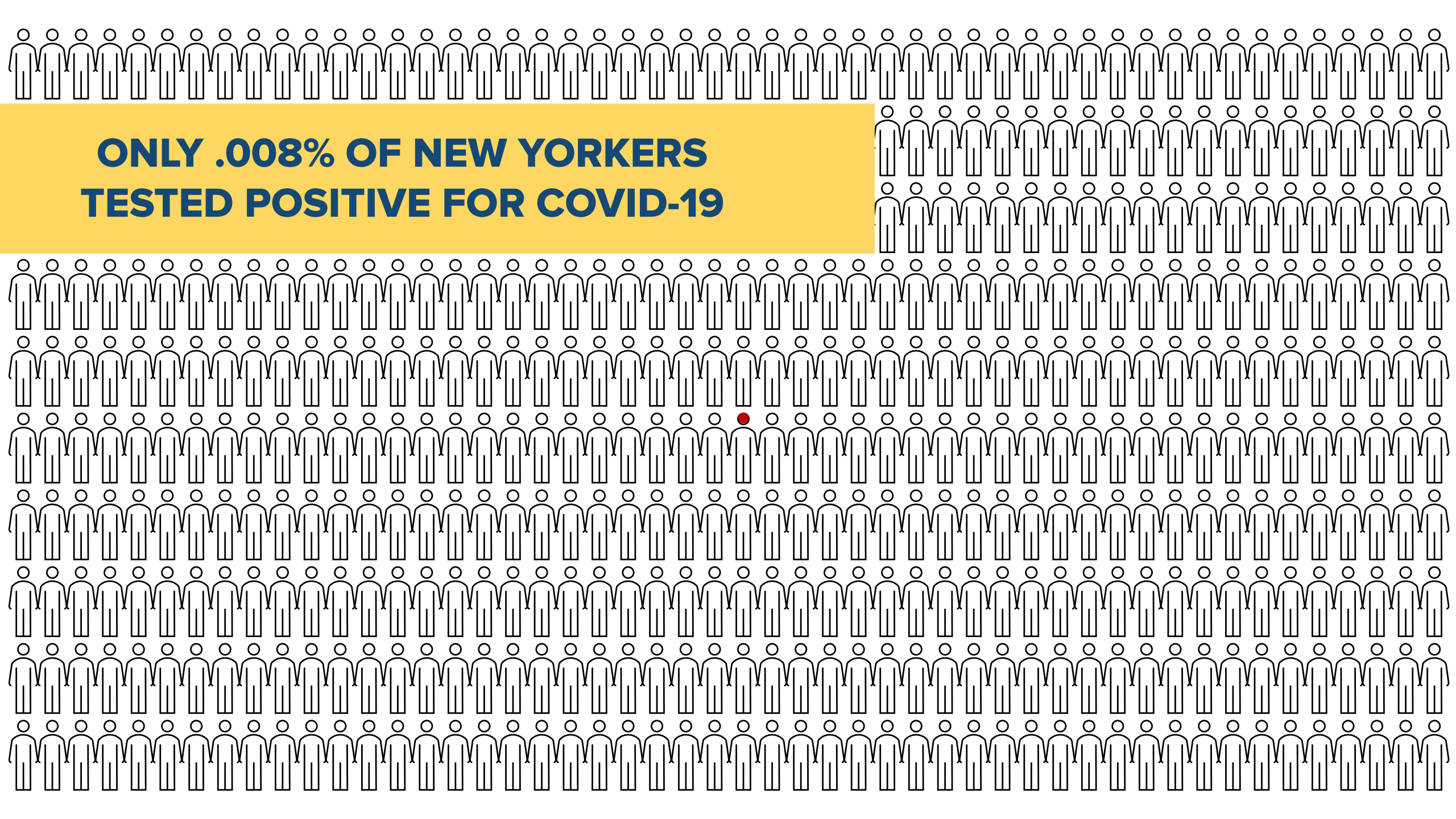


7 DAY AVERAGE CASES ARE AT PRE-SURGE LEVELS

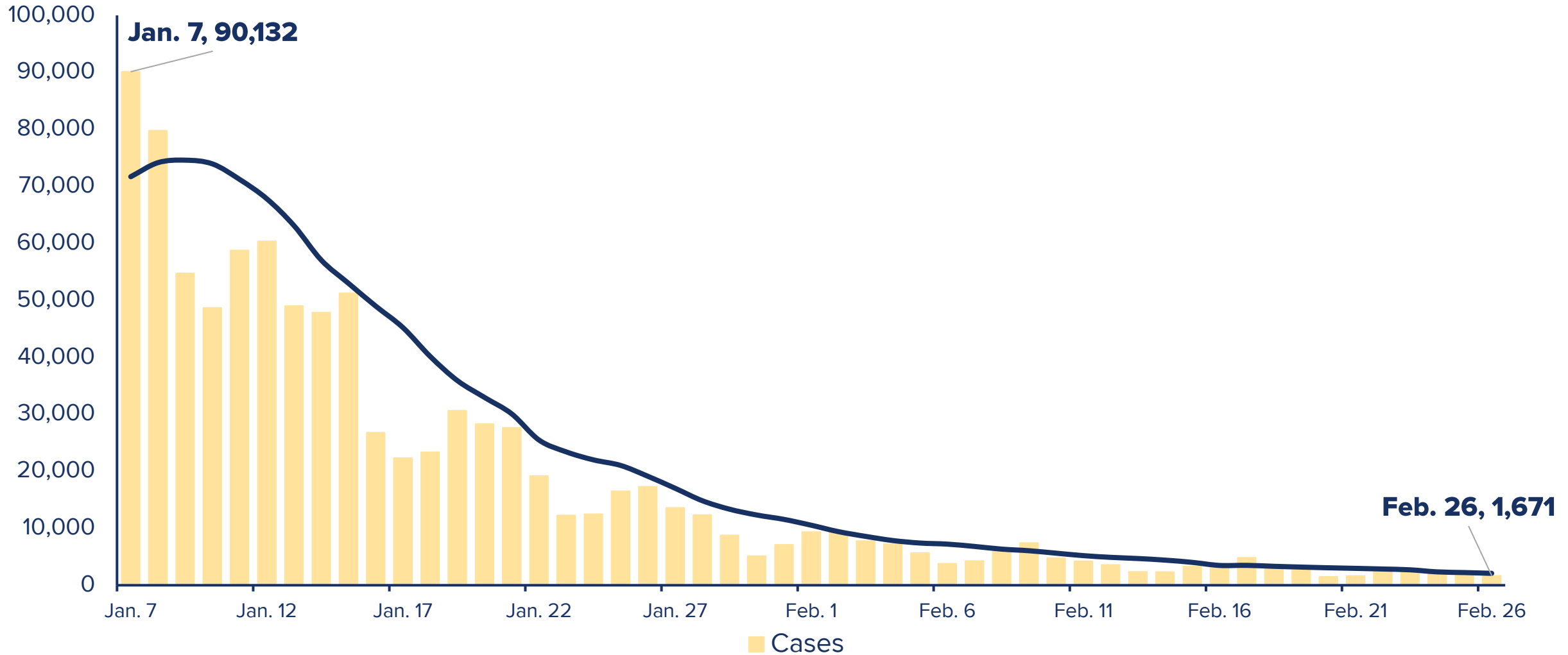
New Cases: 1,671



**ONLY .008% OF NEW YORKERS
TESTED POSITIVE FOR COVID-19**

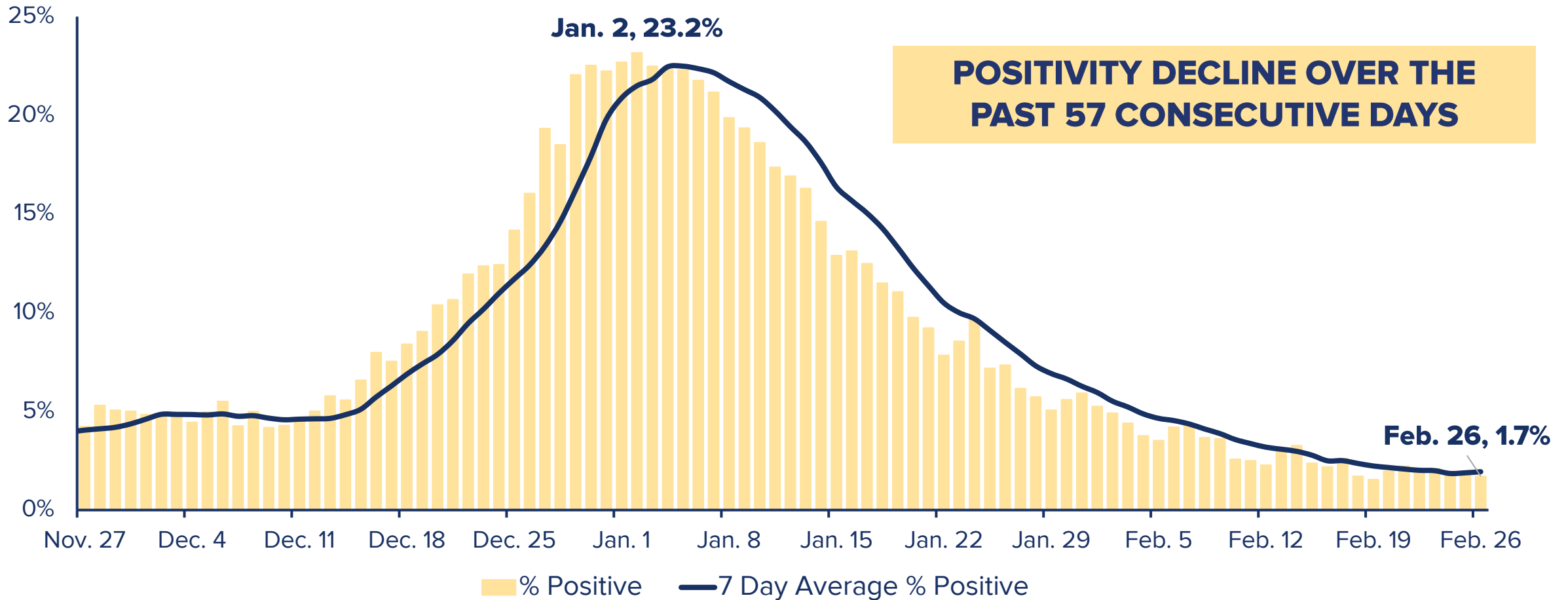


CONTINUOUS DOWNWARD TREND OVER THE PAST 51 DAYS



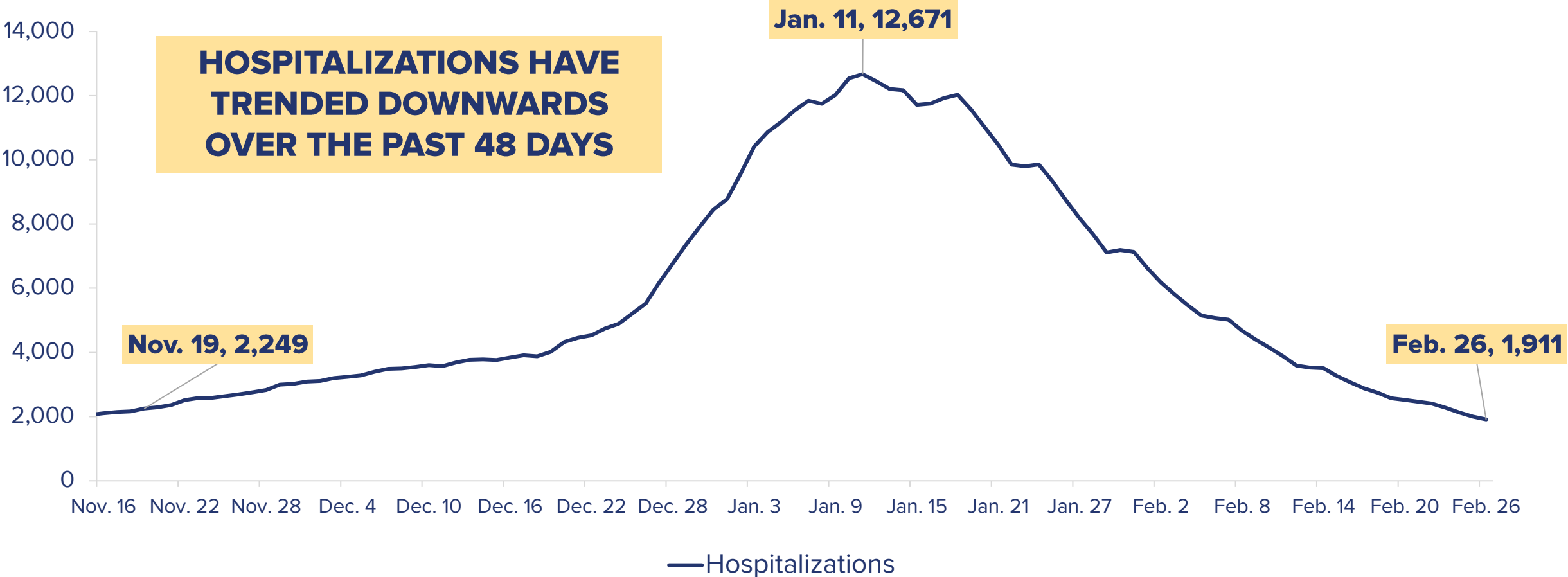
7 DAY AVERAGE % POSITIVITY IS GOING DOWN

February 26 Percent Positive: 1.7%

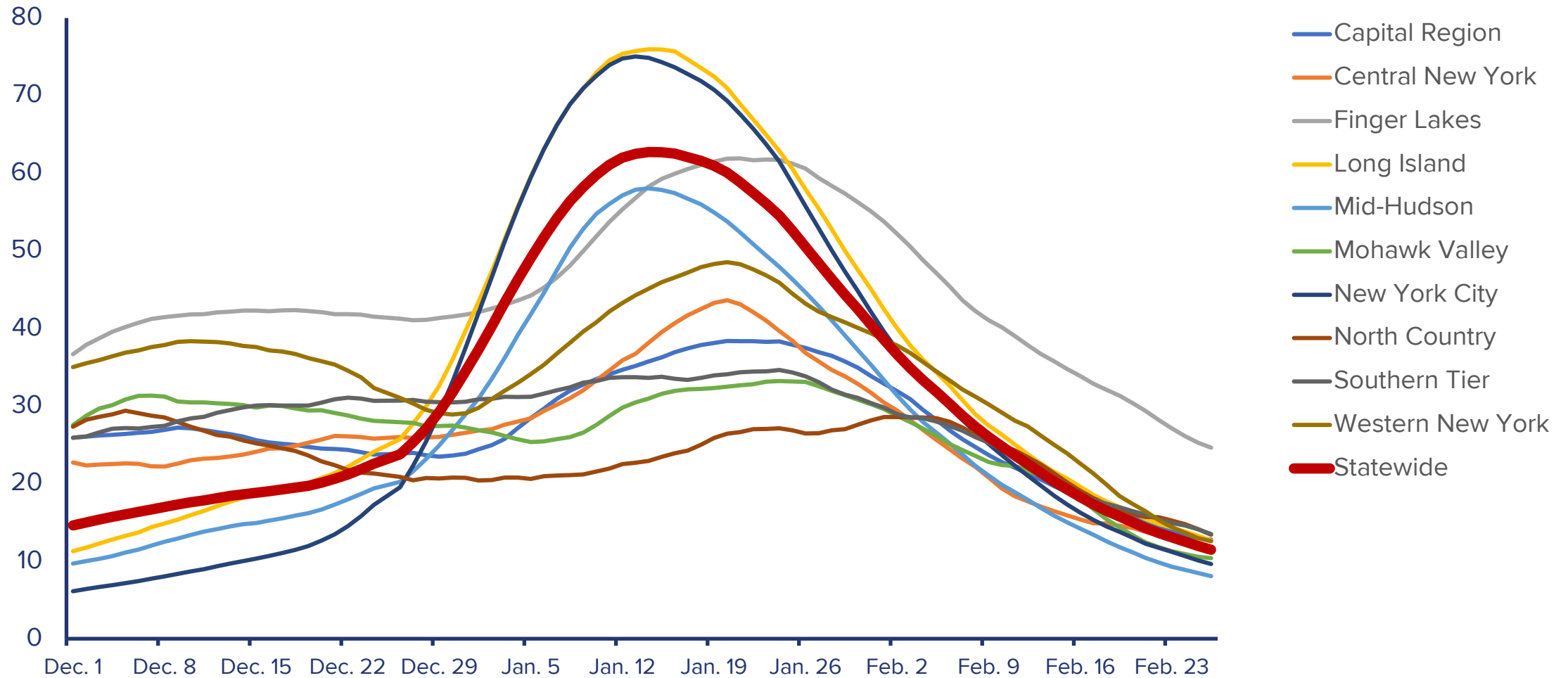


COVID-19 HOSPITALIZATIONS: 1,911

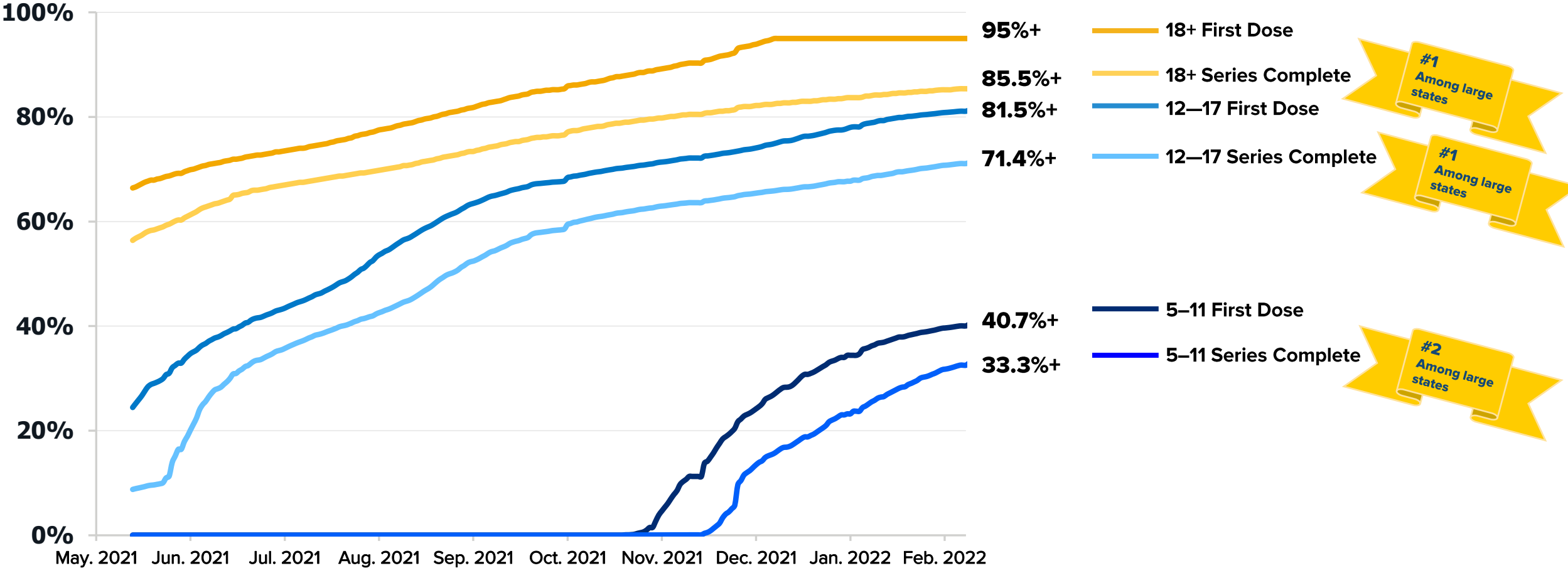
DEATHS: 20



COVID-19 HOSPITALIZATIONS PER 100,000 BY REGION, 7-DAY AVERAGE

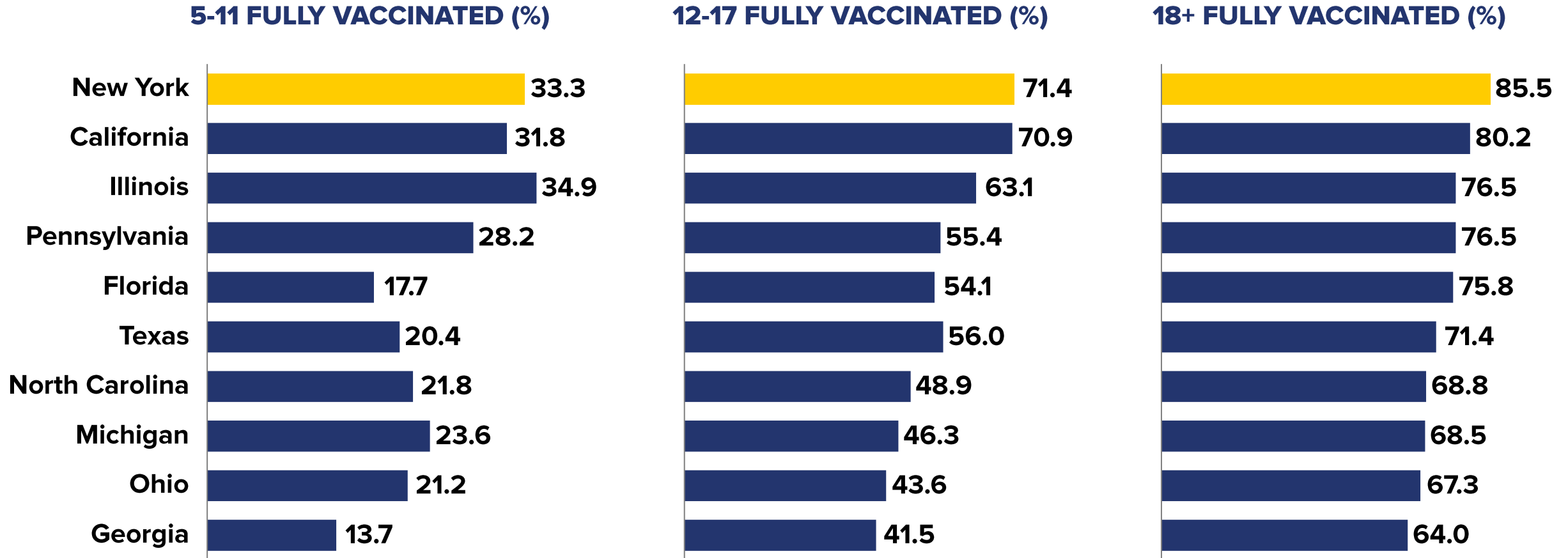


VACCINATION PROGRESS



Note: CDC began reporting 12+ vaccination data on May 13, 2021. CDC changed vaccine data tracking guidance to cap vaccination rates at 95% on December 9, 2021.
 Source: CDC Vaccination Data

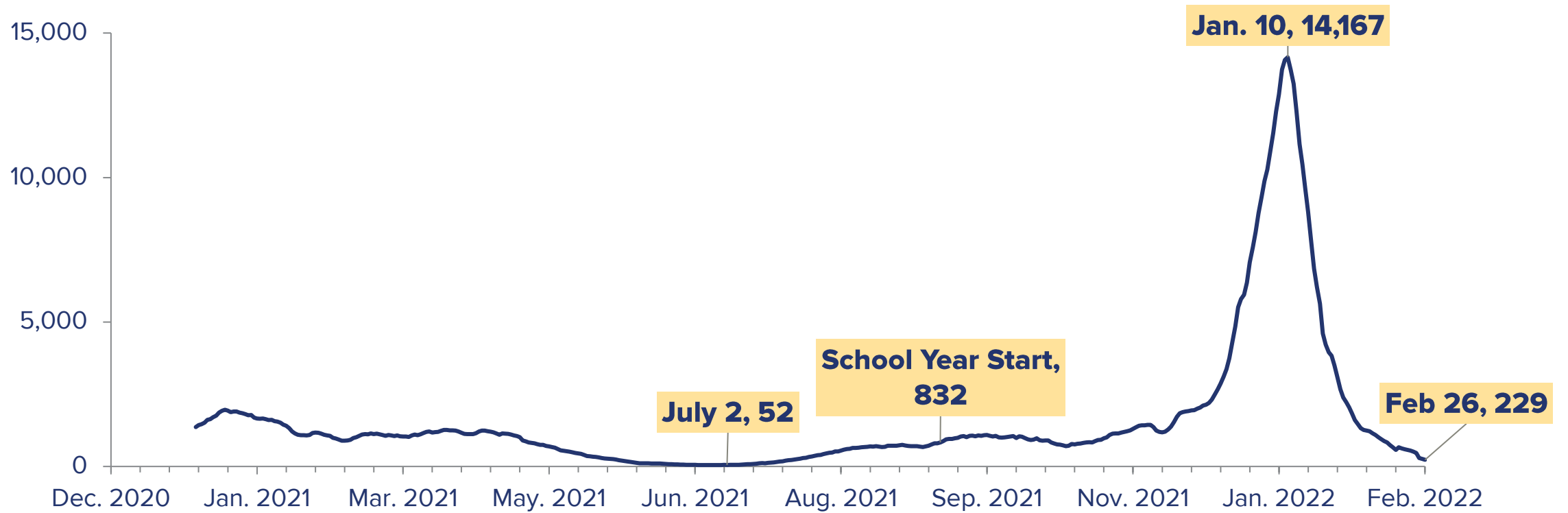
AMONG LARGE STATES, NEW YORK IS TOP 1 – 2 IN VACCINATION RATES ACROSS AGE GROUPS



Note: CDC began reporting 12+ vaccination data on May 13, 2021. CDC changed vaccine data tracking guidance to cap vaccination rates at 95% on December 9, 2021.
Source: CDC Vaccination Data

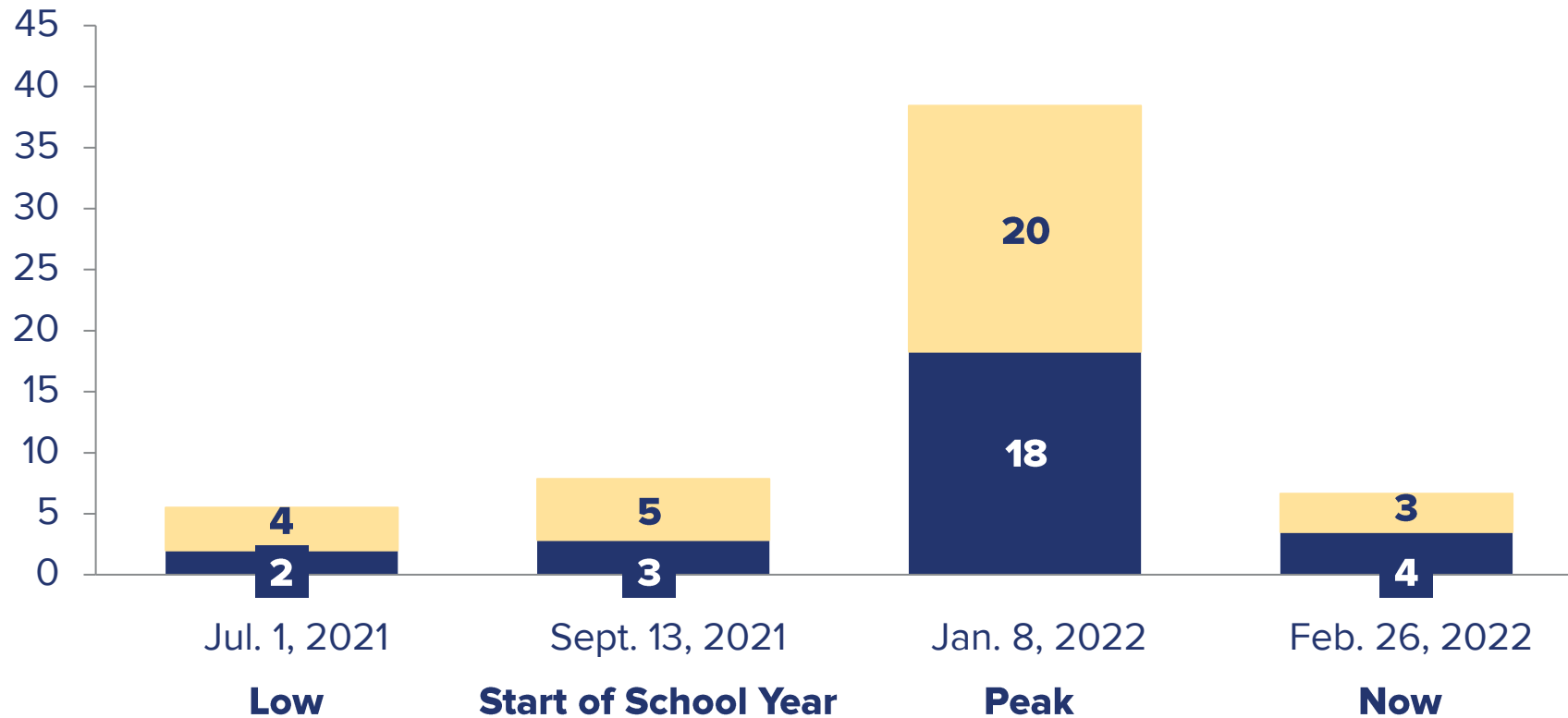
7 DAY AVERAGE CASES, CHILDREN 5 – 18

AT LOWEST POINT SINCE JULY 2021



NEW COVID-19 HOSPITAL ADMISSIONS, CHILDREN 5 – 18

7-DAY AVERAGE



CURRENTLY BELOW LEVELS FROM START OF SCHOOL YEAR

- ✓ Total admissions below the start of the 2021 – 2022 school year
- ✓ Compared to peak, total hospital admissions and COVID primary and/or symptomatic are both down ~80%

Asymptomatic

COVID primary and/or symptomatic

Top Priority: Keeping Kids Safe and In School

- ✓ 4.8 million tests sent to all students before break
- ✓ 4.8 million more tests being sent this week
- ✓ 20.8 million tests distributed to schools statewide

WINTER SURGE ACTIONS TO KEEP KIDS SAFE & IN SCHOOL



MONITOR THE METRICS



**DISTRIBUTE TESTS TO
SCHOOLS & STUDENTS**



**CONSULT EXPERTS &
SCHOOLS LEADERS**



CDC NEW GUIDANCE – COVID-19 RISK ASSESSMENT BY COUNTY

CDC COVID-19 COMMUNITY LEVELS

New COVID-19 Cases Per 100,000 people in the past 7 days	Indicators	Low	Medium	High
Fewer than 200	New COVID-19 admissions per 100,000 population (7-day total)	<10.0	10.0-19.9	≥20.0
	Percent of staffed inpatient beds occupied by COVID-19 patients (7-day average)	<10.0%	10.0-14.9%	≥15.0%
200 or more	New COVID-19 admissions per 100,000 population (7-day total)	N/A	<10.0	≥10.0
	Percent of staffed inpatient beds occupied by COVID-19 patients (7-day average)	N/A	<10.0%	≥10.0%

Statewide mask requirement in schools will be lifted effective Wednesday, March 2

- **Includes children 2 years and older in childcare facilities**
- **Counties and cities may still require masks in schools, and parents and guardians may still choose to send children to school in masks**

WE REMAIN VIGILANT:

- ✓ Distribute our 50 million test kits to schools
- ✓ Get New Yorkers vaccinated and boosted
- ✓ Advance early warning systems through wastewater surveillance
- ✓ Monitor global trends
- ✓ Retain the flexibility to re-examine and make adjustments as needed

Statewide mask requirement still in effect at:

- ✓ State-regulated healthcare settings
- ✓ State-regulated adult care facilities & nursing homes
- ✓ Correctional facilities
- ✓ Homeless shelters
- ✓ Domestic violence shelters
- ✓ Buses & bus stations, trains & train stations, subways & subway stations, planes & airports

THANK YOU

PARENTS, GUARDIANS, TEACHERS,
STAFF, AND STUDENTS!



