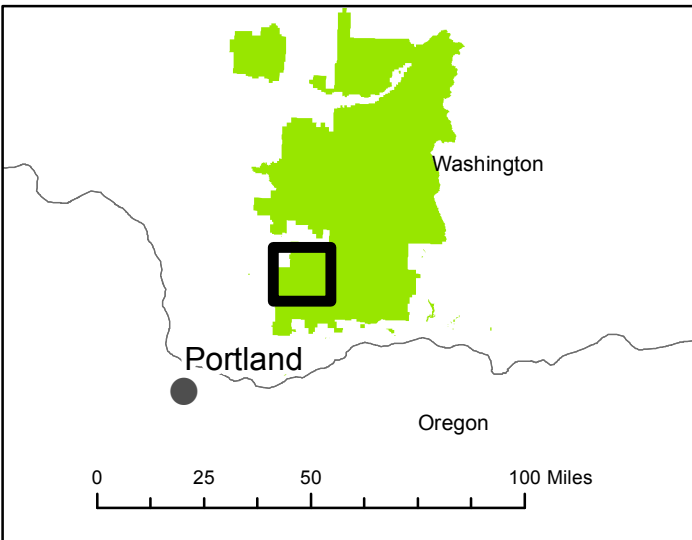
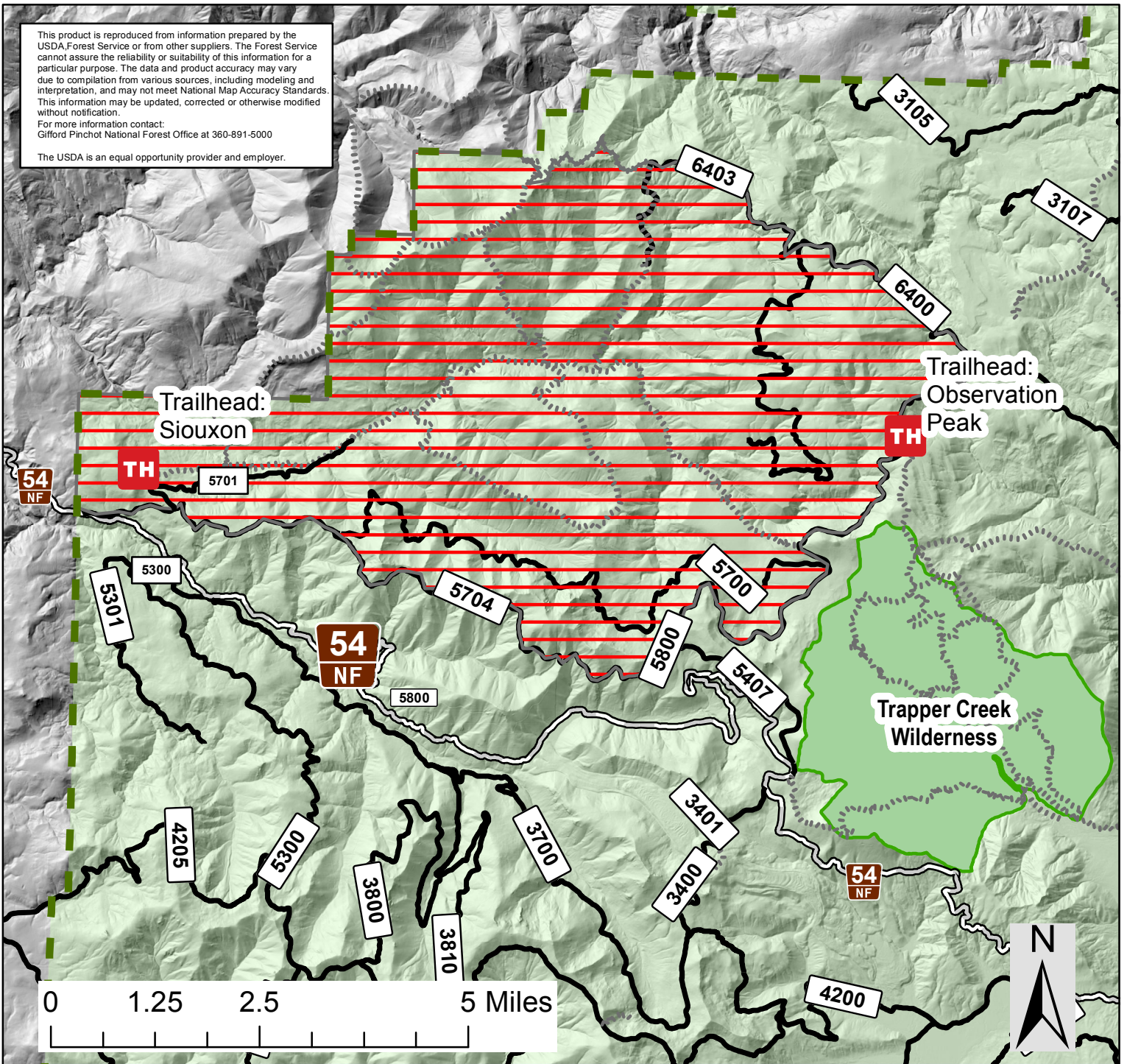




This product is reproduced from information prepared by the USDA Forest Service or from other suppliers. The Forest Service cannot assure the reliability or suitability of this information for a particular purpose. The data and product accuracy may vary due to compilation from various sources, including modeling and interpretation, and may not meet National Map Accuracy Standards. This information may be updated, corrected or otherwise modified without notification.  
 For more information contact:  
 Gifford Pinchot National Forest Office at 360-891-5000  
 The USDA is an equal opportunity provider and employer.



**Gifford Pinchot National Forest  
 USDA Forest Service  
 Mount St. Helens National Volcanic Monument  
 Siouxon Fire Area Closure  
 Forest Order No. 06-03-01-22-06**

**EXHIBIT A**



-  GPNF Boundary
-  Closure Area
-  Wilderness
-  National Forest Land