



# Rock Creek - Middle Creek Trail System

Bureau of Land Management, Redding Field Office (530) 224-2100 www.blm.gov/office/redding-field-office



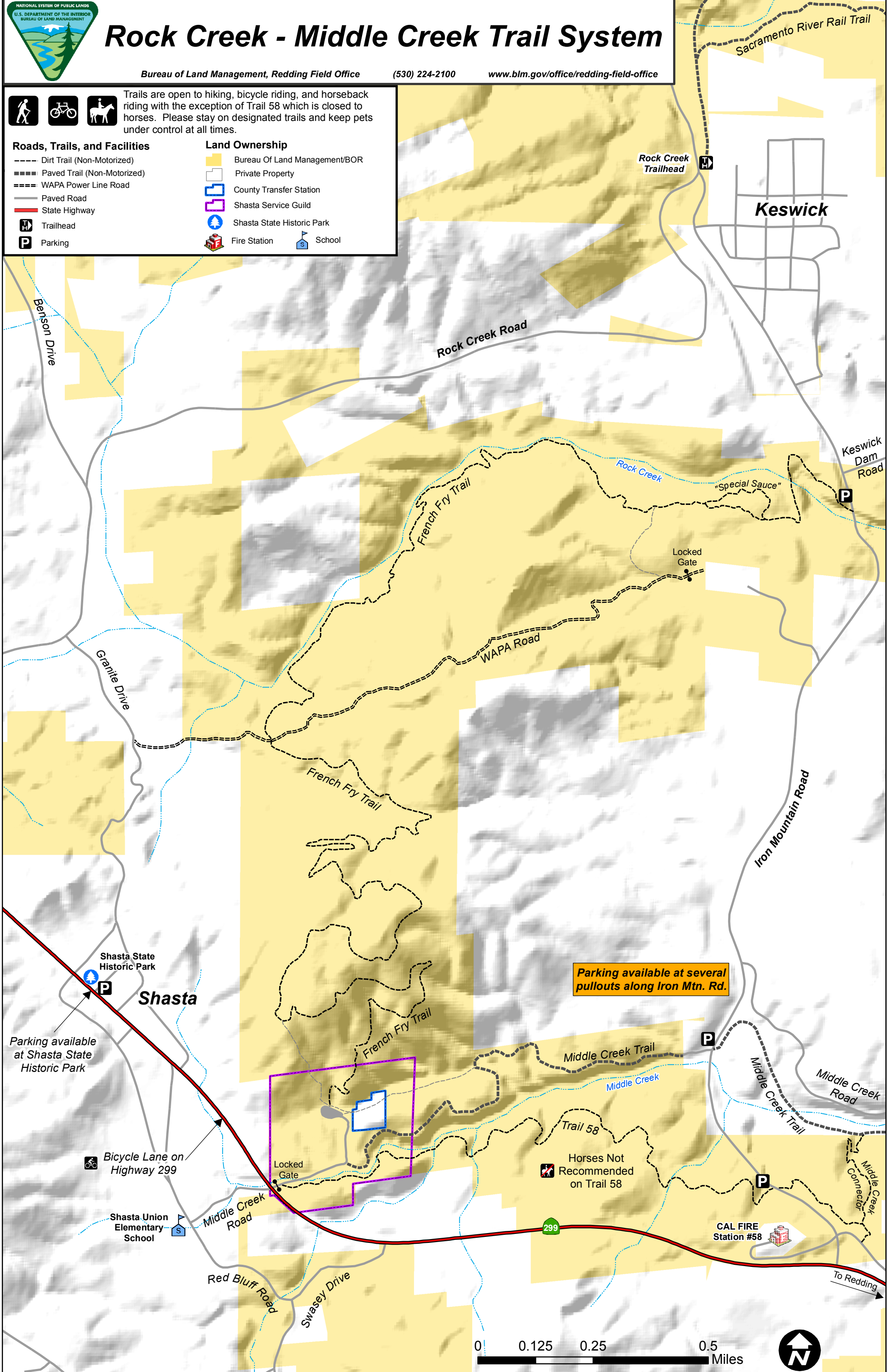
Trails are open to hiking, bicycle riding, and horseback riding with the exception of Trail 58 which is closed to horses. Please stay on designated trails and keep pets under control at all times.

### Roads, Trails, and Facilities

- Dirt Trail (Non-Motorized)
- Paved Trail (Non-Motorized)
- WAPA Power Line Road
- Paved Road
- State Highway
- 📍 Trailhead
- 🅑 Parking

### Land Ownership

- 🟡 Bureau Of Land Management/BOR
- 🏠 Private Property
- 🏢 County Transfer Station
- 🏠 Shasta Service Guild
- 🌲 Shasta State Historic Park
- 🚒 Fire Station
- 🎓 School



Sacramento River Rail Trail

Rock Creek Trailhead

Keswick

Rock Creek Road

Keswick Dam Road

Benson Drive

Rock Creek

"Special Sauce"

Locked Gate

WAPA Road

Granite Drive

French Fry Trail

Iron Mountain Road

Shasta State Historic Park

Shasta

Parking available at several pullouts along Iron Mtn. Rd.

Parking available at Shasta State Historic Park

Bicycle Lane on Highway 299

Shasta Union Elementary School

Middle Creek Road

Locked Gate

French Fry Trail

Middle Creek Trail

Middle Creek

Trail 58

Horses Not Recommended on Trail 58

Middle Creek Trail

Middle Creek Road

Middle Creek Connector

CAL FIRE Station #58

Red Bluff Road

Swasey Drive

To Redding

