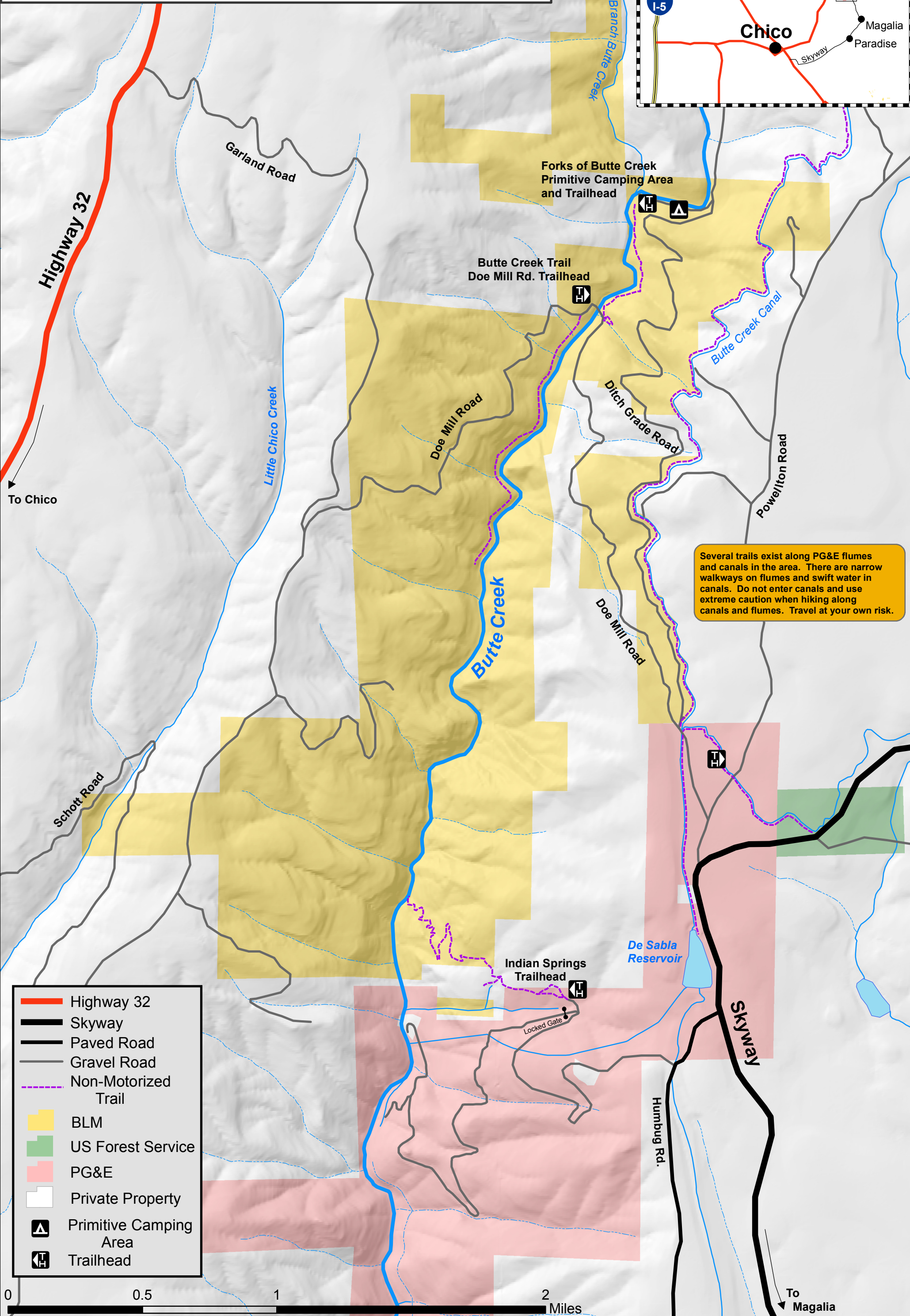
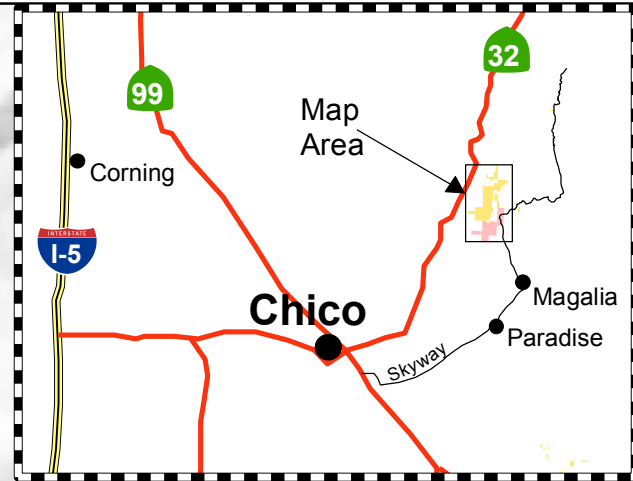


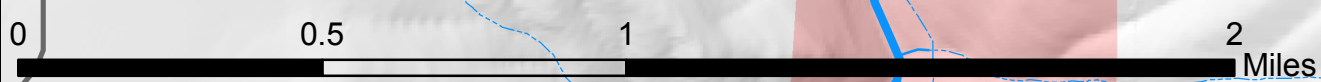
Forks of Butte Creek Recreation Area

Bureau of Land Management, Redding Field Office (530) 224-2100 blm.gov/office/redding-field-office



Several trails exist along PG&E flumes and canals in the area. There are narrow walkways on flumes and swift water in canals. Do not enter canals and use extreme caution when hiking along canals and flumes. Travel at your own risk.

- Highway 32
- Skyway
- Paved Road
- Gravel Road
- Non-Motorized Trail
- BLM
- US Forest Service
- PG&E
- Private Property
- Primitive Camping Area
- Trailhead



To Magalia