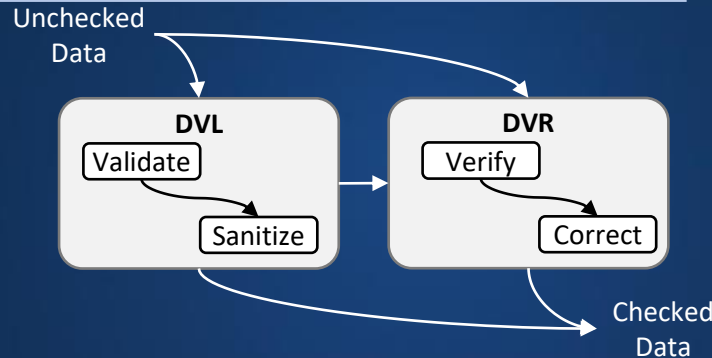


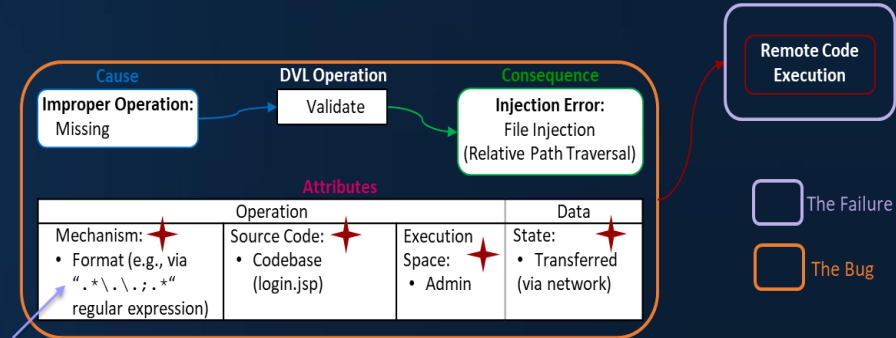
The Bugs Framework (BF): We are classifying software bugs to allow precise descriptions of vulnerability that exploit them.

Model



Example: CVE-2020-5902- BIG IP TMEU RCE

BIG-IP TMUI, also referred to as the Configuration utility, has a RCE vulnerability in undisclosed pages.



The data check bugs model helped us identify two BF classes:

- Data Validation Bugs (DVL)
- Data Verification Bugs (DVR)

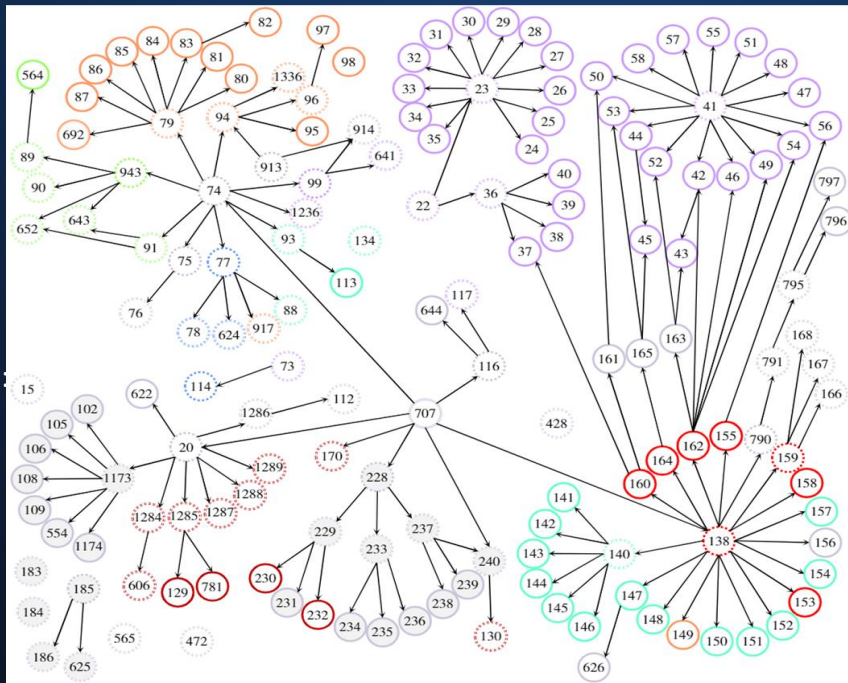
Input/Output and Injection related CWEs mapped to BF DVL & DVR

CWEs by DVL Injection Error:

- Query Injection
- Command Injection
- Source Code Injection
- Parameter Injection
- File Injection

CWEs by other consequences:

- DVL Invalid Data
- DVR Wrong Value, Inconsistent Value, and Wrong Type
- No consequence



Example: CVE-2014-0160 – Heartbleed (Updated)

