

PUGET SOUND

National Estuary Program

Oil Spill Awareness and Response Support (OSARS) Volunteer Program

This project is an effort to bridge the state / federal oil spill response program and local preparation activities with organization and programs that invest in and sustain volunteers for extended periods.

What We Are Doing

The OSARS Volunteer program is designed to engage and prepare volunteers to assist with oil spills in the Puget Sound region. Each year, over 20 billion gallons of oil and other hazardous chemicals are transported in Puget sound. Trained volunteers can support spill response and assessment.



Figure 2. Containing an oil spill

Why This Issue Is Important

The threat of an oil spill from a boat, train, or upland land use is very real and could have catastrophic outcomes to all of Puget Sound Vital Signs. The damage from an oil spill would have significant impacts on our shorelines, wildlife populations, and Puget Sound waterways. There is an untapped opportunity to engage with formal volunteer programs to support spill response and assessment in ways not yet articulated.

Photos courtesy of Washington State Department of Ecology

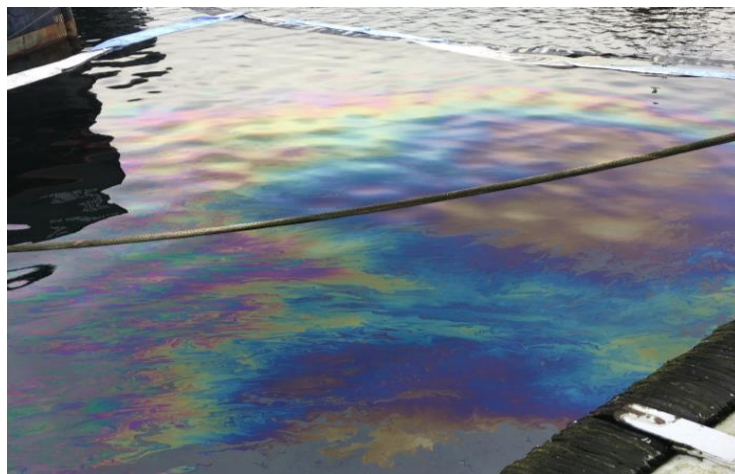


Figure 1. An oil spill's iridescent sheen on the water

What Can You Do

We want to recruit volunteers from organizations around Puget Sound. These include WSU Beach Watchers, Beach Naturalists and Shore Stewards, MRC, Audubon Society, COASST, PAWS, and many more. Volunteers from diverse organizations will help build a network to respond to an oil spill emergency

About WSU Snohomish Extension Office

WSU Snohomish County Extension continues to provide a range of activities and resources to the Citizens of Snohomish County. Natural Resource programs offer opportunities for local residents to learn about, explore and serve as stewards of our local waters, lands and wildlife. The program will occur on September 19 and 26, 2020 and be held on-line via Zoom meeting.

Registration is \$40 and will close September 17th

FOR MORE INFORMATION

extension.wsu.edu/snohomish/naturalresources/osars/

Patricia Townsend

WSU Snohomish County Extension

patricia.townsend@wsu.edu, 425-357-6020

Project based on NTA 2016-0315

