



BUILDING A BETTER I-4

Stay Informed:

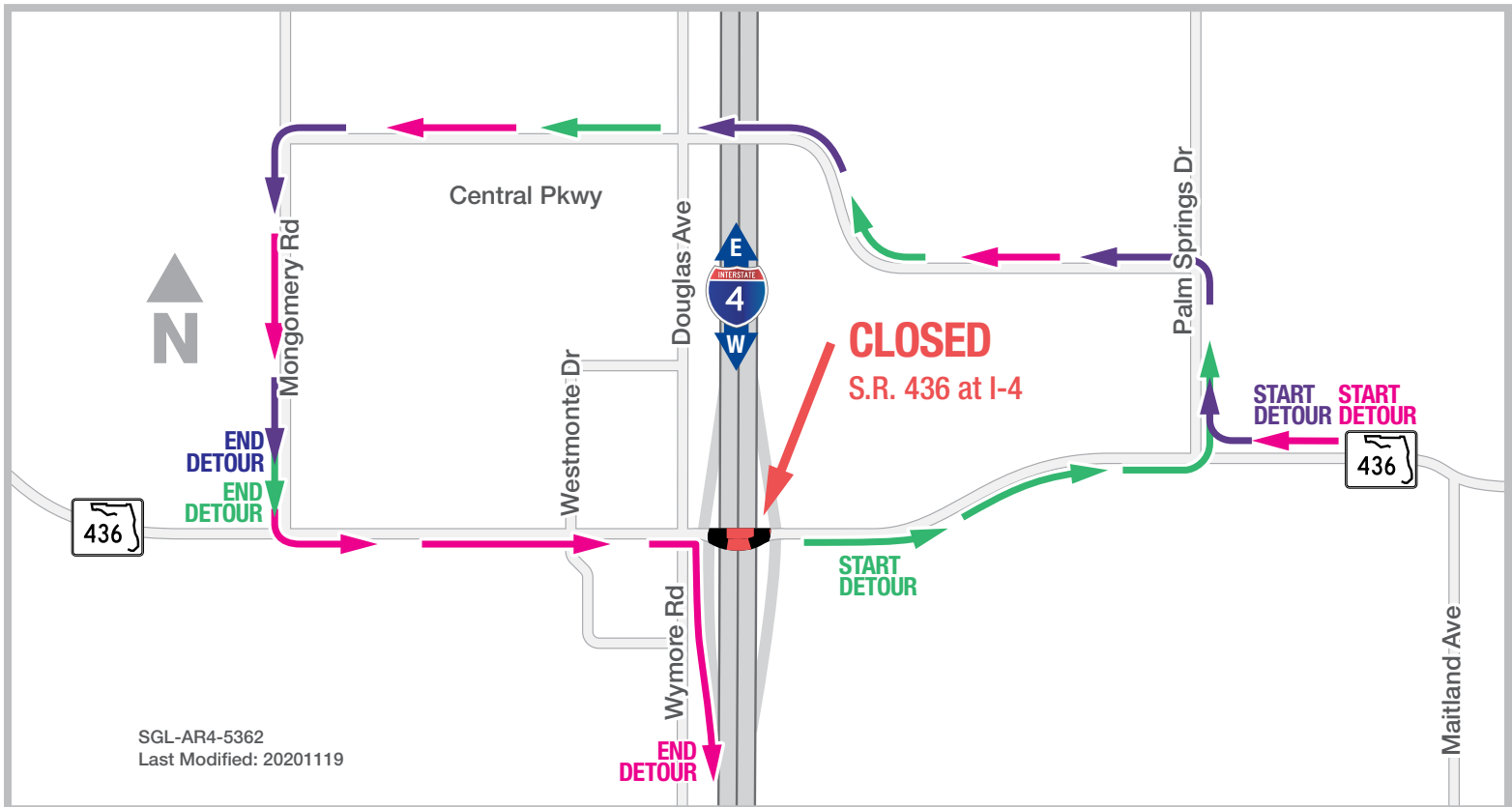
- » Project Hotline: 844-ULT-INFO (858-4636)
- » Sign up for email and text alerts at fdot.tips/I4Alerts
- » Follow @i4Ultimate on Twitter
- » Subscribe to our monthly newsletter at fdot.tips/I4News

S.R. 436 OVER I-4 CLOSING FOR ONE NIGHT

The Florida Department of Transportation (FDOT) is temporarily closing State Road (S.R.) 436 over Interstate 4 (I-4) for one night.

The full closure of S.R. 436 over I-4 will occur Friday, November 20, at 11 p.m. and reopen the following morning by 7 a.m. The temporary closure is for traffic signal work.

Please see reverse side for west side S.R. 436 detours.



Traveling from eastbound I-4 to west side of the Interchange:

- Turn right onto eastbound S.R. 436
- Turn left onto Palm Springs Drive
- Turn left onto Central Parkway
- Turn left onto Montgomery Road

Traveling from westbound S.R. 436 to west side of the Interchange:

- Turn right onto Palm Springs
- Follow green detour

Traveling from westbound S.R. 436 to westbound I-4:

- Follow purple detour
- Turn left onto S.R. 436
- Follow signage to Westbound I-4



Sign up for I-4 Construction Updates and Alerts at I4Ultimate.com

Learn about design and construction on the next 40 miles of I-4 at I4Beyond.com



BUILDING A BETTER I-4

Stay Informed:

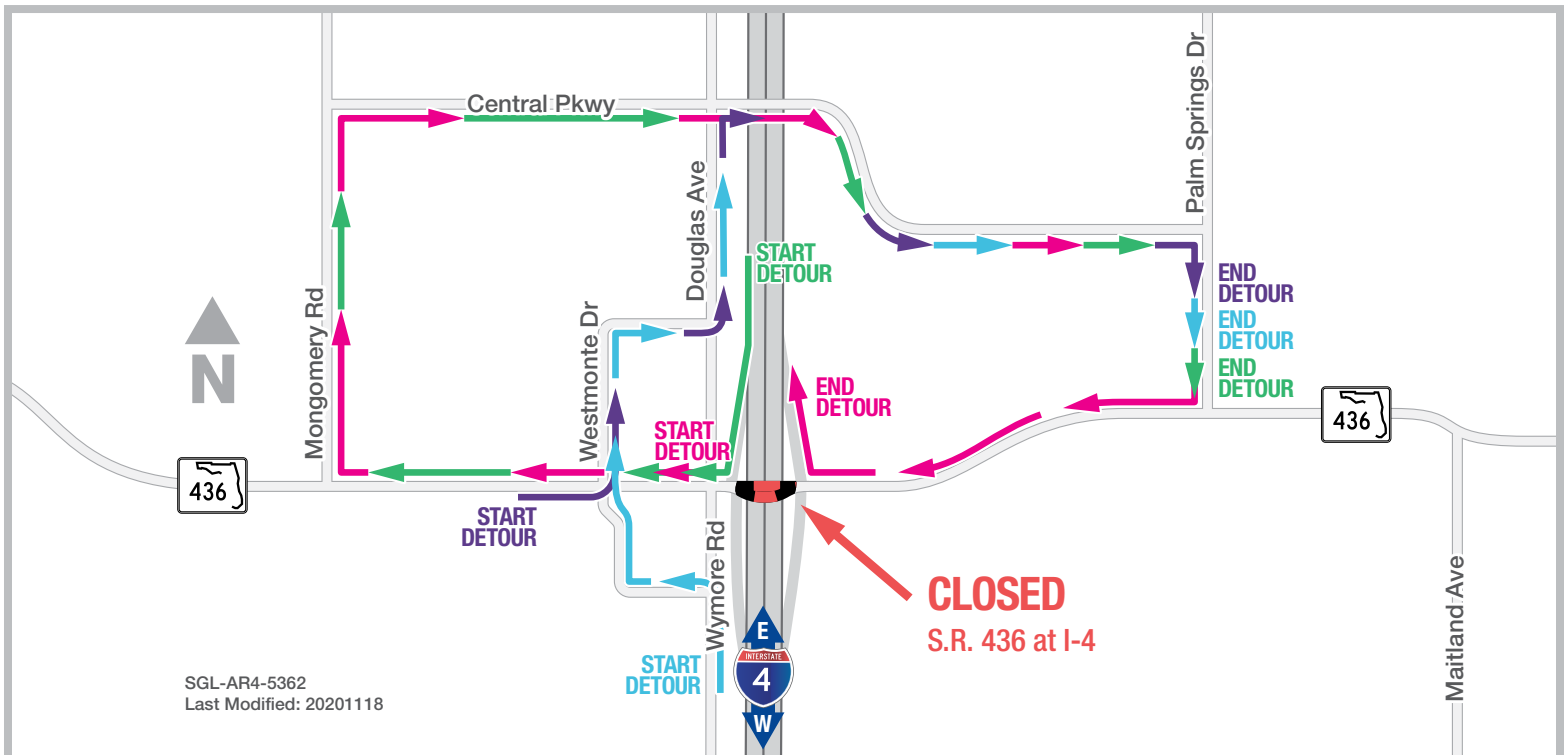
- » Project Hotline: 844-ULT-INFO (858-4636)
- » Sign up for email and text alerts at fdot.tips/I4Alerts
- » Follow @i4Ultimate on Twitter
- » Subscribe to our monthly newsletter at fdot.tips/I4News

S.R. 436 OVER I-4 CLOSING FOR ONE NIGHT

The Florida Department of Transportation (FDOT) is temporarily closing State Road (S.R.) 436 over Interstate 4 (I-4) for one night.

The full closure of S.R. 436 over I-4 will occur Friday, November 20, at 11 p.m. and reopen the following morning by 7 a.m. The temporary closure is for traffic signal work.

Please see reverse side for east side S.R. 436 detours.



SGL-AR4-5362
Last Modified: 20201118

Traveling from westbound I-4 to east side of the Interchange:

- Turn right onto S.R. 436
- Turn right onto Montgomery Road
- Turn right onto Central Parkway
- Turn right onto Palm Springs Drive

Traveling eastbound S.R. 436 to continue on S.R. 436:

- Turn left onto Westmonte Drive
- Turn left onto Douglas Avenue
- Turn right onto Central Parkway
- Turn right onto Palm Springs Drive

Traveling from westbound S.R. 436 to eastbound I-4:

- Follow green detour
- Follow signage to eastbound I-4

Traveling northbound on Wymore Road to eastbound S.R. 436:

- Turn left onto Westmonte Drive
- Turn left onto Douglas Avenue
- Turn right onto Central Parkway
- Turn right onto Palm Springs Drive



Sign up for I-4 Construction Updates and Alerts at I4Ultimate.com

Learn about design and construction on the next 40 miles of I-4 at I4Beyond.com