

Grande Tour Scenic Bikeway Management & Marketing Plan

Classic Northeast Oregon by Bicycle

Compiled by

Anita Metlen & Heather Stanhope

10/11/2011

Revised 01/10/2012

Other documents in PDF

The Grande Tour Scenic Bikeway is a 134 mile figure eight loop that begins at La Grande's Riverside park and continues to Union, North Powder then Baker City where it winds back to La Grande by way of Pondosa, Medical Springs, Union, and Cove. The Grande Tour is a classic example of the varied terrain, landscapes, and expansive vistas that represent Northeast Oregon. The route follows paved low traffic county roads through quaint towns which offer friendly smiles and a variety of amenities sure to delight both cyclists and families. Riders are encouraged to ride this route both counterclockwise and clockwise to experience all this route has to offer.

TABLE OF CONTENTS

Purpose.....	1
VISION STATEMENT	1
Short Term Goals	1
Long Term Goals	1
Plan Proponents and Committee Members.....	2
Plan Implementers and Key Contacts.....	2
Cyclist Opportunities by Category	3
Ride Description	4
Promotional Plan Time line	7
Completed Outreach	8
Media Reports	9
Public Meeting Notice	10
First-tier Businesses.....	11
Second-Tier Businesses	13
List of Items in Appendix:	16
Sign Location Table	16
Letter of support for the LG Green way and Bridge Grant.....	18

Purpose

The Grande Tour Scenic Bikeway (GTSB) Management and Marketing Plan outlines, local marketing activities and action steps to support the GTSB. The marketing team is composed of members in Union and Baker Counties that support and encourage the development of scenic bikeways in Northeast Oregon.

VISION STATEMENT

To enhance the economic stability of Northeast Oregon by identifying and enhancing a series of bikeways, utilizing current arteries, which showcase the cultural, historical and natural splendor of the area, which in turn will encourage users to stay and play.

Short Term Goals

1. Identify routes-map, complete cue sheets, list some amenities and points of interest.
2. Coordinate the routes with the responsible road jurisdictions. Gather letters of support.
3. Identify and assist with the installation of signage.
4. Ensure a web presence for maps and information at county and state level: Travel Oregon, Oregon Department of Parks & Recreation, and Chamber of Commerce for La Grande and Baker City.
5. Provide maps. Download and print maps and information from Oregon Department of Parks and Recreation for local distribution at the chamber and businesses.
6. Showcase the bikeway with a group ride organized by the local bike club and proponents.

Long Term Goals

1. Kiosk and guest book at trail head. (1-3 years)
2. Interpretive information along the route. (2-5 years)
3. Widen route to accommodate a bike lane where needed.
4. Extend the bikeway from Riverside Park to the historic Perry Bridge. (3-5 years)
5. Extend the bikeway from Perry bridge to Hilgard State Park and Blue Mountain Crossing Interpretative center off old State Highway 30. (3-6 years)

Application of Goals

Use the support, expertise and grant opportunities of Oregon Department of Parks and Recreation, Oregon Department of Transportation, Travel Oregon, Union County Tourism and the cities of La Grande, Baker City, Union, North Powder, Elgin, and Cove for the development, promotion and maintenance in conjunction with local volunteers to accomplish these goals. Implementation will begin 2012.

Plan Proponents and Committee Members

<u>Name</u>	<u>Email</u>	<u>Phone</u>
Anita Metlen	anita.metlen@hotmail.com	541-534-2008
Kim Metlen	oregoneastcycling@hotmail.com	541/ 910-0981
Joe Kresse	kressej@gmail.com	541/ 624-2119
Mike McInnis	mmcinnis@eou.edu	541/ 963-8155
Kent Coe	kcoe@eoni.com	541/ 962-7049
Heather Stanhope	hstanhope@gmail.com	541/ 786-3346
Alice Trindle	eova@eoni.com	541/ 856-3356

Plan Implementers and Key Contacts

Union County Chamber of Comm.

Judy Hector, Executive Director
541/ 963-8588 or 800/ 848-9969
director@unioncountychamber.org
www.unioncountychamber.org
www.lagrandenaturally.com
www.visitlagrande.com

La Grande - Community/Econ Dev

Charlie Mitchell, Director
1000 Adams Avenue / PO Box 670
La Grande, OR 97850
(541) 962-1307
cmitchell@cityoflagrande.org
www.cityoflagrande.org/muraProjects/muraLAG/lagcity/index.cfm/city-offices/community-development

City of Union Chamber of Commerce

Debbie Clark, Executive Director
PO Box 76 / Union, OR 97883
541/ 910-3695
debbie.clark@unioncc.org
www.unioncc.org

Elgin Chamber of Commerce

Heather Chandler, Co-President
PO Box 1001 / Elgin, OR 97827
541/ 786-1770
elgincoc@gmail.com
contact@elginoregonchamber.com
www.elginoregonchamber.com

Cove City Hall

Donna Lewis, City Recorder
504 Alder / P.O. Box 8
Cove, OR 97824
(541) 568-4566
citycove@uci.net

Union City Hall

Sandra Patterson
342 S Main / PO Box 529
Union, OR 97883
541. 562.5197
www.cityofunion.com
admin@cityofunion.com

City of North Powder

Bonita Hebert, Mayor
320 E Street / P.O.Box 309
North Powder, OR, 97867
(541) 898-2520

Baker Cnty Tourism/Base Camp Baker

Timothy Bishop CMSM
PO Box 861 / Baker City, OR 97814
541/ 523-1589
info@basecampbaker.com
www.basecampbaker.com

Baker Co Chamber of Commerce

Debi Bainter, Ex Director
541/ 523-5855
800/ 523-5855
490 Campbell Street / Baker City, OR
info@visitbaker.com
www.visitbaker.com

Cove Community Association

PO Box 31 / Cove, OR 97824
541.568.4772
Ilene Hill, Board Member
Jon van Schoohoven, Board Pres
www.coveoregon.org
ccadmin@coveoregon.org

Union County Bicycle Tourism Committee

Anita Metlen-Chairperson
65208 Hull Lane
Imbler, OR 97841
541-5364-2008
anita.metlen@hotmail.com

Eastern Oregon Visitors Association

Alice Trindle Exc. Director
541-856-3356 800-332-1843
eova@eoni.com
www.eova.com
www.visiteasternoregon.com

Local target marketing outlets. The bikeway passes through or near the following communities:

Union County: La Grande, Island City, Hot Lake Springs, Union, North Powder, Medical Springs, Pondosa, Cove, Elgin, Imbler, and Summerville.

Baker County: Baker City and Haines

These communities offer a variety of visitor amenities and points of interest that could be identified as marketing outlets.

Picture Link from Joe Kresse, Photographer

<https://picasaweb.google.com/101779325365032410168/GrandeTourPix>

Send the link to Alex and she can download any she wants. Joe.

Cyclist Opportunities by Category

Adventure Cyclists (100+ miles/day)

The GTSB is 134 miles long and provides a variety of challenges for the experienced cyclist. Several sections are very hilly and contain long grades at a moderate elevation gain. Some sections are remote with minimal traffic and services while offering solitude and awesome vistas of Northeast Oregon's classic high valleys and surrounding mountains. The Wallowa, Eagle Cap and Elkhorn Mountain Ranges provide vistas typical of the Great Basin region. Vegetation varies from farms and ranches to rolling sagebrush hills and forested mountain slopes. Populated areas range from communities of 13,000 to small hamlets and ghost towns. Ride counterclockwise and then clockwise for a totally new experience.

Day Trippers (10-40 miles/day)

Due to the figure-8 design of the GTSB and location of towns, there are a variety of 10- to 40-mile day trips that can be identified along the route:

- a) The Baker City–Medical Springs–Union or, Baker City–Haines–North Powder sections go through rolling rangeland, sagebrush hills, and forested areas.
- b) Camping or basing a ride from Catherine Creek Campground heading south provides challenging terrain with vistas of the Elkhorn & Wallowa Mountains.
- c) The Grande Ronde Valley loop- La Grande–Union–Cove goes through rich farmland and is relatively flat and easy ride.
- d) Rent a house in North Powder or Haines as your base and take day trips each direction along the GTSB.

Family, Youth/Special Groups & Novice Cyclists (1-10 miles/day)

Numerous segments of the GTSB are relatively flat, have low traffic, and offer small town amenities like parks, museums, camping and eateries.

Baker County area:

- a) Segment from Baker City west, then north to Haines has great valley and mountain views, low traffic, and good roads.
- b) Segment from Haines to North Powder has views of the Elkhorns & Wallowas, wildlife & ranch views, and low traffic.

Union County Area:

- a) Catherine Creek Campground going north to Union or south toward Medical Springs and Pondosa[more challenging] has camping, timber views, wildlife & ranch views.

- b) City of Union from the north boundary to Pyles Canyon or simply about town offers small town charm, Victorian homes, museums, Oregon State University Research Center, quaint shop, golf, art and eateries.
- c) North of Cove on the Lower Cove Road offers quiet farmlands and the surrounding forested hills toward La Grande and Mount Emily. Eagle Cap Wilderness located east of the Grande Ronde Valley with access near Cove.
- d) In La Grande's Riverside Park area, riders can travel through the La Grande city center and city parks then visit Eastern Oregon University.

Overview of the GTSB Segments

<u>Segment/Description</u>	<u>Highlights</u>	<u>Amenities</u>
La Grande to Union Length: 8.3 miles Difficulty: Easy	Ladd Marsh Wildlife Area, Hot Lake Springs Resort, farm land, views of the Grande Ronde Valley – the largest round valley in Oregon	Full amenities on both ends
Union to North Powder Length: 27.2 miles Difficulty: Medium	Climb historic Pyles Canyon, home of stagecoaches and the Oregon Trail, see wind turbines and an awesome view of the Elkhorn Range of the Blue Mountains.	Full Amenities museums, park
North Powder to Baker City Length: 34.2 miles Difficulty: Easy	Ride through rangeland with a view of the Elkhorn & Wallowa Mtns; see bald eagles, deer antelope, cows, horses, and quaint Haines Museum in Haines.	Full amenities in Baker City And North Powder Some amenities in Haines
Baker City to Medical Springs Length: 25.5 miles Difficulty: Challenging	Ride the sagebrush foothills of the Wallowa Mtns, view on the horizon the Eagle Cap and Elkhorn Wilderness Areas; ghost towns, views of the Baker Valley	Full amenities in Baker City. Pondosa has a seasonal small store and campsites
Medical Springs to Union Length: 20.1 miles Difficulty: Challenging	Cross the Wallowa Mountain foothills timbered with Ponderosa Pine and Fir; see tiny ranch valleys and the opening to the Grande Ronde Valley	Remote area, carry supplies All amenities in Union
Union to Cove to La Grande Length: 30.4 miles Difficulty: Easy	Tour through rich farmland, century farms with views of the Grande Ronde Valley, Mt. Harris, Mt Fanny and Mt Emily	Full amenities in all 3 cities

Ride Description

The Grande Tour Scenic Bikeway in northeastern Oregon offers cycling opportunities for every rider.

If you are an adventure cyclist seeking a challenging destination ride, try the entire 134 mile “figure-8” route where you’ll find plenty of rolling, winding country roads with low-traffic volume. Other cyclists wanting a more leisurely trip can ride segments of the route near quaint village communities with the amenities you’ll need to make your ride fun, comfortable and memorable.

All riders will thrill to Oregon's Outback: stunning mountain vistas, clear streams and serene farmlands. The route will take you under the scented canopy of Ponderosa pine forests, beneath towering windmills and across sweeping sagebrush rangelands.

The Bikeway covers some of the same route traveled by pioneers on the Oregon Trail. Be a pioneer yourself as you discover beautiful Eastern Oregon. Watch for elk, bald eagles and pronghorn antelope. Enjoy pastoral views of cows and horses grazing. Explore a pioneer cemetery. Visit a world-famous bronze foundry. Reconnect with your soul.

Your ride begins at Riverside Park in La Grande, a community of 13,000 with convenient access to restaurants, motels, a bicycle shop, grocery stores and several unique shops. The halfway point is historic Baker City, where you can refresh and spend a relaxing night enjoying excellent dining and accommodations. Baker City has a bicycle shop. Treat yourself to an award-winning microbrew.

The figure eight loop takes you back to La Grande. Your wheels will sing under the big sky as miles of remote open road beckon and your cares melt away. Relax, inhale the fragrant sage and crank on! Take food and water, though! It's a long way between towns out here.

Go home energized, renewed and ready to face your "other" life until your next cycling adventure! Ride on!

Talking Points

Experience **Classic** Northeast Oregon! Space, sky, fresh air, nature. History, family farms, ranches and wildlife.

Ride the Oregon Trail in the mountain shadow of the Elkhorn and Eagle Cap mountain ranges. View snowcapped peaks spring and late fall as you ride, breath taking, gorgeous.

Enjoy clear blue skies with views of the Elkhorn Range of the Blue Mountains & the Eagle Caps of the Wallowa Mountains.

Experience *Classic* NE Oregon's Outback on the Grande Tour Scenic Bikeway: stunning mountain vistas, clear streams and serene farmlands, scented canopies of Ponderosa pine forests, towering windmills and sweeping sagebrush rangelands.

Your wheels will sing under the big sky as miles of remote open road beckon and your cares melt away. Relax, inhale the fragrant sage and crank on! Bring water, though! It's a long way between towns out here.

You can't beat the fresh air and scenic panoramas while cycling the Baker and Grande Ronde high mountain valleys, come and see.

Regional Oregon Destination Marketing Organizations ODMOs connect the GTSB to a variety of state-wide tourism marketing, sales, services and information agencies. Regional members include:

Union County Chamber of Commerce

Judy Hector, Executive Director
207 Depot Street, La Grande, OR 97850
Phone: 541-963-8588 Toll Free: 800-848-9969
Email: director@unioncountychamber.org
Web: www.unioncountychamber.org
www.visitlagrande.com
www.lagrandenaturally.com

Baker County Chamber of Commerce

Debi Bainter, Executive Director
490 Campbell Street, Baker City, OR 97814
Phone: 541-523-5888 Toll Free: 888-523-5855
Email: debi@visitbaker.com
Web: www.visitbaker.com

Eastern Oregon Visitors Association

Alice Trindle, Executive Director
15477 Sky Ranch Lane, Haines, OR 97833
Phone: (541) 856-3356 Fax: (541) 856-3272
Toll Free: (800) 332-1843 or (800) 848-9969
Email: tnthorse@eoni.com
Web: www.eova.com

Base Camp Baker

Timothy Bishop, Marketing Director
P.O. Box 861, Baker City, OR 97814
PH: (541) 523-1589 Toll Free: 800-523-1235:
Email: info@basecampbaker.com
Web: www.basecampbaker.com

City of Union Chamber of Commerce

Debbie Clark, Exec Dir
PO Box 76
Union, OR 97883
Email: Debbie.Clark@unioncc.org
Web: www.unioncc.org

City of La Grande - Community/Econ Dev

Charlie Mitchell, Director
1000 Adams Avenue / PO Box 670
La Grande, OR 97850
(541) 962-1307
cmitchell@cityoflagrande.org
www.cityoflagrande.org/muraProjects/muraLAG/lagcity/index.cfm/city-offices/community-development

City of North Powder

Bonita Hebert, Mayor
635 Third Street, North Powder, OR 97867
(541) 898-2647

Marketing Tools -Here are some local and state level marketing tools and venues.

Visitor Center

**City of La Grande
Union County Chamber of
Commerce**

www.lagrandenaturally.com
www.lagrandelife.com

Visitor Center

**Baker City
Baker County Chamber of
Commerce**

www.visitbaker.com

**Eastern Oregon Visitors
Association**

www.eova.com

Janet Dodson

Marketing Consultant
Janetd@eoni.com

Oregon Tourism

www.traveloregon.com

Oregon Biking

www.orbike.com

Ride Oregon Ride

www.rideoregonride.com

Oregon State Parks & Recreation

www.oregonstatescenicbikeways.org

Pendleton On Wheels

www.pendletononwheels.org

Cycle Oregon

www.cycleoregon.com

Local/regional Events & Contacts - These annual events will serve as marketing outlets.

Grande Tour Scenic Bikeway Benefit Ride

Mid May
La Grande, OR 97850
www.mtemilysafecenter.com
anita.metlen@hotmail.com

Xterra-Solstice Triathlon

Morgan Lake
La Grande, OR 97850
3rd week in June
Solstice.com/race_info.html

Three River Race Benefit Ride

2nd weekend in June
Ride the Grande Ronde valley
La Grande, OR 97850
www.threeriversrace.com

Anthony Lakes Winter Triathlon

Anthony Lakes Mountain Resort
North Powder, OR 97867
541-856-3277
www.anthonylakes.com

Elkhorn Classic Stage Race

Baker City, OR
Annually 3rd week in June
503-329-7978

Oregon East Cycling

Custom bicycle tours
65208 Hull Lane
Imbler, OR 97841
541-534-2008
oregoneastcycling@hotmail.com
anita.metlen@hotmail.com

La Grande Crazy Days

Charlie Mitchell, Coord.
(541) 962-1307

Eastern Oregon University

541-962-3672

EOU Outdoor Program

541-962-3621

Community Health Fair

541-963-8421

ODOT Bike Rodeo

541-963-3012

Union County Fair

Nan Bigej 541-963-1011

Scout Bike Bash

541-963-2858

Promotional Plan Time line

Listed in general order of priority:

- Begin contacting Tier I & II Businesses (2012) Deliver brochures and maps. Check back by phone, personal contact and/ or email target businesses for anecdotal stories showing increase in cycling tourism; report to OPRD as received.
- Web-based promotion: An appointed member from the Proponent group will visit rideoregonride.com immediately after designation to check for accuracy and then will post comments once per month and click on the rating button and post comments and click "I did this ride" button. Keep up with the, lagrandenaturally.com monthly and respond to comments made by visitors.
- Contact road jurisdictions re: bike lanes, improvements. Proponent group will create a priority list of improvements with an emphasis on the stretch between La Grande and Union and between Union and Cove.
- Provide promotional materials and event information to DMOs and local media. Distribute brochure at local events such as La Grande Health Fair, Union County Fair. Ongoing.
- Continue to support the completion of the green belt bike/ped path along the Grande Ronde River. Ongoing
- Proponent member will write articles for DMOs to pass on to Travel Oregon. Fall 2012
- Advocate for overnight parking near the trail heads. Continue conversation with Baker City and La Grande Parks and Recreation Dept. Contact County for possible overnight parking at the Union County fairgrounds or Riverside Park.
- Contact local media to inform them about local events. Ongoing
- Distribute mini-itineraries for various types of bikeway users at Mountain Works Bicycles, La Grande 541-963-3220, www.mtnwrksbicycles.com; Flagstaff Sports Baker City, 541-523-3477 and to DMOs.
- NEOC-Northeast Oregon Cyclist Club members will ride a section of the GTSB route at least once per year. Anita will email the club and local media of scheduled events. Contact Northeast Oregon Cyclist Club by email northeastoregoncyclist@hotmail.com.
- Mt Emily Safe Center Celebrate Spring Benefit ride will use the GTSB route in May of each year. Proponent group will coordinate with Emily Safe Center to organize ride. Event information, www.mtemilysafecenter.com; Travel Oregon, Union and Baker County Chamber of Commerce, EOVA.
- Recruit sponsors for enhancement of GTSB.

-
- Funding for brochure color printing, 2012-13 season
 - Funding for route enhancements such as kiosks, additional signage, painted lines and route decals. (2012-2015)
 - Create informational posters, flyers or window sticker for distribution to businesses along the GTSB. "Cyclists Welcome," with a picture of a bicycle. (2012-2015)
 - Develop a GTSB logo and brand. Contact EOU Art Department for assistance. (2012-2013)
 - Invite Cycle Oregon 2013 weekend ride to use the GTSB as the route. Send letter to Cycle Oregon. (2012)

Completed Outreach

Kent Coe, Joe Kresse and Anita Metlen attended bicycle tourism meetings organized by Janet Dodson, Union County Tourism in La Grande starting about 2005. We created a local bicycle map for Union county with the assistance of Janet Dodson, Union County Tourism and other local volunteers. The map was published 2008.

Interest in the scenic bikeway project began at the 2008 Bicycle Summit held in Portland Oregon. Anita Metlen attended the scenic bikeways breakout session. At that time work was being done to create guidelines and an application for the program. Fall of 2009 an application for scenic bikeways was received by email from Alex Phillips, ODPH. Anita Metlen called a meeting winter 2009 to seek interest in tackling this project. The committee submitted three scenic bikeway proposals- Grande Tour, Gold Rush and Old Emigrant Hill, January 2010. Union County Tourism hosted a Scenic Bikeway committee meeting in La Grande 2010. September 2010 we were granted the opportunity to continue developing the Grande Tour Scenic Bikeway.

Work began on the GTSB application. We held or attended numerous meetings to organize, assign jobs (mapping, letters of support, public relations, route selection, marketing plans etc.) and work to completion of this project. Various members of the proponent group have attended meetings of Union county commissioners, La Grande City Council, met with Baker City officials and attended Hells Canyon Scenic Byway meetings. The proponents have presented information at local meetings about the scenic bikeway project during public comments, made presentations as an agenda item, answered questions, and request letters of support. We used this same forum to update the governing bodies as we progressed along. Phone contact and email was made with Cove, Union, North Powder, Haines city governments, US Forest Service and Oregon Department of Transportation explaining the project, to answer questions and enlist their support by letter. Contact was also made in person. Numerous car trips were made to scout the route, map, determine signage and modify information

Various proponents have attended Travel Oregon's Bicycle Summit and Bike Partnership meetings in recent years. Local news writers have been contacted over the past two years. We have had several articles in the local newspaper, The Observer. Numerous local rides have been organized to ride the proposed route in small portions or in its entirety. May 2011, the Mt Emily Safe Center-Celebrate Spring Benefit Ride was combined with the Grande Tour Scenic Bikeway Introductory Ride. The weekend was a much enjoyed event by organizers and riders. Two Observer writers participated in the ride. Jeff Peterson of The Observer published an article May 5, 2011. We had a great ride. The event is scheduled again for May 2012

Many positive comments have been received from local residents and local government officials by committee members in support of the scenic bikeway. There has been a lot of anticipation for the official status as a scenic bikeway. One fellow comment was, *"Now, that's economic development!"*. Interest in bicycle related projects has escalated because of the committees continued work and promotion of the scenic bikeway. Activities such as; custom, locally designed and manufactured bike racks have been installed in downtown La Grande as part of the Main Street Program by the Design committee. Anita Metlen was the bikerack committee chair for this project. Grant money has been received to complete a bike/ped bridge across the Grande Ronde river, connecting La Grande's Riverside park to the proposed greenway bike/ped path along the Grande Ronde river front with Island City. See letter of support written by Anita Metlen. Riverside Park is the trail head in La Grande for the scenic bikeway. Many locals realize the social, economic and enhanced livability the bikeway will contributed to La Grande, Union County, to their personal lives and to the development tourism locally. Union County is excited and ready for the Grande Tour Bikeway to be designated as an official Oregon Scenic Bikeway.

Media Reports

more in the appendix

[Home](#) » [News](#) » [Local News](#) »

Ride on! Bicycle tourism project receives 2010 Innovation Award Written by [Observer Upload](#) August 20, 2010
02:05 am

ENTERPRISE — The Northeast Oregon Economic Development District has received a 2010 Innovation Award from the National Association of Development Organizations Research Foundation for its bicycle tourism project.

Several years ago, a small USDA Rural Business Enterprise Grant project, with matching funds from the foundation, allowed NEOEDD to convene community members to talk about their interest in bike development.

Out of those conversations came a list of potential projects, several of which have been completed or are under way.

“The collaboration that has arisen around bicycle development has been truly inspiring,” said Sara Miller, NEOEDD economic development specialist.

Miller applied for the USDA grant after seeing the opportunity for local businesses to benefit from the growing interest in bicycling.

“I believe this group will continue to make things happen around cycling, with potential long-term benefits to our rural region as more and more partners get on board,” Miller said.

Some of the group’s achievements are being recognized by the National Association of Development Organizations award. These include raising funds and installing a bike rack on the public transit van, securing a pilot of the Travel Oregon Rural Tourism Studio workshops in Wallowa County with a focus on bicycle tourism development, and identification of cycling routes to create two cycling maps for Wallowa County, with both print and Internet distribution. One map features mountain bike routes, the other road routes.

The district encouraged participation in the Ford Leadership Institute Program and its project to install 70 bike racks throughout Wallowa County. It promoted trail development with the installation of signage. The district also supports the Wallowa Union Railroad Authority and the possibility of a Rail with Trail along the Grande Ronde and Wallowa rivers. And the district is working to designate a scenic bikeway along the signature Wallowa Mountain Loop cycling route, a favorite route of Cycle Oregon.

NEOEDD is a regional development organization that provides resources and facilitates decision-making for entrepreneurs, businesses and communities in Baker, Union and Wallowa counties. The district has been serving businesses and communities in Northeast Oregon since 1985.

The bicycle tourism project has received support from NEOEDD, community volunteers, local businesses, Travel Oregon, Cycle Oregon, City of Joseph, City of Enterprise, Wallowa County Chamber of Commerce, Eastern Oregon Visitors Association, U.S. Forest Service, Wallowa Resources, Community Connection, PacifiCorp and The Ford Family Foundation.

The Innovation Awards program recognizes regional development organizations and partnering organizations for improving the economic and community competitiveness regions and local communities.

Award winners will be showcased during the National Association of Development Organizations’ 2010 Annual Training Conference, to be held Aug. 28-31 in San Diego.

Dix

Public Meeting Notice



First-tier Businesses

Businesses with a high level of interest in designing marketing strategies directed at cyclists and their support group. Most of these businesses will be contacted with information about the scenic bikeway and asked for feedback concerning customer traffic related to bicycle tourism. The business will be contacted in person, by postal service, email or phone annually. We will start at zero for bicycle tourism numbers beginning 2012 then record increases from our data collection start date. The data will be shared with the county and other interested persons as requested.

Sporting Goods

Mountain Works Bicycles

Whit & Mavis Hartz
1307 Adams Ave
La Grande, OR 9750
(541) 963-3220
www.mtnwrksbicycles.com
themountainworks@eoni.com

Blue Mountain Sports

2212 Island Avenue
La Grande, OR 97850
(541)963-5115
www.facebook.com/pages/blue-mountain-sports/152819933911

Yorks General Store & Sporting Goods

1549 Campbell Street
Baker City, OR 97814
(541) 523-2577

Oregon East Cycling

Custom Bicycle Tours
Kim & Anita Metlen
65208 Hull Lane
Imbler, OR 97841
(541)534-2008
oregoneastcycling@hotmail.com

Spoiled Mule Trading CO

Hunting, Fishing, Camping
239 S Main
Union, OR 97883
(541) 562-5274

Flagstaff Sports

Basche Sage Place
2101 Main Suite 113
Baker City, OR 97814
(541) 523-3477

Restaurants & Food

10 Depot Street

Sandy Sorrels
10 Depot Street
La Grande, OR 97850
541-963-8766
www.tendepotstreet.com

Haines Steak House

910 Front Street
Haines, OR 9783
(541) 856-3639

Mamacita's International Grill

Roger Yeates
2003 4th Street / La Grande, OR
97850 541-963-6223
www.facebook.com/pages/Mamacitas/116304588397894

Gravy Dave's

363 N Main Street
Union, OR 97883
541-562-5717

Barley Brown's Brew Pub

2190 Main Street
Baker City, OR 97814
(541) 523-4266

Geiser Grand Hotel & Restaurant

1996 Main Street
Baker City, OR 97814
(541) 523-1889

Bear Mountain Pizza

2104 Island Avenue
La Grande, OR 97850
(541) 963-2327

Mt Emily Ale House

Jerry Grant
1202 Adams Avenue
La Grande, OR 97850
541/ 962-7711
www.mtemilyalehouse.com
jerry@mtemilyalehouse.com

Golden Crown

1116 Adams Avenue
La Grande, OR 97850
(541) 963-5907

Lodging

America's Best Value: Sandman Inn

2410 East R Ave
La Grande OR 97850
(541) 963-3707
www.americasbestvalueinn.com

Rodeway Inn

402 Adams Avenue
La Grande OR 97850
(541) 963-7143
www.RodewayInn.com/LaGrande

Historic Union Hotel

326 North Main
Union OR 97883
541- 562-6135

Haines Long Vac. House

811 Long Street
Haines, OR 97833
541-519-6886
www.vrbo.com/292076
4bd,sleeps 10

Baker City Motel & RV

880 Elm Street
Baker City, OR 97814
(541) 523-6381

Geiser Grand Hotel & Restaurant

1996 Main Street
Baker City, OR 97814
541- 523-1889
www.geisergrand.com

Sunridge Best Western Inn

& Conference Center
1 Sunridge Lane
Baker City, OR 97814
541-523-6444

Always Welcome Inn

175 Campbell Street
Baker City, OR 97814
(541) 523-3431
www.alwayswelcomeinn.com

Parker Cabin

720 Second St.
North Powder OR 97867
541-898-2361
vprchnp@eoni.com
2 bd, sleeps 6

Overnight Camping and RV Parks

Eagles Hot Lake RV Park

65182 Hot Lake lane
La Grande OR 97850
541- 963-5253
www.eagleshotlakerv.com

A&A RV Park

505 2nd Street
North Powder, OR 97867
(541)898-2638

La Grande Rendezvous RV Park

2632 Bearco Loop
La Grande OR 97850
541- 962-0909
rvresort@eoni.com

Mountain View Holiday Trav-L-Park

2845 Hughes Lane
Baker City, OR 97814
541- 523-4824

Elgin Hunaha RV Park

255 Cedar St
Elgin, OR 97827
541 437-2253

Catherine Creek State Park

Hwy 203 13 miles South of
The City of Union

Pondosa Store, Pondosa, OR
Camping, snacks, water

North Fork Anthony

Campground USFS [primitive],
Anthony Lakes

Rocky Ford Campground USFS,

Elk Viewing Station Road
Haines, OR

Second-Tier Businesses

Art, Clothing, Jewelry, Books & Sundries

Bella Mercantile

Beverly Calder
541.663.9463; 541-523-7490
Baker City & La Grande Outlets
www.BellaBakerCity.com
Gourmet Kitchen store, wines,
chocolates & gifts)

Avitours / Bobolink

Birdwatching
1707 5th Street
La Grande OR 97850
541- 963-2888
avitours@aol.com

Blue Turtle Gallery

1124 Adams Avenue
La Grande, OR 97850
541.963.3841

Mitre's Touch Gallery

1414 Adams Av
La Grande, OR 97850
541.963.3477
www.facebook.com/pages/Mitres-
Touch- Gallery/156443167707606

Potter's House

Judy & Bob Jensen
6th & Penn St
La Grande, OR 97850
541.963.5351
www.thepottershousegallery.com

Sunflower Books

1114 Washington Ave
La Grande OR 97850
541- 963-5242
sunflowerbooks@verizon.net
sunflowerbookstore.com

David Waln Pottery

67322 Timberline Rd.
Summerville OR 97841
541.534.2801
www.walnpottery.com

Dimond Art Glass Studio & Gallery

60881 Stackland Rd.
Cove OR 97824
541.568.4397
http://tomdimond.com

Glennis Phillips Pottery

753 North Gale
Union OR 97883
541.562.5158

Happy Walrus Art Ranch

Judd Koehn
67086 Happy Walrus Rd.
Summerville OR 97876
541.534.5395
jkoehn@eoni.com

Katherine Trefinger

604 Main St.
Cove OR 97824
541.568.4580
www.katherinetreffinger.com

Back To Nature Gallery

1617 Fourth Street
La Grande, OR 97850
541-962-0437

Nightingale Gallery

Eastern Oregon University

Loso Hall
La Grande OR 97850
541.962.3667
www.eou.edu/art/nightingale

La Grande Farmer's Market

Oregon Rural Action
Beth Wasley
PO Box 1231
La Grande OR 97850
541-663-8100
www.lagrandefarmersmarket.org
info@lagrandefarmersmarket.org

Hot Lake Springs

David Manuel
Hwy 203, P.O. Box 1043
La Grande OR 97850
541.963.4685
HotLakeSprings.com/bronze
info@hotlakesprings.com

Cross Roads Art Center

2020 Auburn Avenue
Baker City, OR 97814
(541) 523-5369

Earth & Vine Art & Wine Gallery

2001 Washington Avenue
Baker City, OR 97814
(541) 523-1687

Bella Main St. Market

Beverly Calder
2023 Main St
Baker City, OR
541. 523.7490
www.BellaBakerCity.com

Grande Ronde Hospital

900 Sunset Drive
La Grande, OR 97850

Winters Naturopathic Clinic

1606 6th Street
La Grande, OR 97850

Maridell Center (Events Ctr)

1124 Washinton Av / La grande
541-963-2023

541.963.8421
www.grh.org

Phone: 541-963-7289
Fax: 541-963-7289
www.wintersclinic.org

www.maridellcenter.com
info@maridellcenter.com
wintersnd@gmail.com

Grocery Stores & Markets

Albertson's

2212 Island Avenue
La Grande, OR 97850
541.963.8622

Albertson's

1120 Campbell Street
Baker City, OR 97814
541-524-0412

Spruce Street Market

2004 N Spruce Street / La Grande,
OR
541. 605.0248
www.facebook.com/pages/Spruce-
Street-Market-La-Grande-
Oregon/127452967295278

Safeway

2111 Adams Avenue
La Grande, OR 97850
541.663.2100

Safeway

1205 Campbell Street
Baker City, OR 97814
541- 523-7276

Grocery Outlet

11301 Island Avenue
Island City, OR 97850
541.963.6666
www.groceryoutlet.com

Kaufmann's Market

10214 Wallowa Lake Hwy
La Grande, OR
541.663.8404

Baker Food Co-op

2816 10th
Baker City, OR 97814
541- 523-6281

Wal-Mart SuperCenter (#1889)

11619 Island Avenue
Island City, OR 97850
541.963.6783
www.walmart.com

Points of Interest

Eastern Oregon Fire Museum

102 Elm St
La Grande, OR 97850
541.963.3123 or 963-8588

Eastern Oregon University

One University Blvd
La Grande, OR 97850
541.962.3672
www.eou.edu

ThinkLink Discovery Museum

2609 N 2nd St
La Grande, OR 97850
541-975-2040

Union County Arts & Culture Ctr

Charlie Kaehler
1006 Penn Ave
La Grande, OR 97850
541.624.2800
www.facebook.com/pages/Union-
County-Art-Culture-
Center/117861438284061
ucartctr@eoni.com

Mount Emily Recreation Area (MERA)

Union County-owned / managed
Sean Chambers, MERA Coordinator
1106 K Avenue, La Grande, OR 97850
541-963-1319
schambers@union-county.org
www.union-county.org (Click on
MERA) or
www.eoatva.org/index_files/Page617.h
tml
LaGrandeNaturally.com/mera

Eagle Cap Excursion Train

300 N 8th Street
Elgin, OR 97827
541.426.4543
eaglecaptrain.com
or Alegria Travel
541.963.9000 / 800.323.7330
travel@alegretravel.com

Ladd Marsh Wildlife Area

59116 Pierce Road
La Grande, OR 97850
541- 963-4954
www.dfw.state.or.us/resources/visit
ors/ladd_marsh_wildlife_area.asp

Hot Lake Springs & Resort

Lee Manuel
Hwy 203
La Grande, OR 97850
541.963.4685

Frontier Park

Front Street
Haines, OR 97833

La Grande Country Club

10603 S McAlister Ln
La Grande, OR 97850
541.963.4241

Buffalo Peak Golf Club

1234 E Fulton
Union, OR 97883
541.562.5527

Adler House Museum

2305 Main Street
Baker City, OR 97814
541-523-9308

lgccpro@eoni.com

www.buffalopeakgolf.com

Cove Warm Springs Pool

907 Water Street
Cove, OR 97824
541. 568.4890
www.coveoregon.org/localattractions_pool

Gilstrap Brothers Winery

69789 Antles Lane
Cove, OR 97824
541- 568-4646
www.gilstrapbrothers.com

Anthony Lakes Mtn Resort

47500 Anthony Lakes Hwy
North Powder, OR 97867-9100
541-856-3277
www.anthonylakes.com

Oregon Trail Interpretive Center

22267 Hwy 86 / P.O. Box 987
Baker City, OR 97814
541. 523.1843
www.blm.gov/or/oregontrail

Baker Heritage Museum

2480 Grove Street
Baker City, OR 97814
541-523-9308
www.bakerheritagemuseum.com

Eastern Oregon Museum

610 3rd Street/14514 Muddy Cr Ln
Haines, OR 97833
541-856-3233
www.hainesoregon.com/eomuseum.html

Oregon Rural Action

Washington Street
La Grande, OR 97850
(542) 975-2411
http://oregonrural.org

La Grande Life / Cold Coffee Media

La Grande, Oregon
541.963.4617
www.lagrandelife.com

La Grande Online

LaGrandeONLINE.com

La Grande Observer

Lagrandeobserver.com

Northeast Oregon Econ Development Dist

Sara Miller
101 NE First St, Ste 100
Enterprise, OR 97828
541-426-3598; or 800-645-9454
saramiller@neoedd.org
www.neoedd.org

Union County Economic Development Corp

Howard Perry, President / P.O. Box 1208
102 Depot
La Grande, OR 97850
(541) 963-0926 | Fax: (541) 963-0689
www.ucedc.org/

La Grande Main Street

PO Box 3321
La Grande, OR 97850
(541) 786-5438

Lions Club

La Grande Mtgs: Mondays @ Noon; Transit Ctr
www.facebook.com/group.php?gid=112712782104903
Baker City mtgs: Thursdays @ Noon; Sunridge Inn
http://bakercityor.lionwap.org/

Rotary Club

La Grande: Tuesday Noon @ Transit Ctr
www.facebook.com/pages/La-Grande-Rotary/132349580123718
Baker City: Mondays Noon @ Sunridge Inn
www.bakercityrotary.org

The Connetta Project

(Young Professionals)
www.theconnettaproject.com
granderondyoungpros@gmail.com

Elgin Opera House

104 N 8th
Elgin, OR 97827
541-437-1918
www.elginoperahouse.com

UC Commission on Children & Families

1106 K Ave
La Grande OR 97850
(541) 963-1034
www.unioncountykids.org/

Northeast Oregon Network

1802 4th St Ste A
La Grande OR 97850
(541) 624-5100
www.neonoregon.org

Cove Community Association

Cove OR 97824
(541) 568-4573
www.coveoregon.org

Boy Scouts of America (La Grande)

2301 Adams Ave La Grande OR 97850
(541) 963-2858
www.bmcbsa.org

Union Commercial Club

PO Box 76
Union, OR 97883

List of Items in Appendix:

Saved as a PDF

Grande Tour Scenic Bikeway tri-fold brochure with route map and cue sheet insert

Public Meeting minutes

Union County Organizations brochure

Media Coverage

Letters of Support

Logo ideas

Sign Location Table *Install counterclockwise.* Clockwise will be installed as funds are available.

Oregon Travel Experience ortravelexperience.com approves signage by request for Oregon Department of Transportation according to ODOT District 15. District 15 covers both Union and Baker Counties. ODOT jurisdiction prevails over the city road jurisdiction if a state road overlays a city road. Painted symbols in the bike lane could be used in place of a post and signs on long expanses of road to keep the ride on course.

SIGNAGELARANDE2012.XLS

<u>ROUTE ROAD</u>	<u>JUNCTION</u>	<u>COUNTERCLOCK</u>	<u>CLOCKWISE</u>	<u>LOCATION</u>	<u>JURISDICTION</u>	<u>ROAD CONTACT</u>
RIVERSIDE PK	FRUITDALE LN	RIGHT	LEFT	EXIT PARK	LA GRANDE	DANNY MARTEN 541-962-1325
FRUITDALE LN	LEFFEL RD	LEFT	RIGHT	20 FT PRIOR	UNION CO	DOUG WRIGHT 541-963-1016
LEFFEL RD	FRUITDALE LN	RIGHT	LEFT	20 FT PRIOR	UNION CO	DOUG WRIGHT 541-963-1016
FRUITDALE LN	HUNTER RD	RIGHT	LEFT	20 FT PRIOR	UNION CO	DOUG WRIGHT 541-963-1016
HUNTER RD	HWY 82	RIGHT	LEFT	20 FT PRIOR	UNION CO	DOUG WRIGHT 541-963-1016
OR HWY 82	STOP LIGHT	STRAIGHT	STRAIGHT	AT LIGHT	ODOT	PETE CALDWELL 541-963-3177
N MCALISTER RD	BUCHANAN LN	LEFT	RIGHT	40 FT PRIOR	ISLAND CITY	JUDY RIGG 541-963-5017
BUCHANAN LN	GEKELER LN	LEFT	RIGHT	40 FT PRIOR	I.CITY/UNION CO	JUDY RIGG 541-963-5017
GEKELER LN	PIERCE RD	RIGHT	LEFT	40 FT PRIOR	UNION CO	DOUG WRIGHT 541-963-1016
PIERCE RD	OR HWY 203	LEFT	RIGHT	50 FT PRIOR	UNION CO	DOUG WRIGHT 541-963-1016
OR HWY 203	N. POWDER/HWY 237	STRAIGHT	STRAIGHT	30 FT PRIOR	ODOT	PETE CALDWELL 541-963-3177
OR HWY 237	STRAIGHT	STRAIGHT	STRAIGHT	EXIT OF TOWN	ODOT	PETE CALDWELL 541-963-3177
OR HWY 237	UNDER FREEWAY	STRAIGHT	STRAIGHT	UNDERPASS	ODOT	PETE CALDWELL 541-963-3177
OR HWY 237	N POWER LN	STRAIGHT	STRAIGHT	AT CORNER	ODOT	PETE CALDWELL 541-963-3177
N POWDER LN	ELLIS RD	LEFT	RIGHT	40 FT PRIOR	BAKER CO	KEN HELGERSON 541-523-6417
ELLIS RD	ANTHONY LKS HWY	LEFT	RIGHT	40 FT PRIOR	BAKER CO	KEN HELGERSON 541-523-6417
ANTHONY LK HWY	POCAHONTAS RD	STRAIGHT	STRAIGHT	40 FT PRIOR	BAKER CO	KEN HELGERSON 541-523-6417
POCAHONTAS RD	POCAHONTAS RD	STRAIGHT	STRAIGHT	20 FT AFTER	BAKER CO	KEN HELGERSON 541-523-6417
POCAHONTAS RD	MARBLE CRK RD	LEFT	RIGHT	40 FT PRIOR	BAKER CO	KEN HELGERSON 541-523-6417
POCAHONTAS RD	OR HWY 30	RIGHT	LEFT	20 FT PRIOR	BAKER CITY	MICHELLE OWEN 541-524-2031
OR HWY 30	CAMPBELL ST	LEFT	RIGHT	20 FT PRIOR	ODOT	PETE CALDWELL 541-963-3177
CAMPBELL	HWY 7/CAMPELL/PARK	STRAIGHT	STRAIGHT	EXIT	ODOT	PETE CALDWELL 541-963-3177
HWY 7/CAMPBELL	UNDER FREEWAY	STRAIGHT	STRAIGHT	70 FT PRIOR	ODOT	PETE CALDWELL 541-963-3177
HWY 7	ATWOOD	RIGHT	LEFT	30 FT PRIOR	ODOT	PETE CALDWELL 541-963-3177
ATWOOD	ATWOOD/LINDLEY	LEFT	RIGHT	30 FT PRIOR	BAKER CO	KEN HELGERSON 541-523-6417
LINDLEY	OR HWY 86	STRAIGHT	STRAIGHT	30 FT PRIOR	BAKER CO	KEN HELGERSON 541-523-6417
LINDLEY	AIRPORT	STRAIGHT	STRAIGHT	30 FT PRIOR	BAKER CO	KEN HELGERSON 541-523-6417
LINDLEY	OR HWY 203	RIGHT	LEFT	40 FT PRIOR	BAKER CO	KEN HELGERSON 541-523-6417
OR HWY 203	OR HWY 237/MAIN	RIGHT	LEFT	20 FT PRIOR	ODOT	PETE CALDWELL 541-963-3177
OR HWY237/MAIN	OR HWY 237/E BYRON	RIGHT	LEFT	30 FT PRIOR	ODOT	PETE CALDWELL 541-963-3177
OR HWY 237/E BYRON	COVE OR HWY 237	LEFT	RIGHT	30 FT PRIOR	ODOT	PETE CALDWELL 541-963-3177
COVE OR HWY 237	DOLLARS CRN/HWY 237	LEFT	RIGHT	50 FT PRIOR	ODOT	PETE CALDWELL 541-963-3177
OR HWY 237	LOWER COVE RD	STRAIGHT	STRAIGHT	30 FT PRIOR	ODOT	PETE CALDWELL 541-963-3177
LOWER COVE RD	MARKET LN	LEFT	RIGHT	50 FT PRIOR	UNION CO	DOUG WRIGHT 541-963-1016
MARKET LN	OR HWY 82	LEFT	RIGHT	50 FT PRIOR	UNION CO	DOUG WRIGHT 541-963-1016
OR HWY 82	BOOTH LN	RIGHT	LEFT	50 FT PRIOR	ODOT	PETE CALDWELL 541-963-3177
BOOTH LN	HUNTER RD	STRAIGHT	STRAIGHT	50 FT PRIOR	UNION CO	DOUG WRIGHT 541-963-1016
BOOTH LN	MT. GLENN RD	STRAIGHT	STRAIGHT	50 FT PRIOR	UNION CO	DOUG WRIGHT 541-963-1016
FRUITDALE LN	RIVERSIDE PRK	LEFT	RIGHT	50 FT PRIOR	UNION CO	DOUG WRIGHT 541-963-1016
			17			

Letter of support for the LG Green way and Bridge Grant

November 12 ,2010

Dear Selection Committee,

This is a letter of support for the development of a public access path from Riverside Park to Island City along the Grande Ronde River. I believe public access along the Grande Ronde River would benefit Union County in many ways.

1. I believe the path would enhance the scenic value of the Grande Tour Scenic Bikeway. The river path would provide a safe, easy to follow route from the beginning of the bikeway at Riverside Park to Island City. This greenway would add one more positive to an already gorgeous 134 mile bicycle route. Oregon Department Parks & Recreation is looking for the "best of the best". The greenway will enhance the scenic bikeway even more.

2. I believe the path would enhance the livability of those who live in the Island City/ La Grande areas. The path would be used by joggers, walkers, dog walkers and bicyclist. General wellbeing will improve for those who use the path. Users will benefit physically and emotionally. Our community will benefit because those who live here will be happier and healthier thus a probable reduction in need for social services.

3. Historically, residential areas near a bike/ped path increase in value. Boise, ID., Portland, OR, Lewiston, ID, and Spokane, WA, are great examples. I am sure this will hold true for our community as well. Commuting by bicycle has become increasingly popular and so is living Green. The path would provide a safe, environmentally conscious, and pleasant route for locals who commute, who exercise regularly and tourists. Car roads will have a reduce amount of use which will in turn reduce congestion, and wear. Portland is a great example of this phenomenon.

4. I believe our community will benefit from an increase in tourism with the creation of a bike/ped path along the river. The Grande Tour Scenic Bikeway will draw users locally, regionally, and internationally. A bike/ped path will provide one more activity for tourists who stay in the Grande Ronde valley for a few days while they eat, sleep, shop and take care of unplanned events such as lost or forgotten items, mechanical repairs and health issues. Eastern Oregon University, the flower of our region, is there to attract potential students.

A public access bike/ped greenway along the Grande Ronde River would enhance Union County environmentally, economically, and socially. Yes, I do support the greenway project for all the above reasons.

Sincerely,

Anita Metlen

Grande Tour Bikeway Road Segments

Waypt	Segment	ODOT	County	City	Forest Service
1	Fruitdale Ln - START		Union		
	Leffel Rd		Union		
	Fruitdale Ln		Union		
	Hunter Rd		Union		
	Hwy 82	X			
	McAlister Rd		Union		
	Buchanan Ln		Union		
	Gekeler Ln		Union		
	Pierce Rd		Union		
	Hwy 203	X			
	Main St, Union	X			
	Hwy 237	X			
	Telocaset Ln [gravel]		Union		
	Hwy 237	X			
	2nd St, North Powder	X			
	North Powder River Ln		Union		
	Ellis Rd - north of Powder River		Union		
	Ellis Rd - south of Powder River		Baker		
	Anthony Lakes Hwy	X			
	S Rock Creek Ln		Baker		
	Pocahontas Rd		Baker		
	Hwy 30/10th St, Baker City	X			
	Campbell St, Baker City			Baker	
	Atwood Rd, Baker City		Baker		
	Lindley Rd		Baker		
	Medical Springs Hwy 203	X			
	E Beakman St, Union	X			
	E Bryan Ave, Union			Union	
	Union-Cove Hwy 237	X			
	Main St, Cove	X			
	Jasper St, Cove	X			
	Lower Cove Rd		Union		
	Market Ln		Union		
	Hwy 82	X			
	Booth Ln		Union		
	Mt Glen Rd		Union		
	Fruitdale Ln - END		Union		



Oregon

Theodore R. Kulongoski, Governor

Department of Transportation

District 13

3014 Island Avenue

La Grande, OR 97850

(541) 963-8406

FAX (541) 963-0249

Jan 27, 2012

Alex Phillips
Bicycle Recreation Coordinator
Oregon Parks and Recreation Department
725 Summer St. NE
Salem, OR 97301

Dear Alex:

ODOT Region 5 via the October 14, 2011 letter from Mike Buchanan, District 13 Manager has expressed support for the Grand Tour Route. As the Regional Traffic Engineer I have reviewed the proposed Bikeway as well. Below is a table showing the State Routes, the milepost limits, the average daily traffic (ADT), and the shoulder widths included in the bikeway.

Grand Tour Scenic Bikeway
Hwy ADT and Shoulder Summary

Location	Route No.	ODOT Hwy No.	MP	ADT (max)	Shoulder	Ped-Bike Design Guide	Notes
Booth to Market	OR 82	10	5.08 to 6.81	5000	≥4-feet	Meets or Exceeds	
Cove	OR237	342	12.35 to 13.85	1500	Bike Lanes	Meets or Exceeds	25 mph in Cove
Cove to Union	OR237	342	12.35 to 22.05	1500	Minimal	Meets	Shared lanes
Union	OR237	66	15.9 to 16.88	2700 - 2900	Minimal	Meets	25 mph in Union, Shared lanes
Union to N. Powder	OR237	66	16.88 to 33.0	320 - 1200	Minimal	Meets	Shared lanes
Union to Baker City	OR203	340	0.55 to 37 +/-	110-570	Minimal	Meets	25 mph in Baker City, Shared lanes

The Oregon Bicycle and Pedestrian Design Guide indicates on page 1-5 ;


“Shared roadways are suitable in urban areas on streets with low motor vehicle speeds or traffic volumes, and on low volume rural roads and highways. The suitability of a shared roadway decreases as motor vehicle traffic speeds and volumes increase, especially on rural roads with poor sight distance. See Bike Lane Matrix for suitability of shared roadways based on motor vehicle speeds, volume and context.”

An examination of the Bike Lane Matrix indicates that a shared roadway configuration is appropriate with an ADT of 1500 or less even at higher speeds. This is the scenario for most of the State Highways included in the bikeway without a 4 foot wide shoulder. The exception is inside the City of Union where the traffic volumes are higher, but with the lower speeds, the matrix indicates that a shared route is still appropriate.

Based on this analysis, the proposed shared lane bikeway configuration conforms with ODOT standards per the Oregon Bicycle and Pedestrian Design Guide. Since this bikeway meets this standard, we reiterate our full support for this project.

Should this route be chosen we will continue to offer support and/or input to the local proponent in the development of the Scenic Bikeway Management Plan. If you have any questions, please contact me at (541) 963-1902.

Sincerely,



Jeff Wise PE PTOE
ODOT Region 5 Traffic Engineer

Cc: file



Alex Phillips
Bicycle Recreation Coordinator &
Scenic Waterways/Water Trails Coordinator
725 Summer St. NE, Suite C
Salem, OR 97301

Fred Warner Jr.

Commission Chair
fwarner@bakercounty.org

Tim L. Kerns

Commissioner
tkerns@bakercounty.org

Carl E. Stiff, M.D.

Commissioner
cstiff@bakercounty.org

Dear Ms. Phillips:

The Baker County Board of Commissioners supports the efforts of the Oregon Scenic Bikeways program. Baker County is the home of great bikeways and scenery which enhance visitor satisfaction and economic vitality.

Baker County will work proactively in the placement of the necessary signage to direct users on the Scenic Bikeways in our County. We look forward to working with you in the future to improve and enhance the scenic biking in our area.

Sincerely,

Fred Warner Jr., Chairman
Baker County Board of Commissioners



Commissioners
Baker County
1995 Third Street
Baker City, OR 97814

RECEIVED
AUG 15 2011
STATE PARK AND
RECREATION DEPARTMENT

Oregon Parks & Recreation
Attn: Alex Phillips, Bicycle Recreation Coord.
725 Summer St. NE, Suite C
Salem, OR 97301



neopost
08/12/2011
US POSTAGE

FIRST-CLASS MAIL
\$00.44

ZIP 97814
041111221288

9730131288





UNION COUNTY BOARD OF COMMISSIONERS

Steve McClure Commissioner
Mark D. Davidson, Commissioner
William D. Rosholt, Commissioner

1106 K Avenue La Grande, OR 97850 PHONE (541)963-1001 FAX (541)963-1079 TTY 1-800-735-1232

February 7, 2011

Alex Phillips
Bicycle Recreation Coordinator
Oregon Parks and Recreation Department
725 Summer Street, NE
Salem, OR 97301

Dear Alex:

The Union County Board of Commissioners have been informed about the Oregon Scenic Bikeway routes proposed for Union County. We have reviewed the maps of the proposed routes and discussed them with our Public Works Director.

We are pleased to lend our support for the Oregon Scenic Bikeway designations for the Grand Tour, Gold Rush, and the Hells Canyon Scenic Bikeway. We recognize the value of such recreational attractions to our County and hope that the Oregon Scenic Bikeway Committee will be able to add these routes to those approved in Oregon.

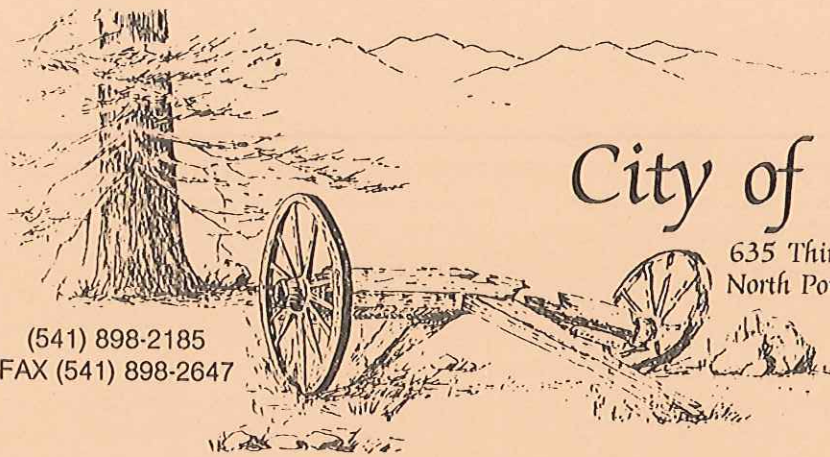
Sincerely,

Steve McClure
Chairman

Mark D. Davidson
Commissioner

William D. Rosholt
Commissioner

cc: Anita Metlen



City of North Powder

635 Third Street — P.O. Box 309
North Powder, Oregon 97867-0309

(541) 898-2185
FAX (541) 898-2647

Alexandra Phillips
Bicycle & Water Recreation Coordinator
Oregon Parks & Recreation Department
725 Summer Street NE, Ste. C
Salem, OR 97301-0792

September 16, 2011

Dear Ms. Phillips,

The City of North Powder would like to show support for the proposed "Grande Tour" Scenic Bikeway that would pass through North Powder along Hwy 237. The route would begin and end in LaGrande. It would make a figure eight as it passes through Union, North Powder and Baker City, through Medical Springs, back through Union and Cove. The route would certainly be beneficial to North Powder from both a financial perspective for our businesses and creating more exposure for our town. We have some beautiful, and at times breathtaking scenery in this part of the valley.

Please feel free to contact us if we can be of further assistance.

Sincerely,

Bonita Hebert
Mayor

Right In The Ruts Of The Oregon Trail



City of Baker City, Oregon

P.O. Box 650
Baker City, OR 97814-0650
541-523-6541 Voice/TDD
541-524-2049 FAX

May 27, 2011

Alex Phillips
Bicycle Recreation Coordinator &
Scenic Waterways / Water Trails Coordinator
725 Summer St. N.E., Suite C
Salem, Oregon 97301

Dear Ms. Phillips:

The City Council of the City of Baker City would like to lend its support to the Oregon Scenic Bikeways program. The Council was pleased to hear of the proposed development of the three bikeways including the Grande Tour, Hells Canyon and the Gold Rush. The Scenic Bikeways are an excellent way to promote our community and the beautiful scenery surrounding Baker City.

The Public Works Department will be pleased to coordinate the placement of the necessary signage to direct the users of the Scenic Bikeways. We are looking forward to the completion of the project and the opportunity to share our City with those utilizing the bikeways.

Sincerely,

A handwritten signature in black ink, which appears to read "Dennis Dorrah". The signature is fluid and cursive, with a long, sweeping underline.

Dennis Dorrah
Mayor, City of Baker City

Parks & Recreation Department 2402 Cedar Street La Grande, Oregon 97850 PHONE (541) 962-1352 FAX (541) 663-1873

May 25, 2011

Alex Phillips
Scenic Bikeway Coordinator
Oregon Department of Parks and Recreation

RE: Grande Tour Scenic Bikeway

Dear Alex,

The Union County Bicycle Tourism Committee has asked that I write a letter in support of the Grande Tour Scenic Bikeway, specifically the designation of Riverside Park in La Grande as a trailhead along the bikeway, and I am glad to do so.

Riverside Park is the premier family park in La Grande and the local bike groups have used it in the past as a trailhead for area rides and fundraisers as well as social gatherings. We have worked with them on these events and they have proven to be very successful for everyone involved. In 2012, construction will start on a bridge spanning the Grande Ronde River that runs along the southeast edge of the park. The bridge will serve as the trailhead to the greenway linking Riverside Park to Island City's proposed park and fishing ponds.

It is my understanding you plan to install signs within the City limits directing visitors to the park. The contact person regarding the route sign placement would be Norm Paullus, Public Works Director, (541) 962-1325.

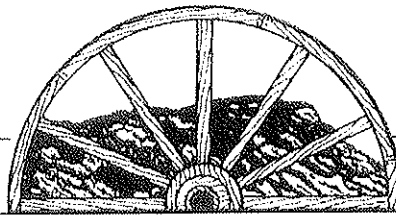
I look forward to working with the Tourism Committee on this project. If you have questions or need additional information regarding Riverside Park, please do not hesitate to call me at (541) 962-1352, Ext. 203.

Sincerely,

Mark Touhey
Parks Director

mt

CITY OF



LA GRANDE

THE HUB OF NORTHEASTERN OREGON

Parks & Recreation Department 2402 Cedar Street La Grande, Oregon 97850 PHONE (541) 962-1352 FAX (541) 663-1873

June 8, 2011

Anita Metlin
Grande Tour Scenic Bikeway Committee
La Grande, Oregon 97850

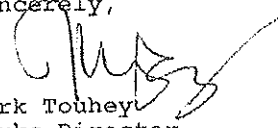
RE: Parking at Riverside Park

This letter is in response to the Committee's request to designate overnight parking spaces in Riverside Park for vehicles participating in the Grande Tour Scenic Bikeway between La Grande and Baker City. While we are supportive of your request, Riverside Park currently does not have adequate parking places to authorize it at this time.

In 2012, construction will start on a bridge spanning the Grande Ronde River that runs along the southeast edge of the park. The bridge will serve as the trailhead to the greenway linking Riverside Park to Island City's proposed park and fishing ponds. As we move forward with the planning process for the greenway, there is a high possibility that there will be additional parking lots constructed. I will recommend that consideration be given to your request at that time.

If you have questions or need additional information regarding Riverside Park, please do not hesitate to call me at (541) 962-1352, Ext. 203.

Sincerely,


Mark Touhey
Parks Director

mt

The Grande Tour Scenic Bikeway in northeastern Oregon offers cycling opportunities for every rider.

If you are an adventure cyclist seeking a challenging destination ride, try the entire 134-mile "figure-8" route where you'll find plenty of rolling, winding country roads with low-traffic volume. Cyclists wanting a more leisurely trip can ride segments of the route near quaint village communities with the amenities to make your ride fun, comfortable and memorable.

All riders will thrill to Oregon's Outback: stunning mountain vistas, clear streams and serene farmlands. The



route will take you under the scented canopy of Ponderosa pine forests, beneath towering windmills and across sweeping sagebrush rangelands.

The Bikeway covers some of the route traveled by pioneers on the Oregon Trail. Be a pioneer yourself and discover beautiful Eastern Oregon. Watch for elk, bald eagles and pronghorn antelope. Enjoy pastoral views of cows and horses grazing. Explore a pioneer cemetery. Visit a world-famous bronze foundry.

Reconnect with your soul.



Your ride begins at Riverside Park in La Grande, a community of 12,500 with convenient access to restaurants, motels, grocery stores and unique shops. The halfway point is historic Baker City, where you can refresh and spend a relaxing night enjoying excellent dining and accommodations. Treat yourself to an award-winning microbrew.

A different route brings you back to La Grande. Your wheels will sing under the



Geiser Grand Hotel, Baker City

big sky as miles of remote open road beckon and your



Image compliments of Bruce Johnson, OregonPhotos.com

cares melt away. Relax, inhale the fragrant sage and crank on! Bring water, though! It's a long way between towns out here.

Go home energized, renewed and ready to face your "other" life until your next cycling adventure!



For other Oregon bike routes see www.oregonscenicbikeways.org

OREGON SCENIC BIKEWAYS

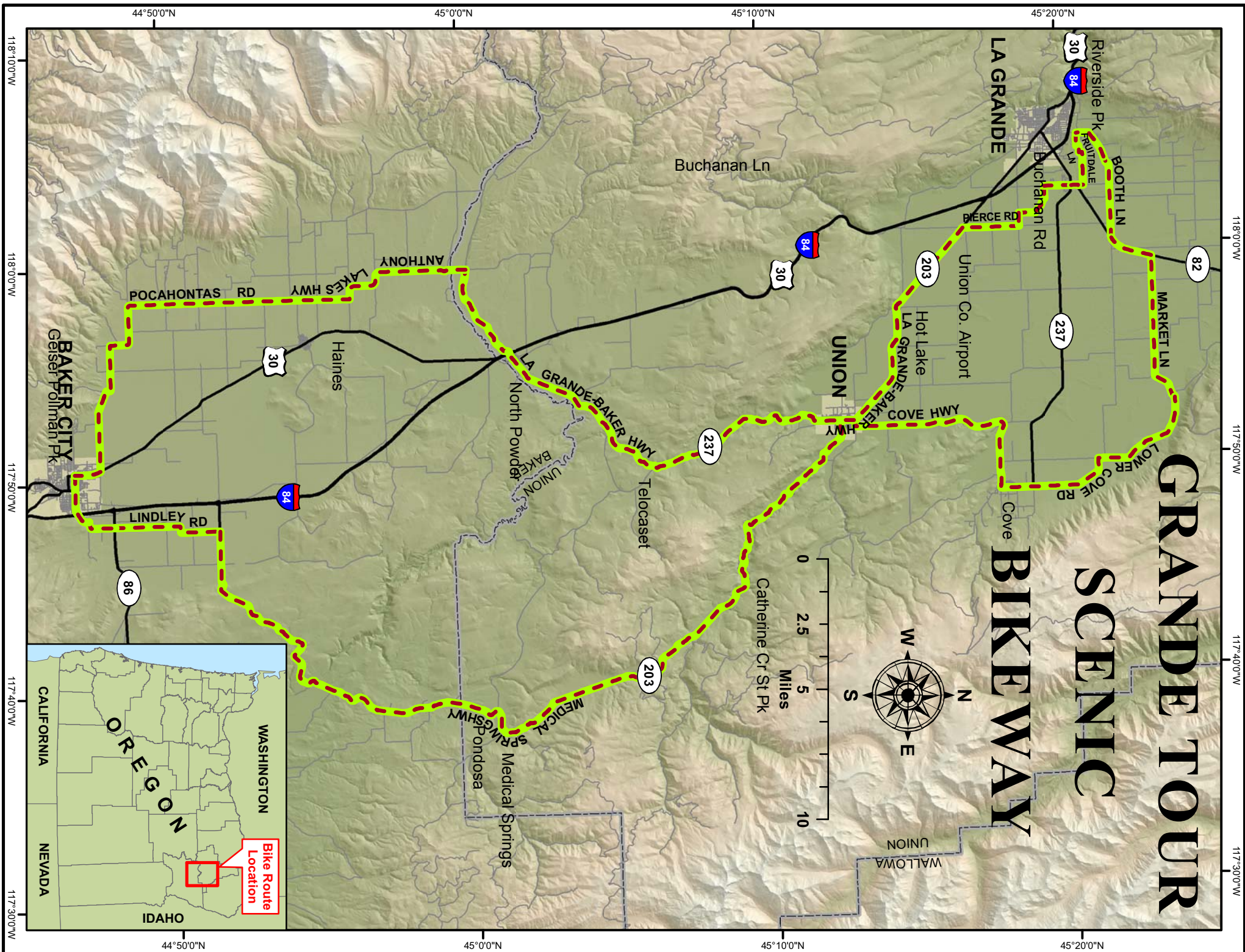
THE GRANDE TOUR

*Be a pioneer and discover
beautiful Eastern Oregon.*



Photo: Joe Kresse

LaGrandeNaturally.com



	GRANDE TOUR SCENIC BIKEWAY						
LOCATION	ROUTE ROAD	JUNCTION	Miles	Cum	COUNTER	Cum	CLOCKWISE
LA GRANDE	RIVERSIDE PK	FRUITDALE LN	0.0	0.0	RIGHT	134.3	LEFT
	FRUITDALE LN	LEFFEL RD	0.6	0.6	LEFT	134.3	RIGHT
	LEFFEL RD	FRUITDALE LN	0.1	0.7	RIGHT	133.7	LEFT
	FRUITDALE LN	HUNTER RD	1.7	2.4	RIGHT	133.6	LEFT
	HUNTER RD	HWY 82	0.2	2.6	STRAIGHT	131.9	LEFT
ISLAND CITY	HWY 82	STOP LIGHT	0.2	2.8	STRAIGHT	131.7	STRAIGHT
	N McALISTER RD	BUCHANAN LN	1.1	3.9	LEFT	131.5	RIGHT
	BUCHANAN LN	GEKELER LN	1.8	5.7	LEFT	130.4	RIGHT
	GEKELER LN	PIERCE RD	0.5	6.2	RIGHT	128.6	LEFT
UNION	PIERCE RD	HWY 203	2.1	8.3	LEFT	128.1	RIGHT
	HWY 203	HWY 237	8.9	17.2	STRAIGHT	126.0	RIGHT
TELOCASET	HWY 237	N/A	8.6	25.8	STRAIGHT	117.1	N/A
NORTH POWDER	HWY 237	FREEWAY UNDER	7.6	33.4	STRAIGHT	108.5	STRAIGHT
	HWY 237	N POW. RIVER LN	0.1	33.5	STRAIGHT	100.9	LEFT
	N POWDER LN	ELLIS RD	3.9	37.4	LEFT	100.8	RIGHT
	ELLIS RD	ANTHONY LKS	0.7	38.1	LEFT	96.9	RIGHT
	ANTHONY LKS.	POCAHONTAS RD	5.8	43.9	STRAIGHT	96.2	STRAIGHT
	POCAHONTAS RD	POCAHONTAS RD	0.7	44.6	STRAIGHT	90.4	STRAIGHT
	POCAHONTAS RD	MARBLE CRK RD	6.6	51.2	LEFT	89.7	RIGHT
BAKER CITY	POCAHONTAS RD	US 30	7.1	58.3	RIGHT	83.1	LEFT
	US 30	CAMPBELL ST	1.0	59.3	LEFT	76.0	RIGHT
	CAMPBELL ST	GEISER/POLLMAN	0.7	60.0	STRAIGHT	75.0	STRAIGHT
	CAMPBELL ST	FREEWAY UNDER	0.9	60.9	STRAIGHT	74.3	STRAIGHT
	CAMPBELL ST	ATWOOD	0.2	61.1	RIGHT	73.4	LEFT
	ATWOOD	ATWOOD/LINDLEY	0.3	61.4	LEFT	73.2	RIGHT
	LINDLEY	STATE 86	1.2	62.6	STRAIGHT	72.9	STRAIGHT
To	LINDLEY	AIRPORT	2.2	64.8	STRAIGHT	71.7	STRAIGHT
MEDICAL SPRINGS	LINDLEY	HWY 203	2.0	66.8	LEFT	69.5	RIGHT
UNION	HWY 203	HWY 237	37.2	104.0	RIGHT	67.5	LEFT
	HWY 203	E BRYAN AVE	0.6	104.6	RIGHT	30.3	LEFT
	E BRYAN AVE	N COVE ST/H237	0.3	104.9	LEFT	29.7	RIGHT
COVE	HWY 203	DOLLARS CORNER	8.3	113.2	LEFT	29.4	RIGHT
	HWY 203	LOWER COVE RD	1.2	114.4	STRAIGHT	21.1	STRAIGHT
	LOWER COVE RD	MARKET LN	7.6	122.0	LEFT	19.9	RIGHT
	MARKET LN	HWY 82	5.8	127.8	LEFT	12.3	RIGHT
	HWY 82	BOOTH LN	0.9	128.7	RIGHT	6.5	LEFT
	BOOTH LN	HUNTER RD	0.8	129.5	STRAIGHT	5.6	STRAIGHT
	BOOTH LN	MT. GLENN RD	3.1	132.6	STRAIGHT	4.8	STRAIGHT
LA GRANDE	FRUITDALE LN	RIVERSIDE PRK	1.7	134.3	LEFT	1.7	RIGHT
		Total	134.3				

Oregon Scenic Bikeways designations could lure visitors, aid local economy

Written by [Bill Rautenstrauch, The Observer](#) September 29, 2010 05:32 am

Union County and Northeast Oregon a mecca for bicyclists from throughout Oregon and the United States?

It could happen, and sooner than you think.

For the past year or so, a local group has been working to get three routes certified as Oregon Scenic Bikeways under a new Oregon Parks and Recreation Department program.

The effort is close to bearing fruit. Out of three local applications reviewed, one route has received a positive evaluation and another is close to getting the nod.

The next step for the group is to build local support and start to develop a management plan.

“We need to be talking it up, taking rides, forming a club and getting the city and local tourism groups on board,” said Anita Metlen, leader of the group and also an owner of the Mountain Works bike shop in La Grande.

The Oregon Scenic Bikeway program is designed to build a system of cycling routes that showcase Oregon’s natural wonders and cultural history, while providing economic and social benefits for communities.

Oregon Scenic Bikeways are identified by the state parks department as the best rides in the state. It is hoped they will attract domestic and international tourism dollars, and provide recreational and promotional value to the communities they pass through.

The routes are evaluated and selected by an OPRD committee set up for the purpose. To date, only one route — a 132-mile ride through the Willamette Valley — has been established.

Metlen said she has high hopes for local routes respectively designated the Grande Tour and the Goldrush. The Grande Tour shows special promise and stands a good chance of being included the system.

“Actually, 1,000 miles of bikeways were submitted statewide for consideration this year. Six hundred and fifty were approved, and of those, the Grande Tour is 130 miles,” Metlen said.

The Grande Tour route, which basically follows the path of the already-established Grande Tour Byway motor route, would begin and end in La Grande.

The ride would take cyclists by Hot Lake on Highway 203, then pass through Union, Pyle’s Canyon and Telocaset, North Powder and the Powder Valley, and Baker City.

On the way back it would hit Pondosa, Medical Springs, Catherine Creek State Park, Cove

and Island City.

“Basically, it makes a big figure 8,” Metlen said.

Judging criteria include scenery, man-made features, historical attractions, route conditions, traffic volume and more. The 11-member Scenic Bikeway Program committee rode the route in June and liked it, though it thought there should be a different starting point.

“Originally, the route started at the Flying J Truck Stop, just because there was a lot of parking there,” Metlen said. “They wanted something that was located closer to the community and had public amenities like water and bathrooms. We picked Riverside Park in La Grande.”

The Scenic Bikeway committee also liked the proposed Gold Rush route that begins at Hilgard Junction State Park and heads south toward the old gold-mining communities of Granite and Sumpter before ending in Baker City.

But at the time the committee tried the route, a stretch between the North Fork of the John Day Campground and Granite was being paved. The committee decided to continue its evaluation of the route to another time.

“This is within a hairsbreadth of being approved, but they have to go out and look at it again,” Metlen said.

Metlen’s group also proposed a Scenic Bikeway route that travels along Highway 30 from the Spring Creek exit on Interstate 84 to Mission and Pendleton in Umatilla County.

The state committee considered but rejected that route, Metlen said. The big problem was that the route closely parallels the freeway.

“Remember, these rides are supposed to be the best of the best. I think they thought the freeway is too visible from too many places,” she said.

Metlen said the Scenic Bikeway program likes routes that go along roads that are already being marketed as attractions.

She said that her group is helping the Eastern Oregon Visitors Association develop a bike route that runs along the Hells Canyon Scenic Byway, which is recognized by the U.S. Federal Highway Administration as an All-American Road.

In the meantime, there is plenty of work to do on the Grand Tour application.

The local group will continue to marshal public support, and refine a management plan that will eventually be reviewed by the state committee at a public meeting.

From there, the committee makes a recommendation to the Oregon Recreation Trail Advisory Board, which in turn gathers public comment and forwards a recommendation to the Oregon Parks and Recreation Department director.

Final approval is given by the OPRD Commission.

Metlen, an avid cyclist herself, said she thinks a Scenic Bikeway designation or two can't help but attract visitors and boost the local economy.

"The idea is to show everybody that we have something really good here when it comes to road riding," she said.



print this



rss feed



subscribe

Close Window

Grande and scenic

Written by Dick Mason, The Observer October 31, 2010 08:27 am



Riverside Park may soon be the destination of bicyclists throughout the Northwest.

The park is the proposed starting and ending point of a route that could soon become part of the Oregon Scenic Bikeways Program, which is run by the Oregon State Parks and Recreation Department.

Named the Grande Tour Scenic Bikeway, the proposed 130-mile route has cleared several application hurdles. The Grande Tour is now one of eight proposed routes the Oregon State Parks and Recreation Department is close to adding to the Oregon Scenic Bikeways Program.

Anita Metlen of Imbler is leading the effort to get the Grande Tour added to the Oregon Scenic Bikeways Program. Saturday she was joined by other cyclists and together they rode a portion of the route.

The Grande Tour would take bicyclists from Riverside Park to Baker City by way of Union, North Powder and Haines on Highway 30 on the first half of the journey.

Riders in the second half would then bike north to Pondosa, then take Highway 203 to Union and Cove and finally Highway 237 into La Grande.

Riders on the route would of course go though the towns listed plus Hot Lake, Catherine Creek State Park and other sites.

The top selling points of the proposed route include low traffic, opportunities to see the Wallowas, the Elkhorns and the Blue Mountains, and access to food and lodging. The variety of terrain on the route is another plus. It includes pasture and crop land, sagebrush and forest land.





Originally supporters of the bikeway had proposed that the route begin at a site east of La Grande on Highway 203. The site was recommended because visitors would have easy access to it off Interstate 84, Metlen said.

The state bikeway selection committee recommended that the starting point be changed to a site with less traffic, Metlen said.

Riverside Park then was chosen as the starting and ending point.

Metlen noted that before an application can be approved, permission must be obtained from the jurisdictions the route would pass through, including the towns and counties.

Preliminary approval from the jurisdictions was received earlier and now formal OKs must be obtained.

An Oregon Scenic Bikeway is a signed bike route on roads and bicycle paths. The route can be straight one of more than 40 miles or a loop route more than five miles in length.

Presently there is just one Oregon Scenic Bikeway. It is the 132-mile Willamette Valley Scenic Bikeway. It already existed and was incorporated into the Scenic Bikeways System.

One of the intents of the program, according to the Oregon State Parks and Recreation Department website, is to create a set of routes that will be identified as the best in Oregon and attract domestic and international tourism dollars.

The State Parks and Recreation Department's Scenic Bikeways Program was created via a partnership between the Oregon Parks and Recreation Department, Travel Oregon, the Oregon Department of Transportation and Cycle Oregon.



[print this](#)



[rss feed](#)



[subscribe](#)

Strengthen local business climate

Written by [Bill Rautenstrauch, The Observer](#) February 04, 2011 09:33 am

State Rep. Greg Smith was on hand at Primo's Pizza Jan. 26 as the Grande Ronde Alliance for Business, or GRAB, a new group dedicated to improving the local business climate, met for a first time.

Some 36 people, including business owners, community leaders and officials, listened as Smith, who is a small business owner and also the head of the Eastern Oregon University Small Business Development Center, weighed in on current conditions and offered some suggestions for the future.

Smith started by saying Union County's economy continues to struggle even though the recession is said to be on the wane. Though there's been some improvement, credit is still tight at local banks and business activity is sluggish.

"We've got an issue in Union County we've got to get our arms around," Smith said. "I don't have a silver bullet, but I'm willing to work with you. It's time to come together. We're hurting out here."

Smith spent some time detailing his thoughts on what might be done to improve the situation. For one thing, he said he thinks it's important for people involved in economic development to take a regional view.

"We need to lock arms with Wallowa County, Baker and Grant County, too. If we're helping them, they're helping us. We can't be too isolationist," he said.

While traditional efforts to recruit, retain and expand businesses should continue, Smith also said it might help for people involved in economic development to think outside the box.

He told about people in Spray who got together to create a brand of vodka, and also how the city of Condon, which had no plumber, helped an unemployed man train in the trade and start a plumbing business.

"Beyond recruiting, what if we sat down, identified a niche and started a business?" Smith said.

Smith also said he thinks agencies and governments should form strong partnerships aimed at helping people who want to start or expand a business. Economic development efforts should be better coordinated than they currently are.

"There should be a one-stop shop instead of sending people off in 13 different directions," he said.

Smith said the Small Business Development Center he directs offers entrepreneurs free and confidential advice and technical help and is a resource that shouldn't be overlooked. He said the center is a successful operation that leads centers across the nation in capital formation.

Smith also said it is important for people to watch developments in the state Capitol, and stay involved in the political process.


"We have to look at public policies coming out of Salem. As a group we need to talk about what can happen in Salem to get things turned around," he said.

In discussion following Smith's comments, Chris Haefer, one of the organizers of the new group, said he thinks a concerted, organized effort by business people and community leaders will help bring about change.

"If we have no direction and no unity, we have nothing," Haefer said.

Other people attending the meeting stood up to talk about ideas or projects currently under way that show promise.

Local businessman Mace Cadwell said he thinks a new bowling alley to replace The Rock Fun Center that went out of business a couple of years ago is something worth pursuing.

Valerie Franklin said she thinks the effort to start a USDA slaughterhouse in the Grande Ronde Valley is worthy of support.  Jerry Hector of the Union County Chamber of Commerce said establishment of scenic bikeways in the valley show promise for attracting visitors.

Haefer said this week he thinks the large turnout for GRAB's initial meeting shows that people are concerned about current economic conditions and want to take action.

"I thought it was great. Thirty-six people showed up," Haefer said. "I'm hearing from a lot of people now that they want to see more industry. I'm seeing a lot of different people and groups come together."

The next Grande Ronde Alliance for Business meeting begins at 6:30 p.m. Wednesday in the conference room of Island City's City Hall.

Phil Scheuers from Smith's office will be a keynote speaker, discussing mobile media as it applies to business.

"We'll also be answering questions, talking about the direction of GRAB and more," Haefer said.

For more information, contact Haefer at 541-910-6222.



print this



rss feed



subscribe

A Grande adventure

Written by Jeff Petersen, The Observer May 05, 2011 09:25 am

If crows had as much difficulty sticking landings in trees as young “gymnasts” do sticking landings in the typical Northeast Oregon living room, this world would be a more interesting place.

Such thoughts crowd a cabin-feverish mind. It’s May. Where’s spring? When do we get to begin the Yard-Work Workout? Why are we still mowing mud?

I look out the window expecting spring to arrive, like some friend that is expected to show at any moment, day after storm-wracked day, week after storm-tossed week.

So far, nothing.

Oh, there have been false starts. Sunday and Tuesday were hints of things to come ... in July.

Every other day in May is wonderful.

On these first days of true spring, the sun is out in full force. The blustering wind that is such a force through the winter and early spring takes the day off, probably suffering from a repetitive stress injury.

On Sunday I was in a group of bicyclists making its way from Baker City to La Grande on the The Grande Tour Scenic Bikeway. The bicycle loop is part of a series of scenic rides through Oregon.

Of course, the “group of bicyclists” had long since passed Catherine Creek State Park and was cruising into Union. I was sweating, miles and miles back, up the 12 percent grade north of Medical Springs.

The snow was on the run. Snowbanks had little left in their winter savings accounts.

The scent of pine wafted from the forest near the 4,200-foot Catherine Creek summit.

Mountain bluebirds, meanwhile, played tag in the meadows with newly liberated butterflies.

All in all, it was a perfect day for a Navy Seals operation in Pakistan to take down terrorist mastermind Osama bin Laden.

It was also a perfect day for a Gray Seal like me to challenge his fitness — and find a bit of serenity.

The Medical Springs area, for those not familiar, features

3-D topography. It’s big sky country. There, beyond the boondocks, border-collie grins are

more common than Starbucks and Subarus.

Mourning doves call back and forth. Over every rise is a gee-whiz view, to the west of the Elkhorn mountain range and to the east of the snow-painted Wallawas.

The herds of cows have not been replaced by herds of fat cats.

Peace and quiet are becoming hot commodities in today's world, and I can think of no better way to see Oregon's wild and wolfy outback than from a bicycle. Of course, I am in a minority here. The noisy crows told me so.

Reach the author at jpetersen@lagrandeobserver.com.



print this



rss feed



subscribe

Close Window



UNION COUNTY Chamber Times

Home of EASTERN OREGON UNIVERSITY

VOL. 13 NO. 4

Union County Chamber of Commerce

APRIL 2011

Why tourism means economic development

Tourism has long been recognized as a vital cog in the economic development machinery. On the surface, tourism is often viewed as locked in step with Disneyfication, but it is more realistically entrenched in promoting already-existing assets to those who seek them. In fact, tourism plays a noted role in the economic development plans for both the City of La Grande and Union County Economic Development Corp. (UCEDC).

Noting abnormally high unemployment levels in Union County, coupled with manufacturing and retail closures and layoffs, the economic plan for the City of La Grande suggests a tourism marketing strategy that focuses on attracting population growth, retail spending, and business investments. This concept is repeated in the economic development plan created for UCEDC and is incorporated into the Chamber's tourism strategy.

Local retail spending puts dollars back into the local economy. Not only does spending keep the existing retail establishments healthy, it can eventually create additional retail opportunities, particularly with increased visitor demand. Establishments that may drop up as a result of increased visitor traffic are gift

and souvenir retailers, fuel services, lodging providers, and restaurants. Over time and with continued growth, these establishments can cause the development of additional related businesses, such as auto supply and repair, clothing, and wholesale establishments, all the while keeping local contractors and building supply companies engaged.

An essential step in increasing local spending is the development of pass-through visitor services, which is one of the strategies included in the UCEDC economic development plan. Unlike destination travelers, pass-through visitors conduct local business on their way to somewhere else. This market segment impacts fuel providers, restaurants, and sometimes lodging and retail establishments. With Union County being situated along I-84 and Highway 82, capturing the pass-through market can be a year-round effort—and have significant and lasting results. Ideally, pass-through visitors are enchanted by Union County's geographic features and culture, and choose to make Union County a future destination.

Emphasizing the importance of tourism as part of our county-wide economic development efforts, the Chamber

hosted a community workshop by Altitude Essentials, which focused on leveraging tourism for economic development. Drilling down, Union County's tourism assets are remarkable and many.

The Chamber's working tourism development plan dovetails into its efforts for local economic development, which is devised to work in harmony with La Grande's and UCEDC's plans.

Chamber to relocate to Phoenix Building on Depot Street

The Union County Chamber of Commerce and Visitor Information Center is relocating to its new office at 207 Depot St. during mid-April.

The newly remodeled 1,400 square-foot space will capture the architectural influences of downtown La Grande and provide a positive first impression for visitors, as well as meeting the needs of the Chamber's strategic development plan.

"We'll be gaining a much-needed conference room and a more efficient workspace," says Judy Hector, executive director. The location amenities will present a professional, cohesive environment for visitors and businesses seeking to locate in Union County, and includes some technological advantages that will enable the

Chamber "to relay a positive Union County message," Judy says.

Still centrally located in the La Grande historic district, the Chamber will be strategically located for visits from tourists, businesses, and potential residents. The space includes a recessed exterior space, which will house an electronic information screen featuring information about local events and activities, as well as paid advertising. (Businesses interested in sponsoring the project should contact the Chamber at 541.963.8588.)

The move is being planned to avoid an interruption in services. "We ask for your patience while we get everything set back in order," Judy says.

City Beat

La Grande Main Street 5k Stroll and 10k Run

Board of Directors

OFFICERS

President: Ryan Hildebrandt – Sterling Savings Bank
 Past President: Brent Gunderson – Seydel Lewis Poe
 Moeller & Gunderson
 President Elect: Randy King – Community Bank
 Vice President: Matt Scarfo – Benchwarmers/Longbranch
 Treasurer: James Gorham – Mountain Valley Therapy
 Kevin Loveland - Loveland Funeral Chapel & Crematory
 John Howard – John J. Howard & Assoc.
 Gary Anger – Edward Jones Investments
 Kyle Evans – Wheatland Insurance
 Tracy Little – Capps Broadcast Group
 Bob Salstrand – Boise Cascade
 Dave Wildman – Anderson Perry & Assoc.
 Charles H. Gillis – Attorney at Law

EX-OFFICIO BOARD MEMBERS, OFFICIAL REPRESENTATIVE

Dan Pokorney, Robert Strobe - City of La Grande
 Tim Seydel - Eastern Oregon University
 Mardi Ford - Grande Ronde Hospital
 Dale DeLong - City of Island City
 Mark Davidson - Union County
 Dan Stark - UCEDC

We're always in need of volunteers. Call (541) 963-8588
 and let us know how you'd like to help.

E-Mail - director@unioncountychamber.org
 Web Page - www.unioncountychamber.org

CHAMBER STAFF

Executive Director: Judy Hector
 Office Assistant: Rona Lindsey
 Marketing Assistant: Wayne Callahan

Mt. Emily Safe Center benefit ride debuts Grande Tour bikeway

The annual Celebrate Spring Benefit bicycle ride is scheduled for April 30 and May 1. Proceeds will benefit the Mt. Emily Safe Center for Children. The ride, beginning and ending at Riverside Park, will debut the Grande Tour Scenic Bikeway, a project that will mark some of Union and Baker counties' most scenic roads as bicycle-friendly. Once approved by the Oregon State Parks Dept., the tour will become part of the Oregon State Parks Scenic Bikeways system, drawing cyclists to Eastern Oregon.

The route passes through La Grande, Union, North Powder, Baker City and back by way of Ponderosa, Union and Cove. This will be a two day event with short, family-oriented rides, and longer rides of up to 40 mile rides, on Sat. April 30, and a two day ride to introduce cyclists to the entire Grande Tour Scenic Bikeway, a ride of approximately 160 miles.

For additional information, contact Anita Metlen at 541.963.3220.

ArtsEast plans plein aire art project

ArtEast in La Grande is seeking artists to participate in a "plein aire" art project to be held in conjunction with the Ladd Marsh

Birdathon on May 13 – 15.

Artists are asked to commitment three hours between 6:00 a.m. and noon on May 14. Each participant will be stationed at a Ladd Marsh site along with a bird expert who will have a sited telescope and information about activities occurring in the area. Artists should be willing to allow visitors to view their work and discuss the process with them.

Participating artists will be featured in an exhibit at the ArtsEast Gallery June 3 – 24.

For additional information or to apply, contact ArtsEast executive director Deena Heath at 541.962.3624 or email dheath@eou.edu.

Build trust when handling consumer complaints

Consumer complaints are not necessarily an indication of bad business practices; sometimes, it's just part of doing business. Therefore, it is important for all businesses to know how to effectively resolve consumer disputes.

Better Business Bureau serving Alaska, Oregon, and Western Washington serves as a neutral, third party helping businesses and consumers reach a satisfactory resolution in their marketplace disagreements.

plaint issue. Be thorough. A structured response may include the following: An explanation of your standard business practices, your policy and procedures, a list of events that took place or testimony from employees.

Provide supporting documents. Contracts, invoices, bids, estimates, receipts, pictures, brochures or marketing collateral, and e-mail correspondence may help communicate your point.

nity to prove that your business is responsible and responsive to customers.

Always respond in a timely manner. BBB's goal is to help businesses resolve customer complaints in a fair, fast and equitable manner. Don't wait until it's too late and the consumer has blasphemed the business name in the community, or worse, the Internet.

Be proactive. Explore success strategies

June 8, 2011

RE: Public meeting for the Grande Tour Scenic Bikeway

Public review of the Grande Tour Scenic Bikeway was held at the Cook Memorial Library La Grande Oregon. Notice for this event was printed in the Briefly section of the La Grande Observer newspaper, Monday, June 6, 2011, issue 111, page 2.

Attendees: Joe Kresse, Duane Christman, Vernita Ediger, Mark Karl, Kim Metlen, Mike McInnis, Heather Stanhope.

The route map was displayed and Grand Tour Scenic Bikeway brochures available. A brief discussion was presented by Kim Metlen about the route and amenities found along the way.

Discussion included items riders might like as mementos for completing the ride.

Brochures were distributed.

Comments:

Joe Kresse, "Are we done yet?"

Vernita Ediger liked the merit badge idea for route souvenirs.

Heather Stanhope, "Go for it!p."

Note submitted by Kim Metlen, compiled by Anita Metlen 6/13/11