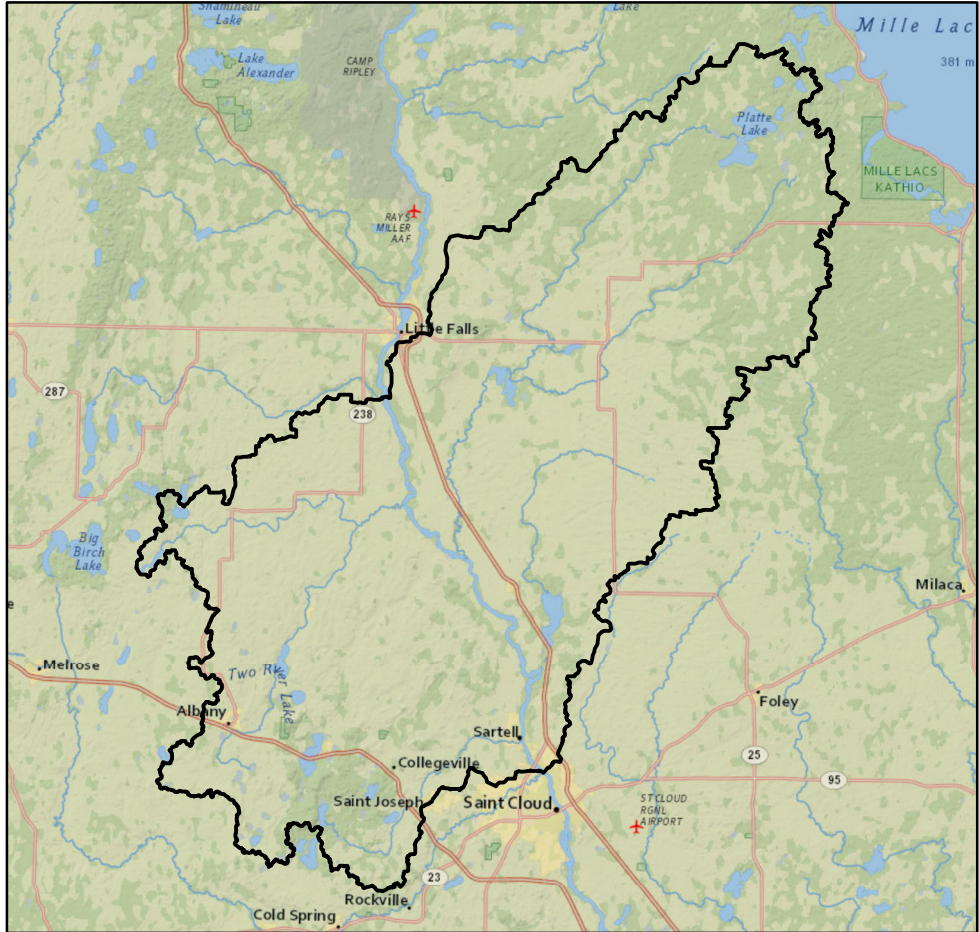




Watershed Report Card: Miss R - Sartell



People and Places:

Watershed Population:

2000 census - 57,663
 2010 census - 68,089

Largest Cities - Population:

Sartell - 13,630
 Saint Joseph - 6,534
 Watab - 3,093
 Albany - 2,561
 Saint Wendel - 2,150

Counties - % of watershed:

Morrison - 55 %
 Stearns - 31 %
 Benton - 10 %
 Crow Wing - 4 %
 Todd - 0 %
 Mille Lacs - 0 %

Watershed Area:

Watershed size:

656,115 acres
 1,025 square miles

Watershed Surface Area:

Percent Land - 97 %
 Percent Water - 3 %

HUC8 ID:

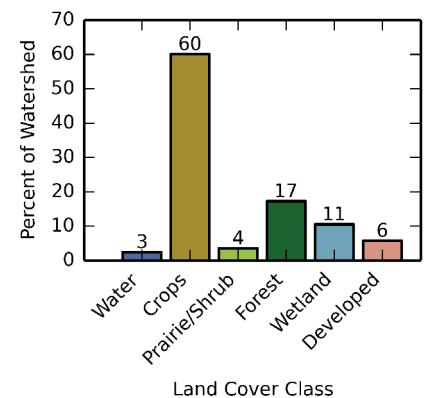
07010201

Basin Name:

Mississippi Headwaters (0701)

Land Use:

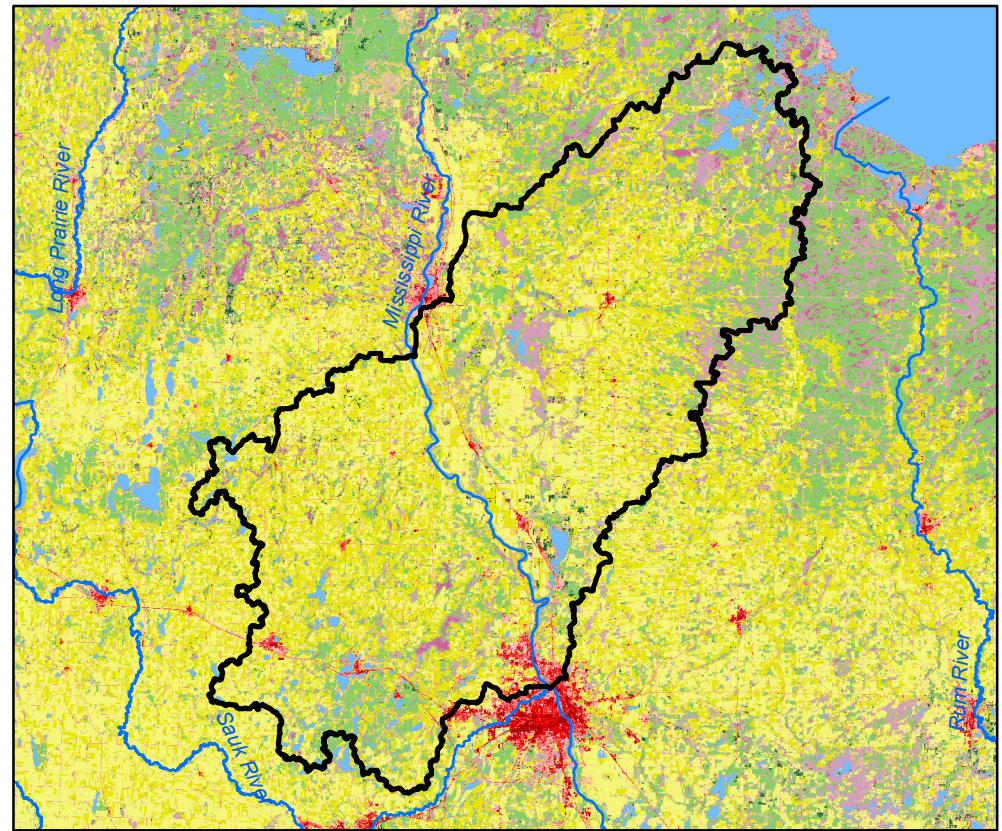
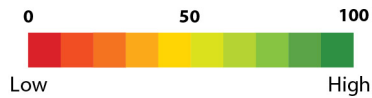
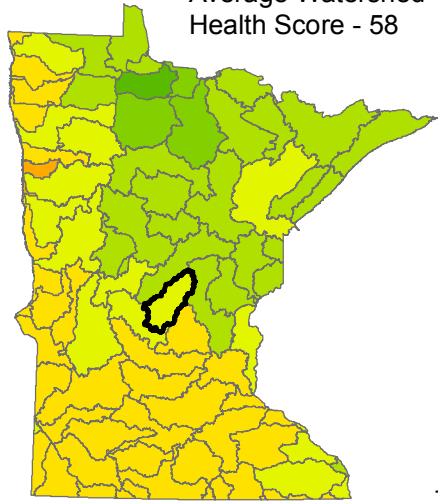
Percent of watershed area by land cover type:



Watershed Health Report - Major Watershed

Miss R - Sartell

Average Watershed Health Score - 58



These health scores are calculated at the Major Watershed (HUC8) scale. Health score names followed by (*) are also calculated at the DNR Catchment scale (subdivided HUC12). Those results are reported on the following pages.



Hydrology

Component Health Score (index average) 78

Index Scores

Perennial Cover*	65
Impervious Cover*	63
Water Withdrawal*	97
Flow Variability	71
Hydrologic Storage	77
Sub-Scores	
Altered Streams*	72
Surface Storage	81



Geomorphology

Component Health Score (index average) 69

Index Scores

Soil Erosion Potential*	76
Groundwater Susceptibility	35
Climate Vulnerability	97



Biology

Component Health Score (index average) 46

Index Scores

Terrestrial Habitat Quality*	8
Stream Species Quality*	79
Species Richness	61
At-Risk Species Richness	37



Connectivity

Component Health Score (index average) 35

Index Scores

Terrestrial Habitat Connectivity	11
Aquatic Connectivity*	42
Riparian Connectivity*	77



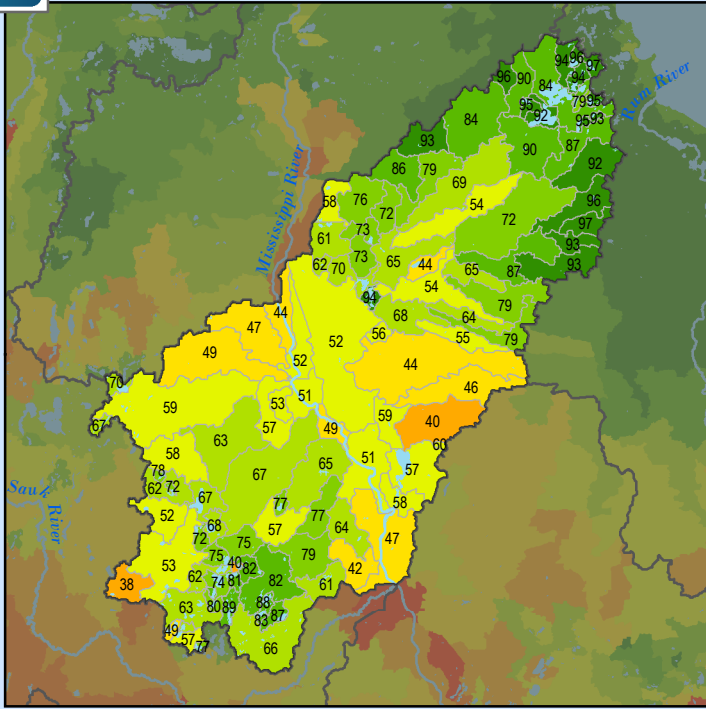
Water Quality

Component Health Score (index average) 63

Index Scores

Non-Point Pollution Sources	47
Sub-Score	
Phosphorus Risk*	51
Localized Pollution Sources*	78
Assessments	58

Perennial Cover (2011)



Health Score Distributions:

Miss R - Sartell

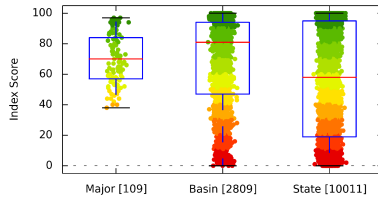
Min: 38

Max: 97

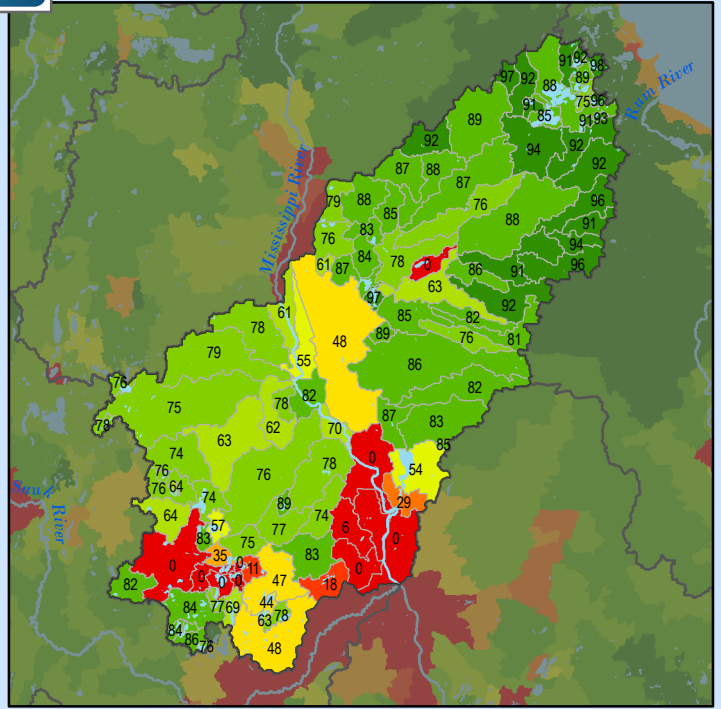
Median: 70.0

Mean: 70.39

Standard Dev: 16.36



Impervious Cover (2011)



Health Score Distributions:

Miss R - Sartell

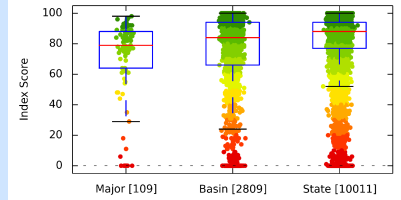
Min: 0

Max: 98

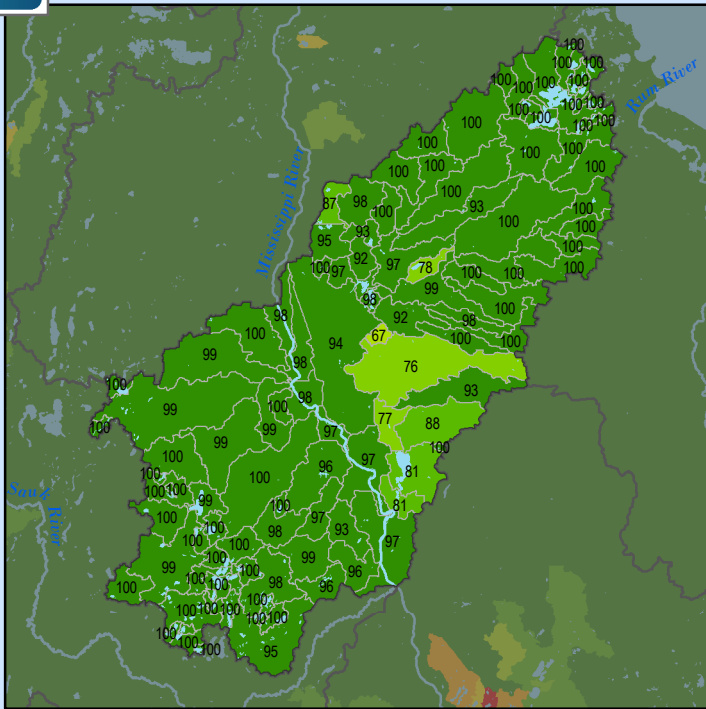
Median: 79.0

Mean: 70.45

Standard Dev: 27.18



Water Withdrawal Index



Health Score Distributions:

Miss R - Sartell

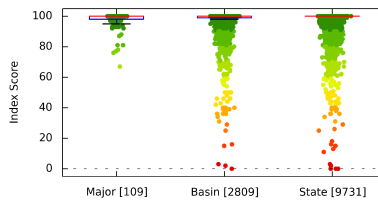
Min: 67

Max: 100

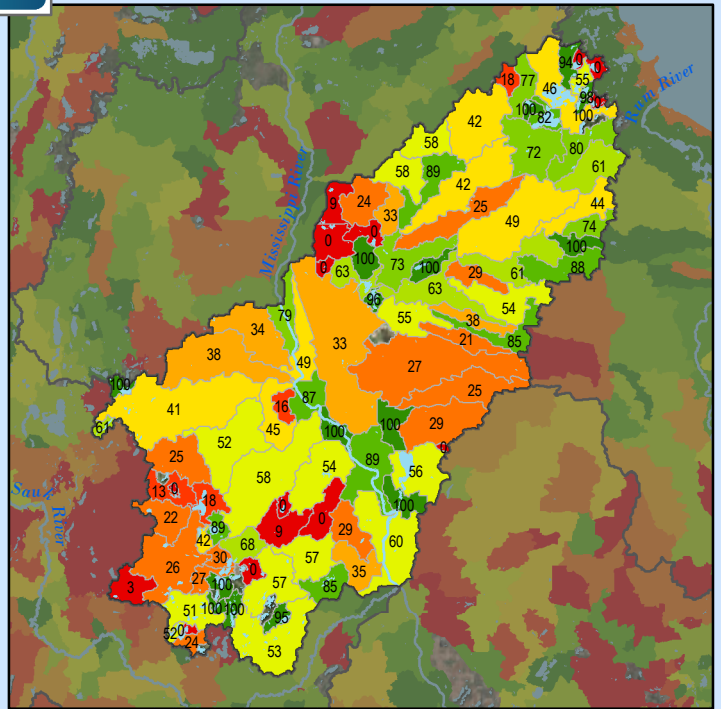
Median: 100.0

Mean: 97.44

Standard Dev: 5.71



Altered Streams



Health Score Distributions:

Miss R - Sartell

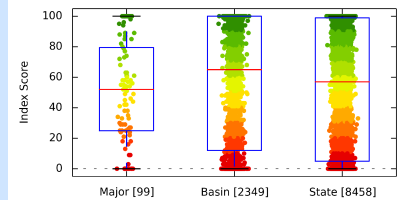
Min: 0

Max: 100

Median: 52.0

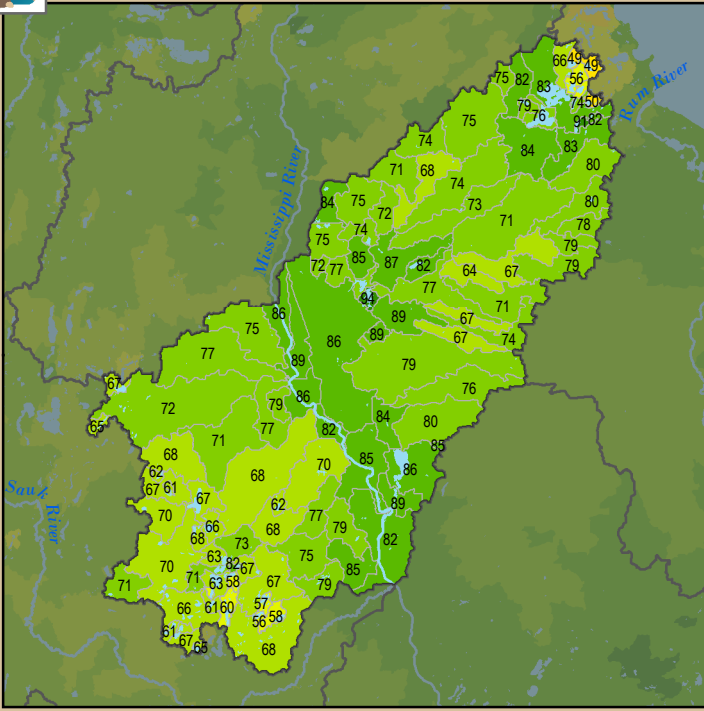
Mean: 50.49

Standard Dev: 32.55



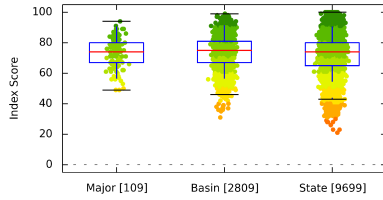


Soil Erosion Potential

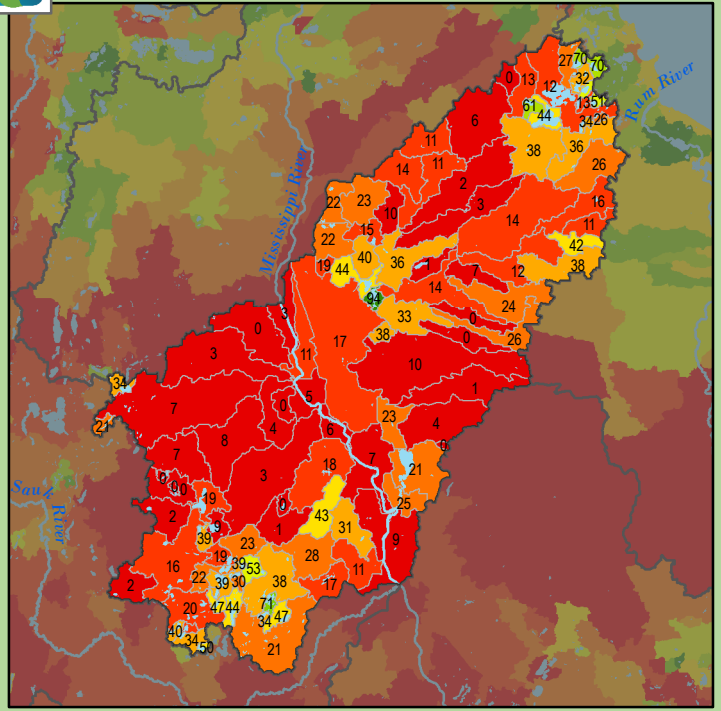


Health Score Distributions:

Miss R - Sartell
Min: 49
Max: 94
Median: 74.0
Mean: 72.93
Standard Dev: 9.83

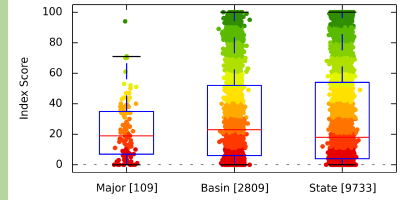


Terrestrial Habitat Quality

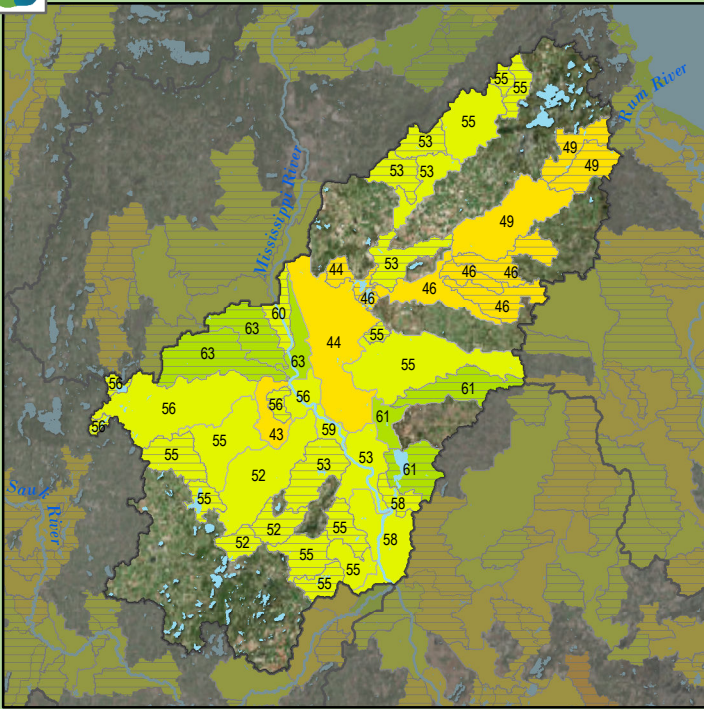


Health Score Distributions:

Miss R - Sartell
Min: 0
Max: 94
Median: 19.0
Mean: 22.39
Standard Dev: 18.74

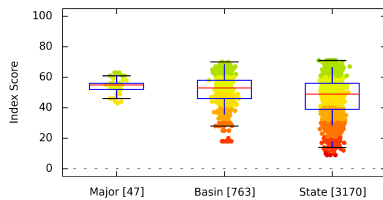


Stream Species Quality - Mussel Score

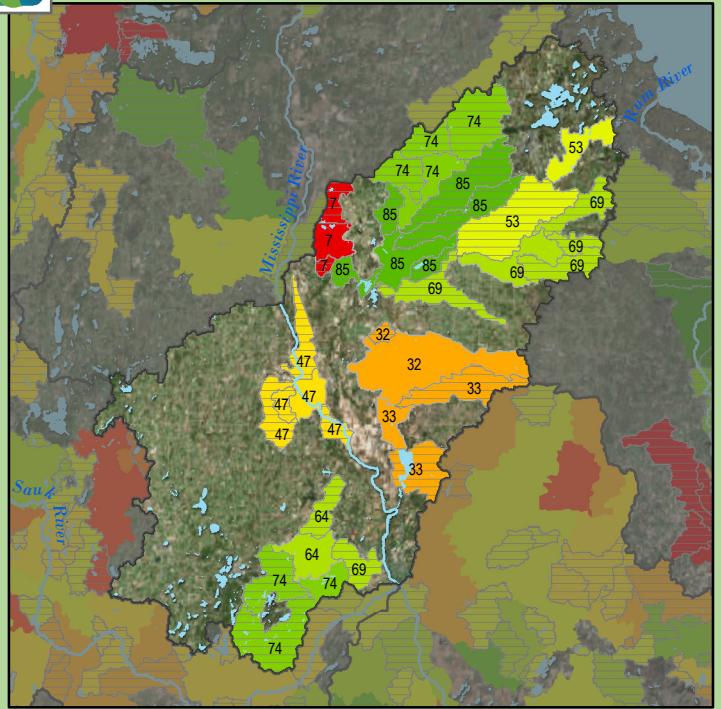


Health Score Distributions:

Miss R - Sartell
Min: 43
Max: 63
Median: 55.0
Mean: 53.81
Standard Dev: 5.15

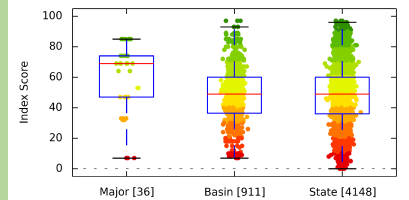


Stream Species Quality - Aquatic Invertebrate IBI



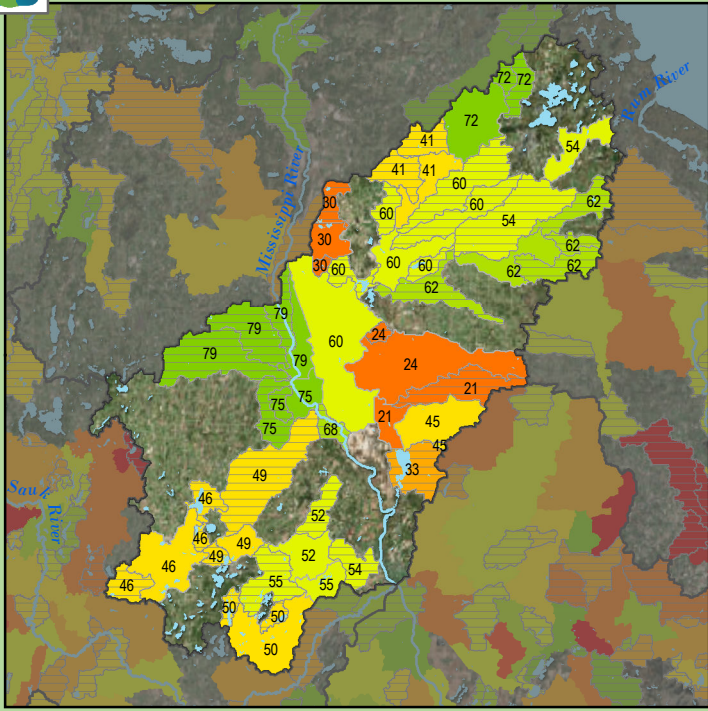
Health Score Distributions:

Miss R - Sartell
Min: 7
Max: 85
Median: 69.0
Mean: 58.19
Standard Dev: 22.76



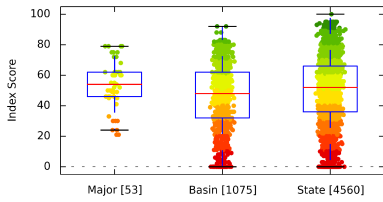


Stream Species Quality - Fish IBI

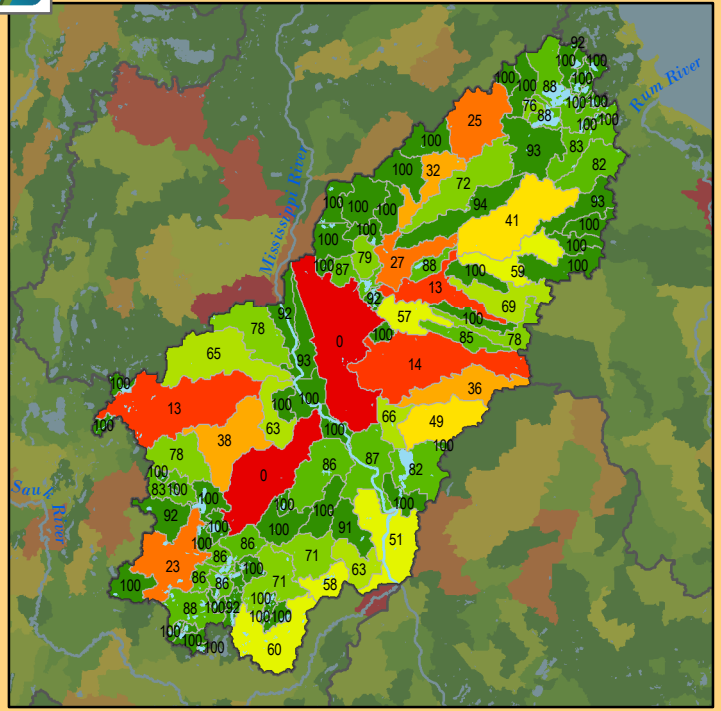


Health Score Distributions:

Miss R - Sartell
Min: 21
Max: 79
Median: 54.0
Mean: 53.55
Standard Dev: 15.51

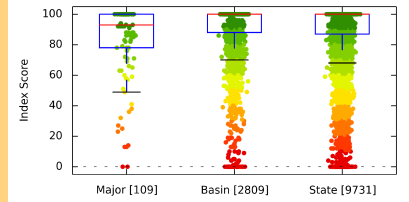


Aquatic Connectivity

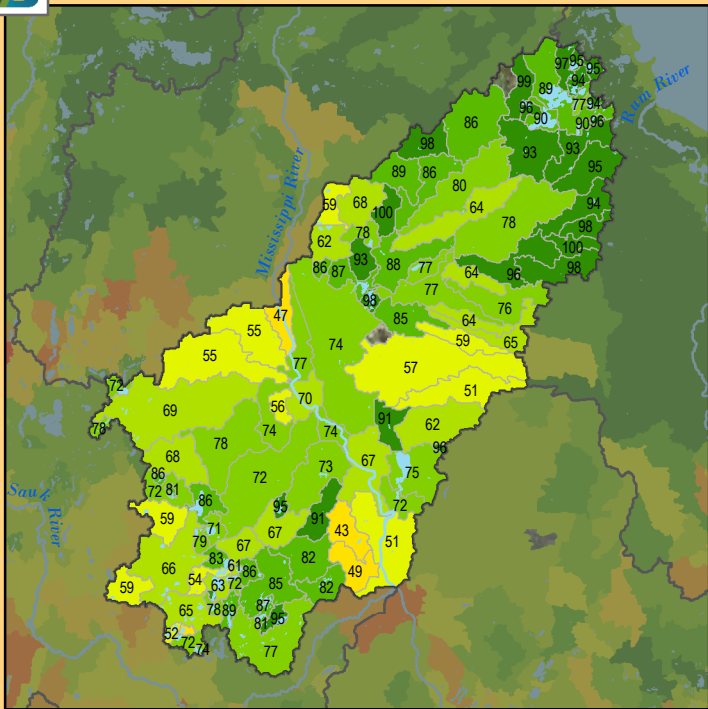


Health Score Distributions:

Miss R - Sartell
Min: 0
Max: 100
Median: 93.0
Mean: 82.75
Standard Dev: 25.32

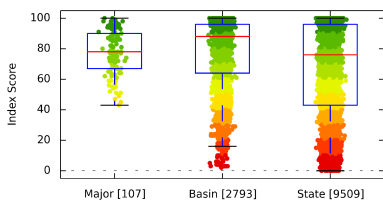


Riparian Connectivity

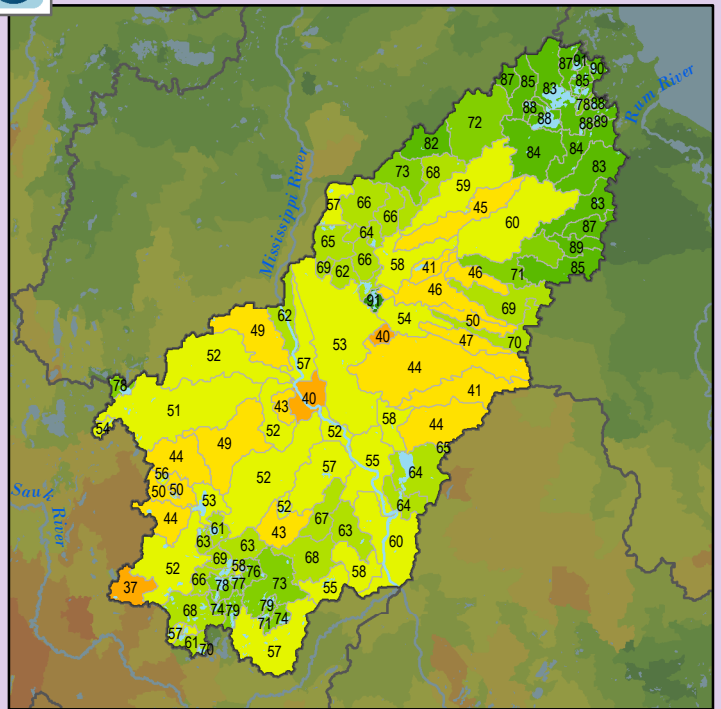


Health Score Distributions:

Miss R - Sartell
Min: 43
Max: 100
Median: 78.0
Mean: 77.5
Standard Dev: 14.68

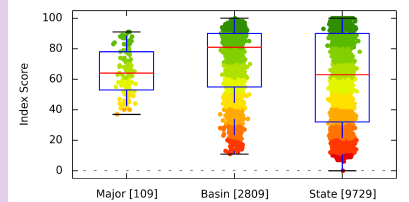


Non-Point Source - Phosphorus Risk



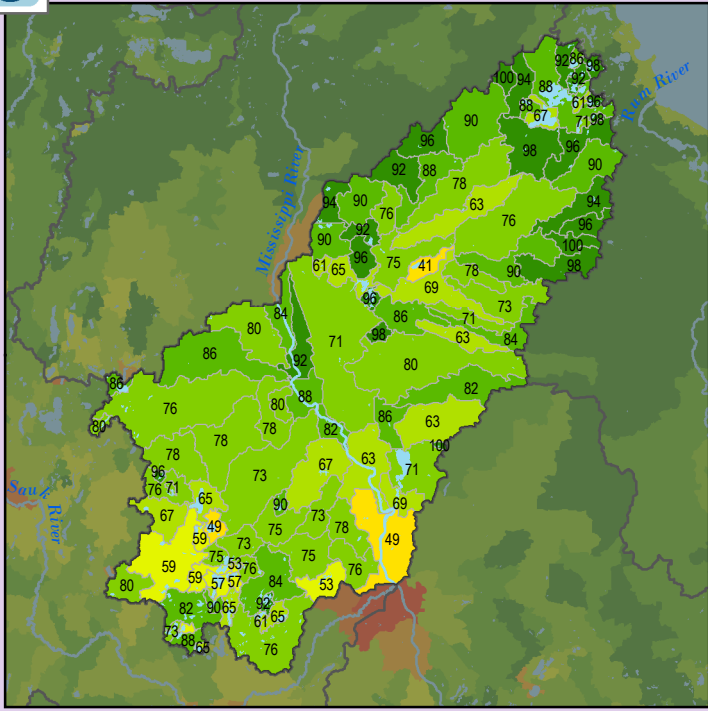
Health Score Distributions:

Miss R - Sartell
Min: 37
Max: 91
Median: 64.0
Mean: 64.79
Standard Dev: 14.71



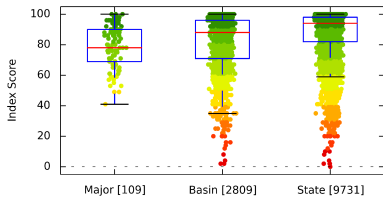


Localized Pollution Sources

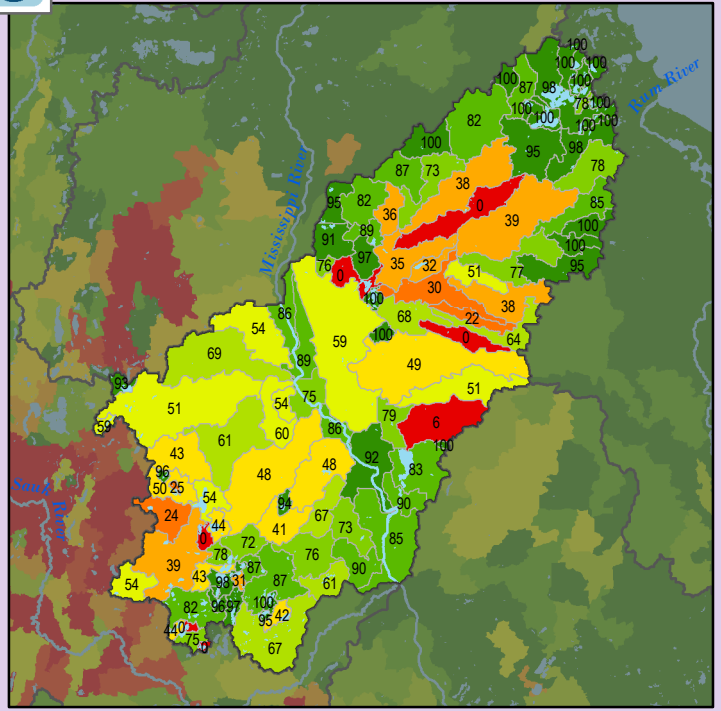


Health Score Distributions:

Miss R - Sartell
 Min: 41
 Max: 100
 Median: 78.0
 Mean: 78.54
 Standard Dev: 13.64

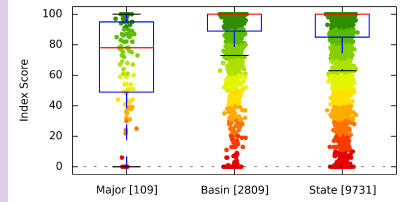


Localized Pollution Sources - Animal Units

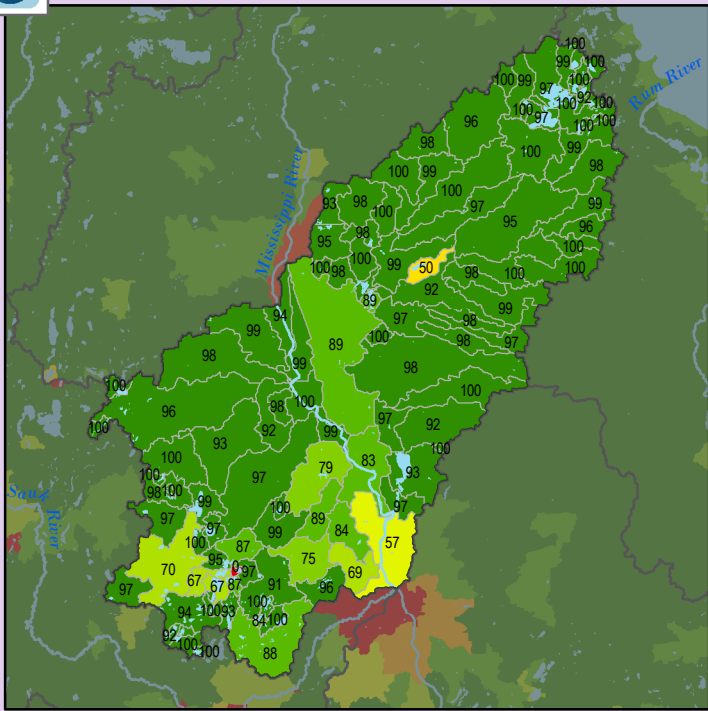


Health Score Distributions:

Miss R - Sartell
 Min: 0
 Max: 100
 Median: 78.0
 Mean: 69.43
 Standard Dev: 29.07

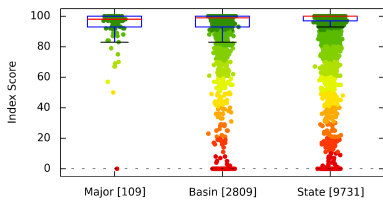


Localized Pollution Sources - Potential Contaminants

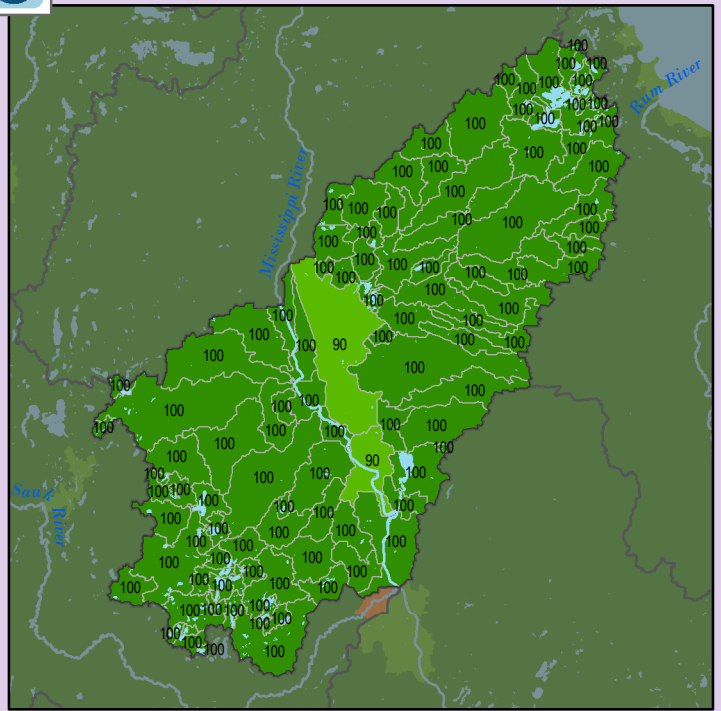


Health Score Distributions:

Miss R - Sartell
 Min: 0
 Max: 100
 Median: 98.0
 Mean: 93.78
 Standard Dev: 12.8

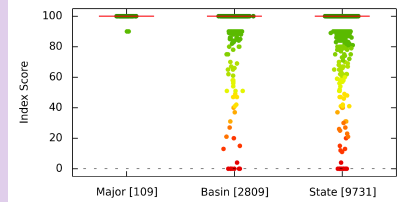


Localized Pollution Sources - Superfund Sites



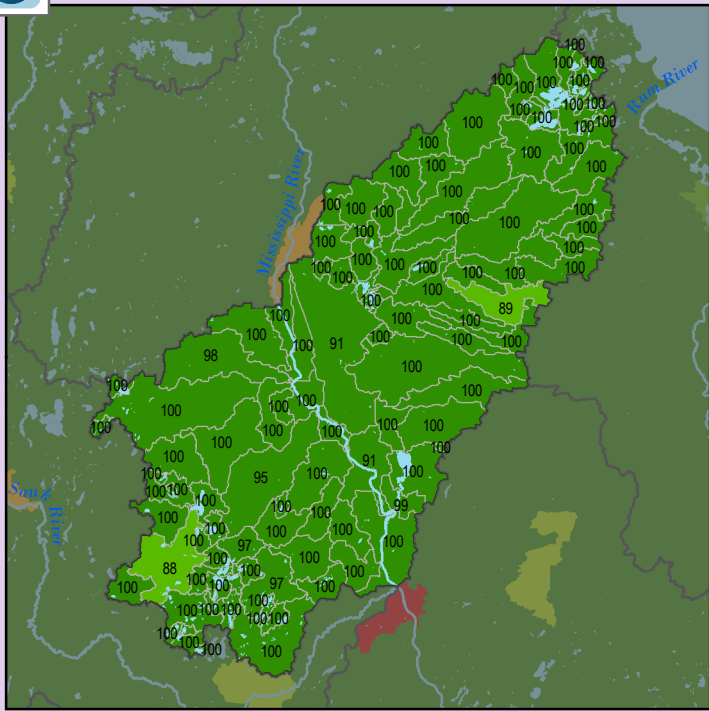
Health Score Distributions:

Miss R - Sartell
 Min: 90
 Max: 100
 Median: 100.0
 Mean: 99.82
 Standard Dev: 1.34



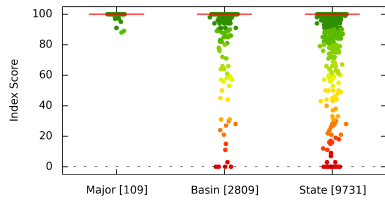


Localized Pollution Sources - Wastewater Treatment

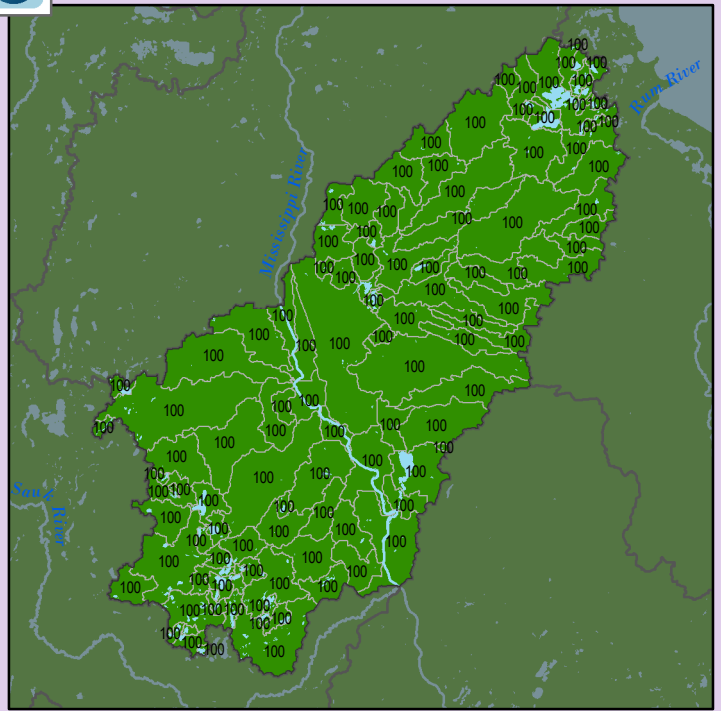


Health Score Distributions:

Miss R - Sartell
Min: 88
Max: 100
Median: 100.0
Mean: 99.5
Standard Dev: 2.03

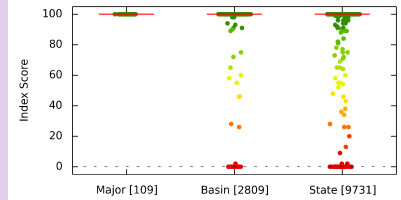


Localized Pollution Sources - Open Pit Mines

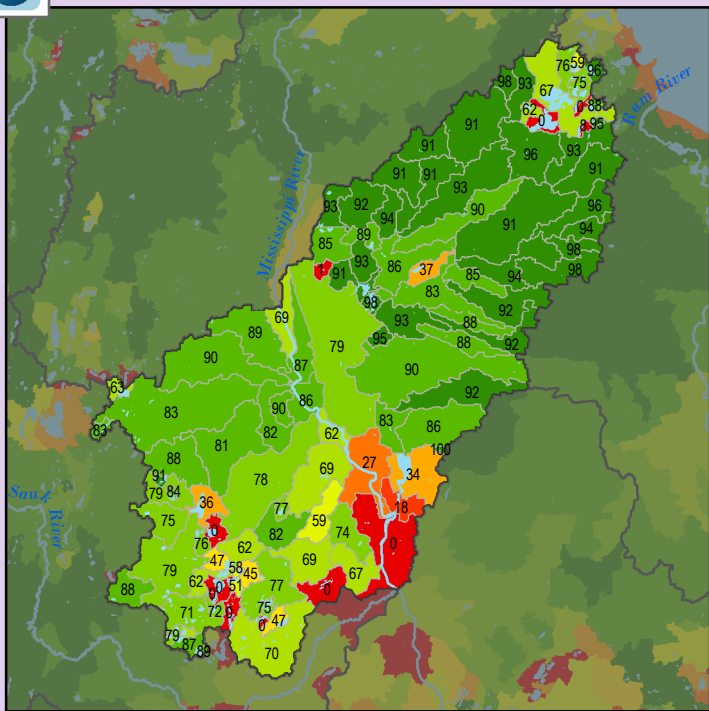


Health Score Distributions:

Miss R - Sartell
Min: 100
Max: 100
Median: 100.0
Mean: 100.0
Standard Dev: 0.0



Localized Pollution Sources - Septic Systems



Health Score Distributions:

Miss R - Sartell
Min: 0
Max: 100
Median: 83.0
Mean: 71.28
Standard Dev: 28.61

